

CENTRAL INTERCEPTOR BULLETIN

Lyon Avenue site, Roy Clements Treeway, Mount Albert

We're building the Central Interceptor, a super-sized wastewater tunnel to reduce overflows, creating a better environment for you to enjoy.

Site update

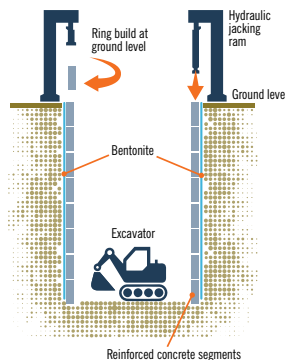
The Lyon Avenue construction site has been a hive of activity in the last year. The team completed site establishment and has now started excavating the shaft. This shaft site is one of ten along the main route for the new Central Interceptor Wastewater tunnel. The Lyon Avenue shaft will be 47 metres deep. The focus is now on completing the caisson shaft excavation in preparation for the arrival of the Tunnel Boring Machine (TBM), Hiwa-i-te-Rangi, in 2024.

What's next: Caisson shaft excavation

Lyon Avenue construction site is one of two sites on the Central Interceptor project that is using caisson shaft excavation. We use this method of excavation when the below-ground conditions are more inconsistent.

The caisson concrete sections are poured in-situ in two-metre-deep rings at surface level. This is done by first building up two metres of steel reinforcements around the shaft, then pouring concrete around the steel to create the next section of the shaft. Then it is pushed into the ground using a combination of excavation inside the shaft and jacking pressure from the hydraulic rams above ground.

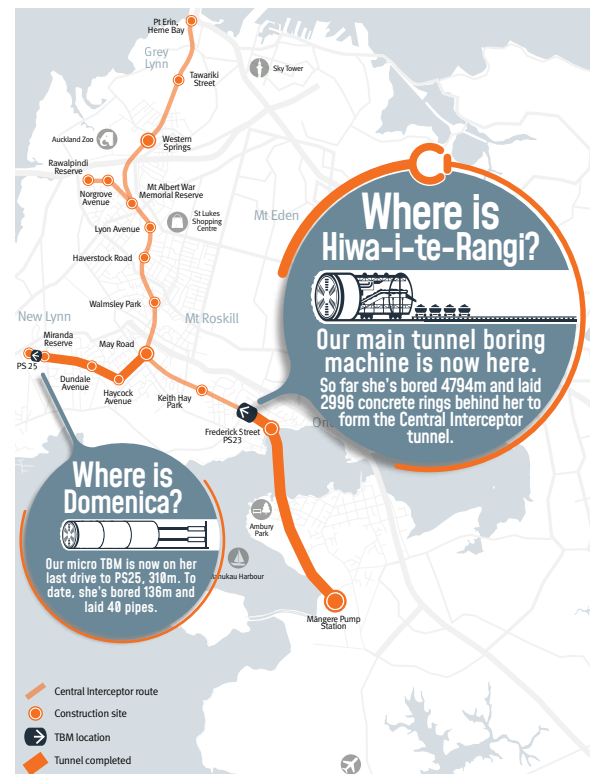
We use bentonite on the outside of the rings as lubrication to help push the concrete sections into the ground and it also helps support the earth walls. Once the shaft excavation is complete, we will replace the bentonite with grout to fix the shaft in place.



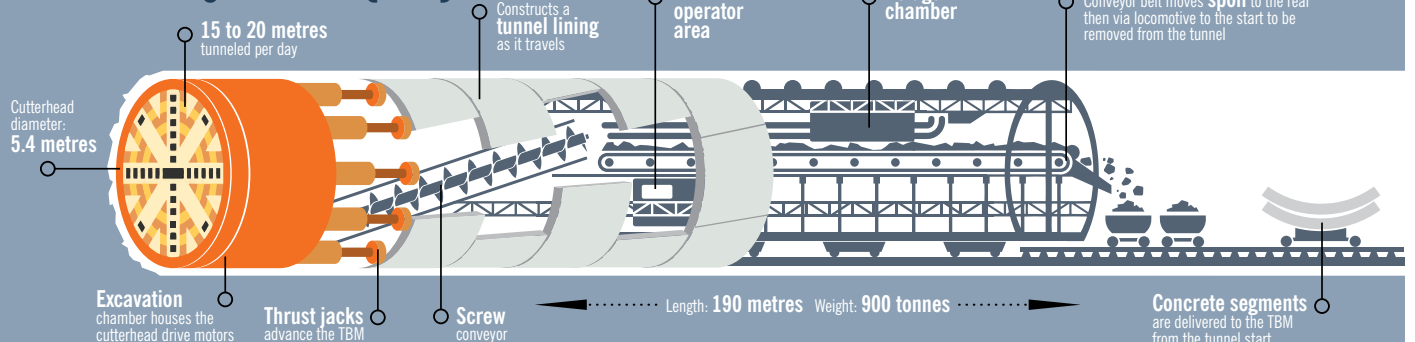
Tunnel progress

Check out our website which now has a weekly update of the TBM's progress. <https://www.watercare.co.nz/Central-interceptor/Constructing-the-Central-Interceptor>.

You can also follow us on Facebook, or Instagram.



Tunnel Boring Machine (TBM)





Increased truck movements

As our team continues to excavate the shaft, you may notice an increase in the number of trucks going in and out of the construction site on Morning Star Place. We produce a large amount of spoil during excavation and this needs to be transported offsite. Our traffic management team is always onsite to ensure the safety of pedestrians and other vehicles.



Lyon Avenue Dawn Blessing

Before we start excavating our shaft and taking our workers underground, we traditionally hold a private dawn blessing ceremony. This is to recognise the disruptions to the earth and those working below it, focusing on the people, their safety and our connections to the land. These blessings are carried out by our Kaitiaki Māori representative who acts as a carer and guardian of the land and our people. It is important on the Central Interceptor Project that we honour Māori beliefs and tikanga.

Working with our neighbours

We have teamed up with Mount Albert Grammar School (MAGS) to display student artwork along our site hoardings. You can check out the student's beautiful artwork along the Roy Clements Treeway next to the Lyon Avenue Construction site. Thank you to our neighbour MAGS for collaborating with us.

Any questions?

For up to date information please see our website:

 www.centralinterceptor.co.nz

You can also email us at:

 ciproject@gajv.com

Or phone:

 **0800 GAJV 02 (0800425802)**

Follow us:

 [@gajv_nz](https://www.instagram.com/gajv_nz)

 [@GAJV](https://www.linkedin.com/company/gajv)



We encourage you to receive these updates electronically - send us your email, your current mailing address and quote "Sign me up: Lyon site bulletin" to ciproject@water.co.nz

Our people

The Central Interceptor project stretches across 16 sites from Māngere to Grey Lynn. Each of these has a team of people working there on various activities and construction stages. We work with incredible people with different skills, backgrounds, experiences and qualifications. In this regular feature, we're going to find out more about some of them. A great way to get to know your neighbours.

Name: Tomas Meloni

Position: Site Engineer

Background: I am from Yerba Buena, Tucuman (Argentina). I studied civil engineering at the National University of Tucuman. I completed my masters in structural engineering at the University of Salerno in Italy. I also studied for a year in Germany doing courses on project management.



I was drawn to engineering as I was always curious about how structures are designed and constructed. I believe that infrastructure projects always have a noble purpose to benefit the people that will utilise them.

Most memorable work moment: A memorable moment for me would have to be when we were doing the shotcrete for the collar beam (shotcrete is spray concrete and the collar beam is a concrete base around the shaft at the surface). It was a Friday morning and everything that could possibly go wrong, went wrong.

The pump wasn't working properly which meant we had to keep stopping to clean the hoses. The generator then wasn't working which meant the concrete had time to harden while we fixed it. This day was memorable because although many things went wrong, the team still managed to pull together to complete the job.

Outside of work: I like playing the guitar, singing, hanging out with friends, playing football and swimming. I also enjoy travelling. I plan to start exploring New Zealand this year as there is so much to see!