

CENTRAL INTERCEPTOR BULLETIN

Dundale Avenue site

Road berm, 68-78 Dundale Avenue, Blockhouse Bay

We're building the Central Interceptor, a super-sized wastewater tunnel to reduce overflows, creating a better environment for you to enjoy.

About the Dundale Avenue construction site

The Dundale Avenue shaft site is one of five sites along a connector tunnel. This tunnel will carry flows from the Western Interceptor into the main Central Interceptor tunnel at the May Road site.

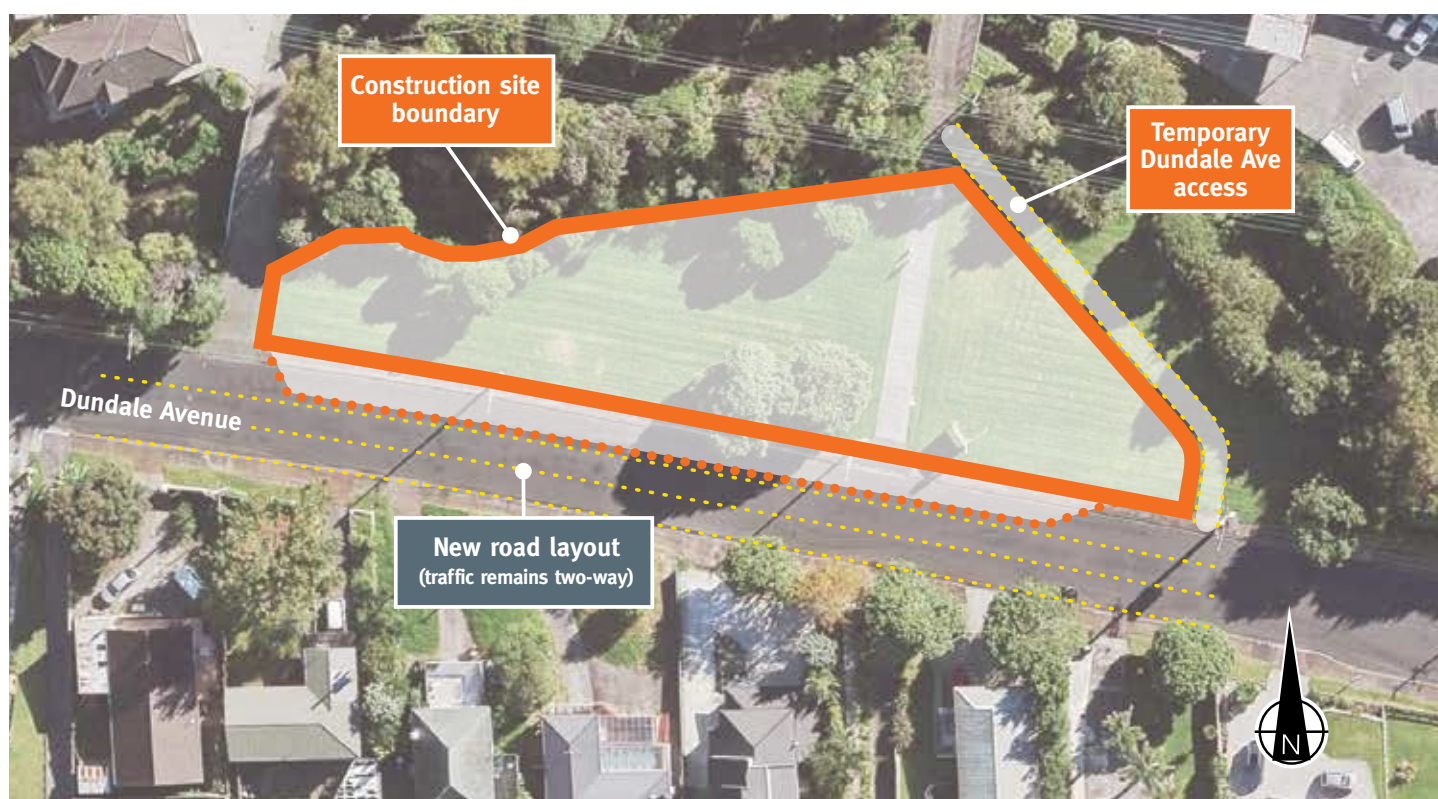
The site is located in the road berm outside 68-78 Dundale Avenue. Construction at this site will involve building a shaft where we will lower a tunnel boring machine (TBM), half the size of the main project machine. At a depth of 22m below ground, this 'micro' TBM will begin tunnelling to our Haycock Avenue and Whitney Street construction sites, creating a tunnel 2.5m in diameter.

What you will notice

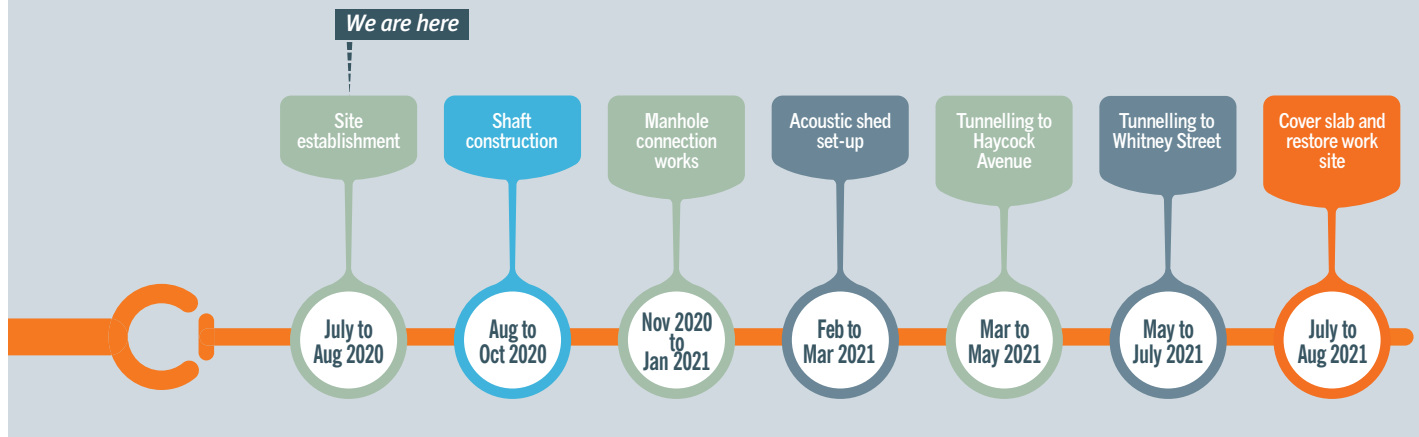
Construction is due to start Monday 20 July and will take approximately 14 months to complete. Initial work will focus on establishing the site such as setting up perimeter fencing, traffic management, temporary site offices and an accessway. Vegetation work will include removing and relocating some trees. Replanting of vegetation will form part of the reinstatement plan, which will take place on completion of the works.

The main construction will include excavating a shaft, lining the shaft and installing an acoustic shed. This shed is needed to contain and reduce the noise made by the micro TBM.

You will notice an increase in the number of trucks in the area. Traffic management will include a reduced speed limit and no parking areas but the road will remain two-way.



Work programme



Working with you

We understand that construction sites for major projects such as the Central Interceptor can be disruptive and noisy at times. We aim to be a good neighbour while we are working in your area and will work to minimise disruption, where we can.

We will keep you informed with what's happening with regular communications. We will be out and about in the neighbourhood during the works to keep in contact about how the work is progressing.

Our contractor will hold a 'Meet the Contractor' community event before work starts (details below).

How will construction affect you?

- General work hours will be between 7am to 6pm, Monday to Friday, and 8am to 6pm on Saturdays. There may be times where unexpected ground conditions or certain activities e.g. critical concrete pours, may require us to work past the general work hours. This will comply with Auckland Council's permit rules.
- Tunnelling operates 24/7 but everything will be contained within the acoustic shed.
- Traffic management will be in place for the safety of motorists, pedestrians, cyclists and workers. Access to driveways will be maintained.
- Parking restrictions will be in place along a section of Dundale Avenue near the site. Signage will be in place to indicate 'no-parking' areas.
- Truck movements will be restricted Monday to Friday during school terms between 8:15am and 9:15am and 2:45pm and 3:15pm.
- Construction projects such as these often generate noise and vibration, which you may experience if you are at home during our work hours. We undertake careful planning and monitoring in accordance with Council requirements. We use noise barriers and fencing to minimise general construction noise wherever possible.

Meet the Contractor

Where: On the road reserve at 76 Dundale Avenue

When: Friday 10 & Saturday 11 July

Time: 10:30am to 12:00pm

We would like to invite you to join us for a free coffee so that you can meet our contractor, Ghella Abergeldie Joint Venture.

This is your opportunity to come and find out more about the project, how we will work with you while we are in your neighbourhood, and discuss the Dundale Avenue construction activities.

Any questions?

For up to date information please see our website:

 www.centralinterceptor.co.nz

You can also email us at:

 ciproject@water.co.nz

Or phone:

 0800 GAJV 02 (0800425802)



We encourage you to receive these updates electronically - send us your email, your current mailing address and quote "Sign me up: Dundale Avenue site bulletin" to ciproject@water.co.nz