

Building the

# CENTRAL INTERCEPTOR

OUR NEWSLETTER - ISSUE 1  
JULY 2019



## Watercare's Central Interceptor is coming!

**You may have heard about the Central Interceptor already. It's a super-sized wastewater tunnel that will reduce overflows, creating a better environment for you to enjoy.**

Over the next six years we're building the Central Interceptor to help make our waterways in central Auckland cleaner. It will run underground from Western Springs, near the Auckland Zoo, to Watercare's Māngere Wastewater Treatment Plant. It will have several link sewers and shafts along the route for collecting and transferring wastewater into the tunnel.

- ✓ reduce overflows
- ✓ reduce risks to public health and the environment
- ✓ provide for population growth

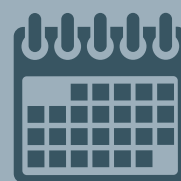
### Why do we need it?

Lots of the pipes in central Auckland are old. Early last century, rain water and sewage would flow into the same pipes and out to sea – there was no such thing as a wastewater treatment plant.

Today, sewage is fully treated except when it rains and then some pipes overflow into our waterways, which isn't nice for you or the environment.

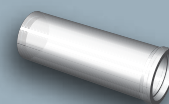
The Central Interceptor is an integral part of Watercare's long-term strategy to effectively manage wastewater within Tāmaki Makaurau, to protect public health and the environment and to provide for growth. While we're building the Central Interceptor, we will also be working on other projects in the western isthmus, such as separating the stormwater and wastewater pipes.

Together, the Central Interceptor and our western isthmus strategy will reduce overflows in the area by up to 80 per cent.

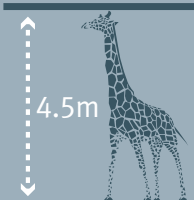


Project  
build  
**2019**  
to  
**2025**

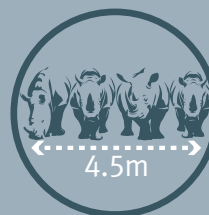
13 kilometres



**longest**  
wastewater  
tunnel in  
NZ



**high**  
enough  
to fit a  
giraffe



**wide**  
enough  
to fit four  
rhino side  
by side



**200,000m<sup>3</sup>**  
**capacity**

so we can store wastewater  
and control the flow rate  
into the treatment plant –  
that's 80 Olympic sized  
swimming pools.

# Our environment

We're reducing overflows to the environment by up to 80 per cent across the western isthmus from Hillsborough to St Marys Bay.

When the Central Interceptor is complete it will significantly reduce the largest existing combined wet-weather overflows in Tāmaki Makaurau, located at Lyon Avenue in Mt Albert and Haverstock Road in Sandringham.

We're providing additional capacity in central Auckland and freeing up capacity in the east and west of the city, which means the city can continue to grow.

# Our neighbourhood

While we're working in the local community we aim to be a good neighbour. Construction activities on a large project like the Central Interceptor can be disruptive, and work can be noisy and busy. We'll make sure we keep you informed with what's happening and work to minimise disruption, where possible.

We're committed to working with the community before and during construction. We'll send out regular newsletters and we'll be out and about in the communities near our construction sites. If you see us in your neighbourhood come and have a chat - we'd love to hear from you.



School children taking part in our education programme.



Tree planting at Mt Albert Grammar School in June 2019.

The Central Interceptor team members joined volunteers from Mt Albert Grammar School (MAGS) staff and students, local environmental groups, residents and friends for a tree planting day at ASB MAGS farm. Volunteers made light work of planting 900 trees along the Meola Stream bank on the farm. The event is part of on-going work to rehabilitate the upper stream and wetland area and the Central Interceptor team will be helping with more plantings next year.

We encourage you to sign up to our newsletter so you know what's happening throughout the project – go to [www.centralinterceptor.co.nz](http://www.centralinterceptor.co.nz) to sign up.



# Tō tātou Tāmaki Makaurau

“Tāmaki Makaurau, Tāmaki herenga waka, Tāmaki herenga tangata”

Lots of people desire to live and visit Auckland. It's a place that people of many nationalities move through by road, rail, sea and air.

Mēnā ka tau te mauri i te taiao ka tau te oranga o te ira tangata arā kē te huarahi. This means, mankind's well-being is assured when the environment is in balance.

We're helping make Tāmaki Makaurau a great place for all people to live and visit. Our project recognises water and our harbours as taonga - a valuable resource.

Our project embraces five pou or sustainability pillars

kotahitanga

- leadership and influence

kaitiakitanga

- natural environment

wairuatanga

- culture and identity

rangatiratanga

- economic development and infrastructure

whanaungatanga

- wellbeing

# Our tunnel

We're building the tunnel between 15 and 110 metres underground, so you won't see much activity unless you are near one of the construction sites. Tunnelling will start at Māngere in 2021 and head north towards Western Springs.

We'll be using a tunnel boring machine or TBM, to build the tunnel and lay segments. We've used this method on other projects such as our Hobson Bay wastewater tunnel.



Hobson Bay tunnel construction.



An example of a large tunnel boring machine used for tunnelling deep underground



## Meet our team



### Our contractor - Ghella Abergeldie Joint Venture

We've engaged Ghella Abergeldie Joint Venture (GA) to build Watercare's Central Interceptor.

GA has successfully completed numerous projects of this scale across the world. With over 150 years of international tunnelling expertise and extensive experience working on major water and wastewater projects, the team combines global technical skills and resources.

Whanau is at the heart of GA's culture and will drive the way in which it engages with the community. GA's philosophy is to construct a quality project while minimising impacts to the local community. You'll see people from GA at the construction sites throughout the project.

*"We're thrilled to be part of this important project and help shape Auckland's future for the better. We'll enjoy working in beautiful Tāmaki Makaurau to help make the waterways sparkle."* Alfonso Pupi, Ghella Abergeldie Project Director.



### Our people

To deliver the Central Interceptor, we have brought together a talented team of local and international experts led by Executive Programme Director Shayne Cunis. Shayne has over 20 years' experience managing public facing teams and is passionate about making a difference for the people of Auckland. *"I am proud to lead a team of enthusiastic and dedicated people committed to building not only one of Auckland's largest infrastructure projects but also leaving a legacy for Auckland that goes beyond helping to clean up our environment. We look forward to starting work and getting to know our neighbours as we build this exciting project"*. As work gets underway there will be many opportunities to meet the team and talk about the project.

## A message from our chief executive

*I'm delighted that Watercare and our contractors, Ghella Abergeldie Joint Venture, are bringing the Central Interceptor to Tāmaki Makaurau. We're on track and excited to arrive at this milestone.*

*This massive project will improve the health of our city's waterways by reducing wet-weather overflows and providing for population growth. It will create employment and opportunities for Auckland.*

*Over the next few months you'll be hearing more about the Central Interceptor as we engage with the local communities.*

*Ngā mihi mahana*  
Raveen Jaduram

