

Connecting to Watercare's Vacuum Wastewater Collection System in Clevedon

Drainlayer Notes

Background

Watercare Services Ltd installed a wastewater collection system to serve existing residents in Clevedon and new development in the area. Because of the flat topography, Watercare chose a vacuum collection system.

Vacuum systems are composed of vacuum pits (similar in size and shape to gravity manholes) and vacuum pipes connecting the pits to a vacuum station. Wastewater flows by gravity into a vacuum pit. Automatic sensors periodically release the contents of the pit into the vacuum pipe and the waste gets pulled to the vacuum station.

In Clevedon, Watercare is responsible for installing vacuum pits that will serve existing residents and small developments immediately adjacent to one of the main roads. Developers will install vacuum pits and vacuum pipes for larger developments.

Connecting an Existing Resident/New Home to the Vacuum Pit

Existing residents in Clevedon who wish to abandon their septic tank and become Watercare customers may contact you for a quote to connect their home to the new network. New subdivisions directly adjacent to a main road may also contact you to connect a new home. Your work will consist of rerouting the existing home's waste pipes from the septic tank to the property boundary with the main road. Watercare will install a gravity 150 mm PVC pipe from the designated vacuum pit to the property boundary. You will make the connection from the home's drainage to the Watercare pipe at the property boundary.

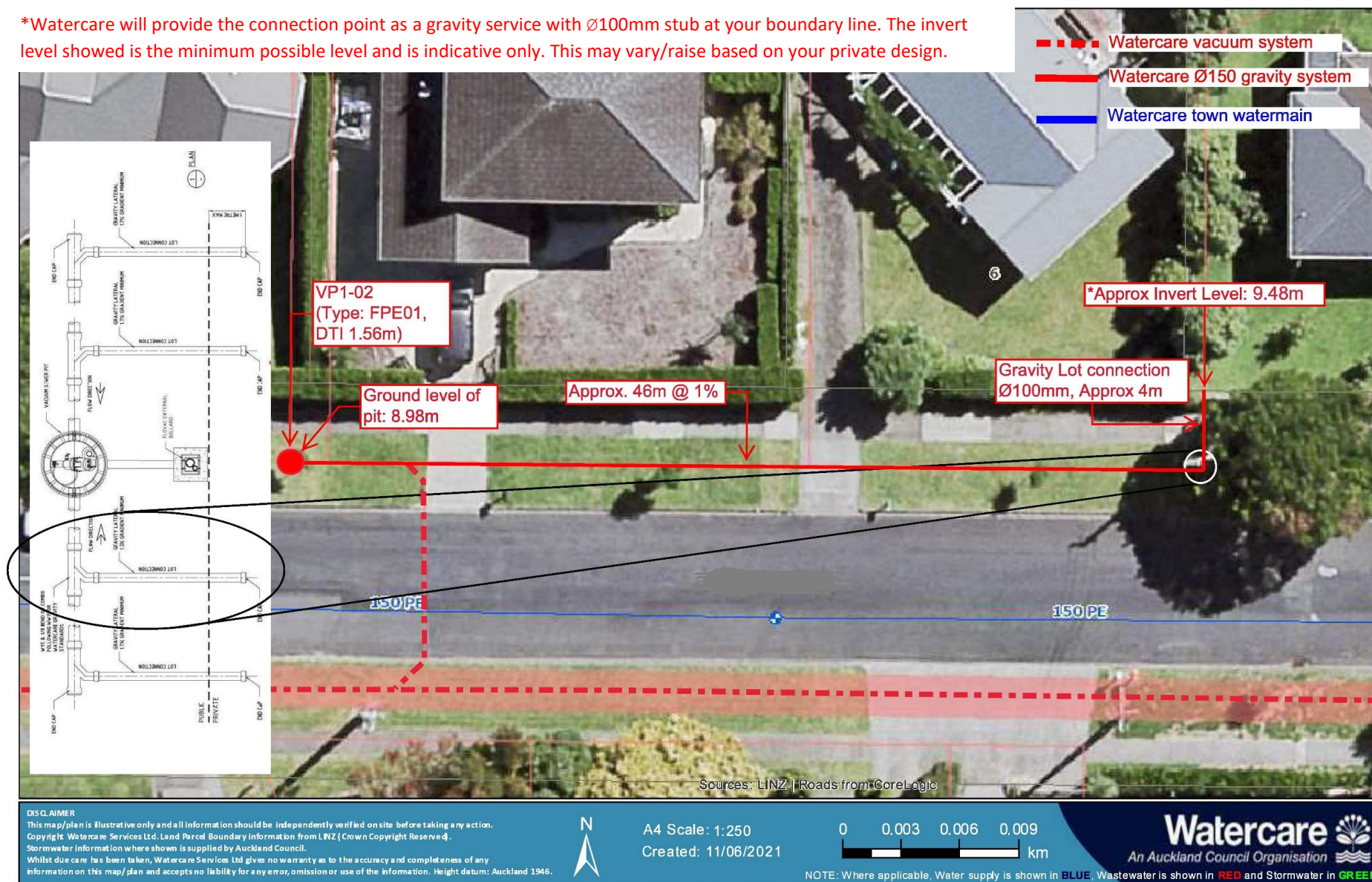
Any customer wishing to connect to the system will apply to Watercare and request a vacuum PIT MAP. You can request a pit map also, on the customer's behalf. The pit map will show you WHERE the 150 mm pipe will be located. You can ask us to move this location to any point along the property boundary, whatever suits the homeowner.

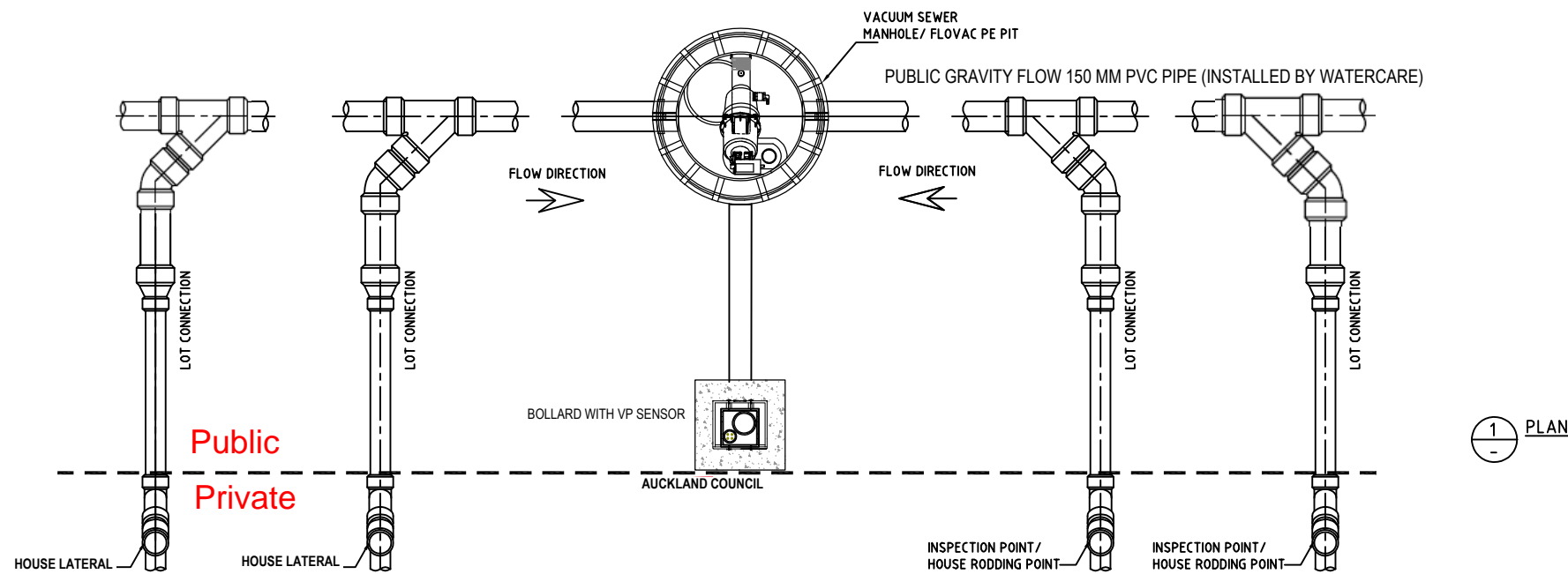
The pit map will also show the ELEVATION of the 150 mm pipe at the location chosen. You will need this to confirm that the home's FFL is 1.2 m or more above the soffit of this connection. Because of the unique operation of vacuum pits, it is likely we can offer a DISPENSATION to this requirement, if the home does not quite meet the required 1.2 m.

We have set up an email to answer queries related to Clevedon connections. Please contact us at clevedonnetwork@water.co.nz with any questions.

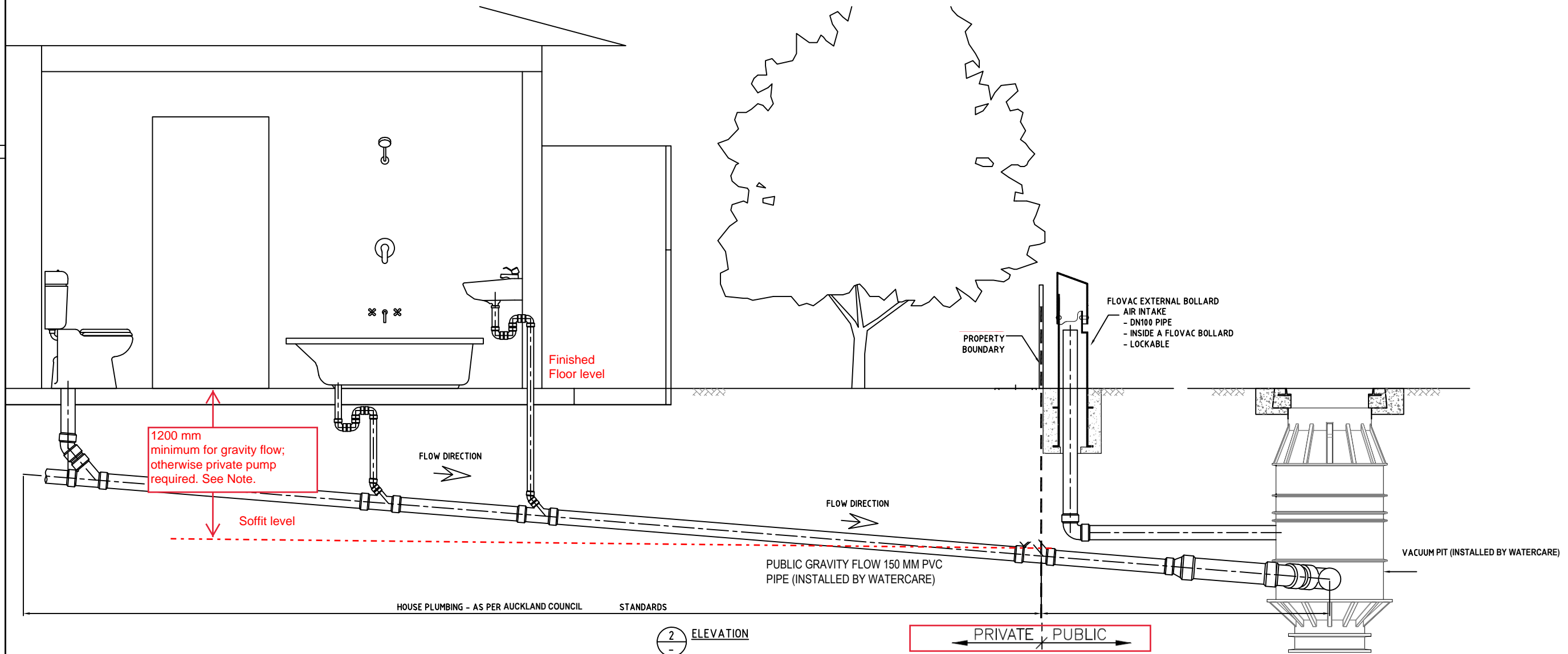
Attached to this document is a schematic of a house connection to a vacuum pit and a sample PIT MAP.

*Watercare will provide the connection point as a gravity service with Ø100mm stub at your boundary line. The invert level showed is the minimum possible level and is indicative only. This may vary/raise based on your private design.





- NOTES:
1. ANY DISCREPANCY FOUND IN THE DRAWINGS SHOULD BE CONSULTED WITH THE ENGINEER
 2. DIMENSIONS ARE IN MILLIMETERS AND LEVELS IN METRES UNLESS INDICATED OTHERWISE
 3. HOUSE PLUMBING ARRANGEMENT AS PER AUCKLAND COUNCIL STANDARDS
 4. WHERE 1.2 M DISTANCE FROM FFL TO SOFFIT IS NOT MET, A PRIVATE PUMP IS REQUIRED.



B	25.03.14		UPDATED VENTING OPTIONS	CG	CE	RW/DS	DESIGN SURVEY NONE	VERTICAL DATUM NONE	DES CALC	NORTH POINT	CLIENT:	<div>COPYRIGHT</div> <div>THE CONCEPT AND INFORMATION CONTAINED IN THIS DOCUMENT IS THE COPYRIGHT OF FLOVAC SYSTEMS PTY LTD. USE OR COPYING OF THIS DOCUMENT WITHOUT WRITTEN PERMISSION OF FLOVAC SYSTEMS CONSTITUTES INFRINGEMENT OF COPYRIGHT.</div> <div>VACUUM SEWERAGE SPECIALIST:</div> <div></div> <div>FLOVAC VACUUM SEWERAGE SYSTEMS PTY LTD UNIT 1, 43-51 COLLEGE STREET GLANDSVILLE, NEW AUSTRIA 2111 TEL (+61 2) 9617 7035 FAX (+61 2) 9617 3430 EMAIL INFO@FLOVAC.COM</div>	FLOVAC STANDARD DRAWINGS RETICULATION NETWORK INTERFACE OF HOUSE CONNECTION TO PUBLIC SEWER			ORIGINAL SHEET SIZE
ISSUE	DATE	GRID	REVISION	DRN	REC	APPD	ASCON SURVEY NONE	DES REF	DRN				FILE	DRAWING NO.:	ISSUE	A1
									Q.C. CHD				PROJECT	FVS-STD-800-001	B	SCALE NT