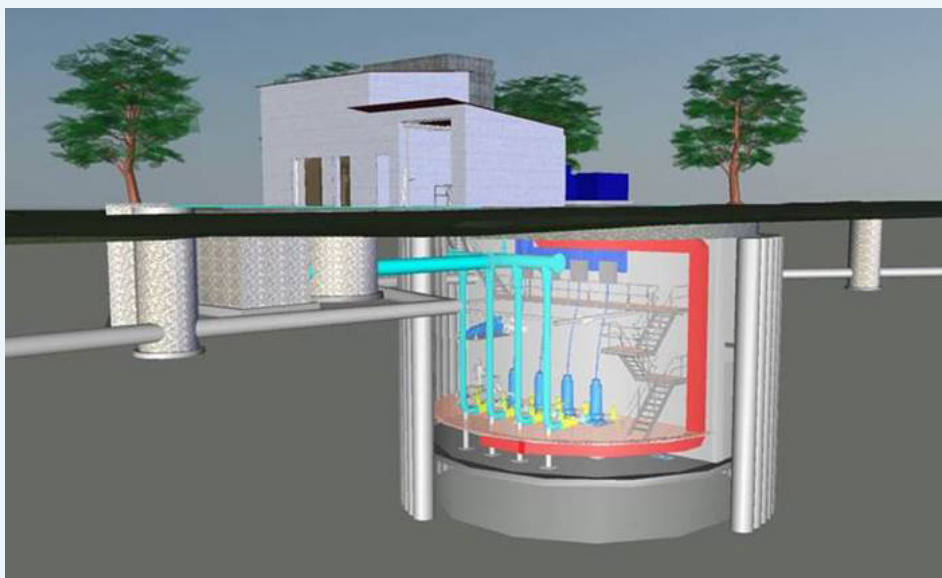


Mairangi Bay Wastewater Pump Station Project overview

The current Sidmouth Street Wastewater Pump Station at Mairangi Bay has serviced the communities of the northern East Coast Bays since the early 1960s. The pump station is aging and no longer able to cope with population growth in the area and volumes of wastewater during wet weather events.

In 2015, as part of the Reserve Management Plan consultation, we presented a concept for a replacement pump station. Since then we have refined the design, better integrated the concept with the reserve and identified the trees to be protected during construction.



Proposed design for the new Mairangi Bay Wastewater Pump Station showing underground components.

What are the benefits?

- Reduced wastewater overflows and improved beach water quality
- Improved open space and integration with the reserve
- New technology to manage and treat odour helping to reduce the site footprint
- New building designed to integrate with and improve the visual appearance of the reserve.

How will the works affect you?

- Construction is expected to take up to two years, starting mid-2021
- Temporary traffic measures will be in place at the beach end of Sidmouth Street during construction of the underground tank section of the pump station which will be built under the road
- Access to the southern end of the reserve around the existing pump station will be restricted during construction – site hoardings will be in place for public safety
- The works will generate some noise, vibration and traffic disruption which will be carefully managed in accordance with council plans and regulations
- We will be working to ensure access to the reserve and beach is maintained and any effects to residents and park users are minimised.

Project benefits

Improving
**beach water
quality**



The new pump
station catering for
**population
growth**



The estimated cost for
construction is

\$18 million

Construction
estimated to start

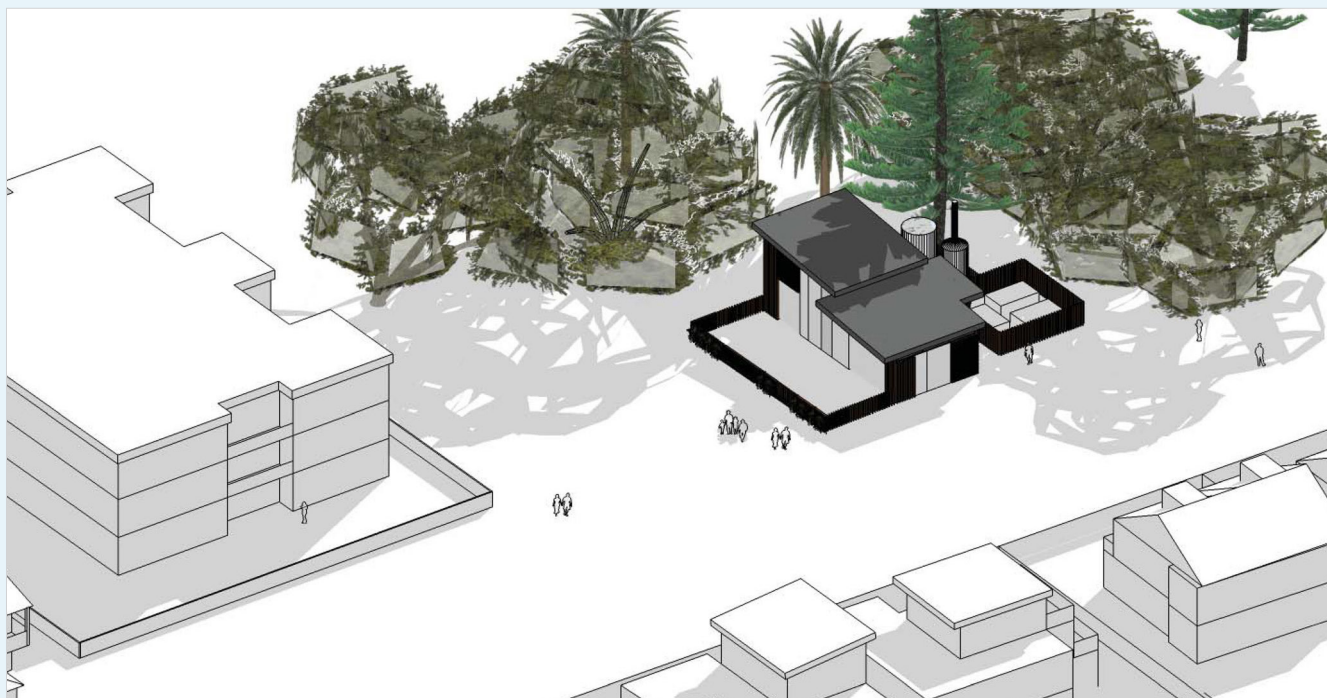
mid-2021



Why is a new pump station needed?

Sidmouth Street Pump Station receives wastewater from properties between Long Bay and Castor Bay and pumps it over East Coast Road to Rosedale Wastewater Treatment Plant for treatment.

Due to an increase in population and wastewater, the current wastewater pump station is struggling to cope, particularly during heavy rainfall when diluted wastewater can overflow up to 10 times per year, approximately 70 metres out to sea at engineered points on either end of Mairangi Bay. The new pump station will include larger pumps as well as additional underground storage where wet weather flows are able to be temporarily held until they can be pumped into the network, virtually eliminating overflows.



Artist's impression of what the replacement Sidmouth Street Wastewater Pump Station could look like.

What happens next?

Watercare has appointed Pipeline and Civil as the contractor who will undertake the construction of the project. They will firstly undertake the planning and methodology of how they will undertake the work.

The main construction is planned to take place in mid-June but there will be some preliminary activities on the reserve and at the end of Sidmouth Street as they undertake investigations and relocation of services in preparation for construction. The contractor will shortly start to get set up on with site hoardings for the safety of the public from construction activities. We know that construction activities are often be disruptive and busy at times. We will work with you to minimise effects of construction where possible and ensure there is clear signage and traffic management to direct the public around our site activities.

About the contractor for the project

Pipeline and Civil Limited has been contracting to Watercare for over 20 years, with a history of constructing pump stations, large diameter pipelines and other complex works across Auckland. They will be working closely with you and the wider community to ensure there is great communication and engagement during the project.

Keeping you informed:

For up to date project information please visit our website at www.watercare.co.nz search 'Mairangi Bay'.

If you would like to receive notice of project updates please email 'sign me up' to MairangiBay@water.co.nz



Mairangi Bay Reserve.



Mairangi Bay Beach.



Existing Sidmouth Street Wastewater Pump Station.

