

# Southwest Wastewater Servicing

Kingseat, Clarks Beach, Glenbrook Beach and Waiuku

# Tonight's Event

- First of ongoing conversations with the community as we develop this solution
- Format for this event
- Opportunities for questions at the end
- Get in touch with us at [southwest@water.co.nz](mailto:southwest@water.co.nz)

Please note that this presentation will be recorded and posted online, for those who could not attend

# Introductions

Priyan Perera – Head of Strategy and Planning

Richie Waiwai – Poutiaki, Tikanga Māori

Tanvir Bhamji – Manager Production Consent Planning

Haydee Allan – Senior Wastewater Treatment Planner

Anshita Jerath – Resource Consent Planner

Brent Evans – Manager Local Board / Stakeholder Engagement

Leroy Beckett – Stakeholder Liaison

Jonathan Piggot – Wastewater Production Manager South

Garrett Hall – Technical Director (BECA)



# How do we currently provide wastewater services to: Waiuku, Glenbrook Beach, Clarks Beach and Kingseat?

## **Clarks Beach WWTP**

Serves the  
Clark Beach  
and  
Glenbrook  
Beach  
Communities



## **Waiuku WWTP**

Serves the  
Waiuku  
Community



## **Kingseat WWTP**

Serves a small portion of  
the Kingseat Community

# Working to Improve Outcomes

Watercare embarked on developing a programme to improve environmental outcomes, support community growth and enhancing service levels in Waiuku, Glenbrook Beach, Clarks Beach and Kingseat.

The programme we have developed will:

- Reduce the existing four discharge points down to one
- Provide a very high level of treatment
- Service growth in the long term
- Provide the opportunity to implement beneficial reuse in the future
- Provide sustainable solutions to our customers and these communities

# Southwest Discharge Consent Background

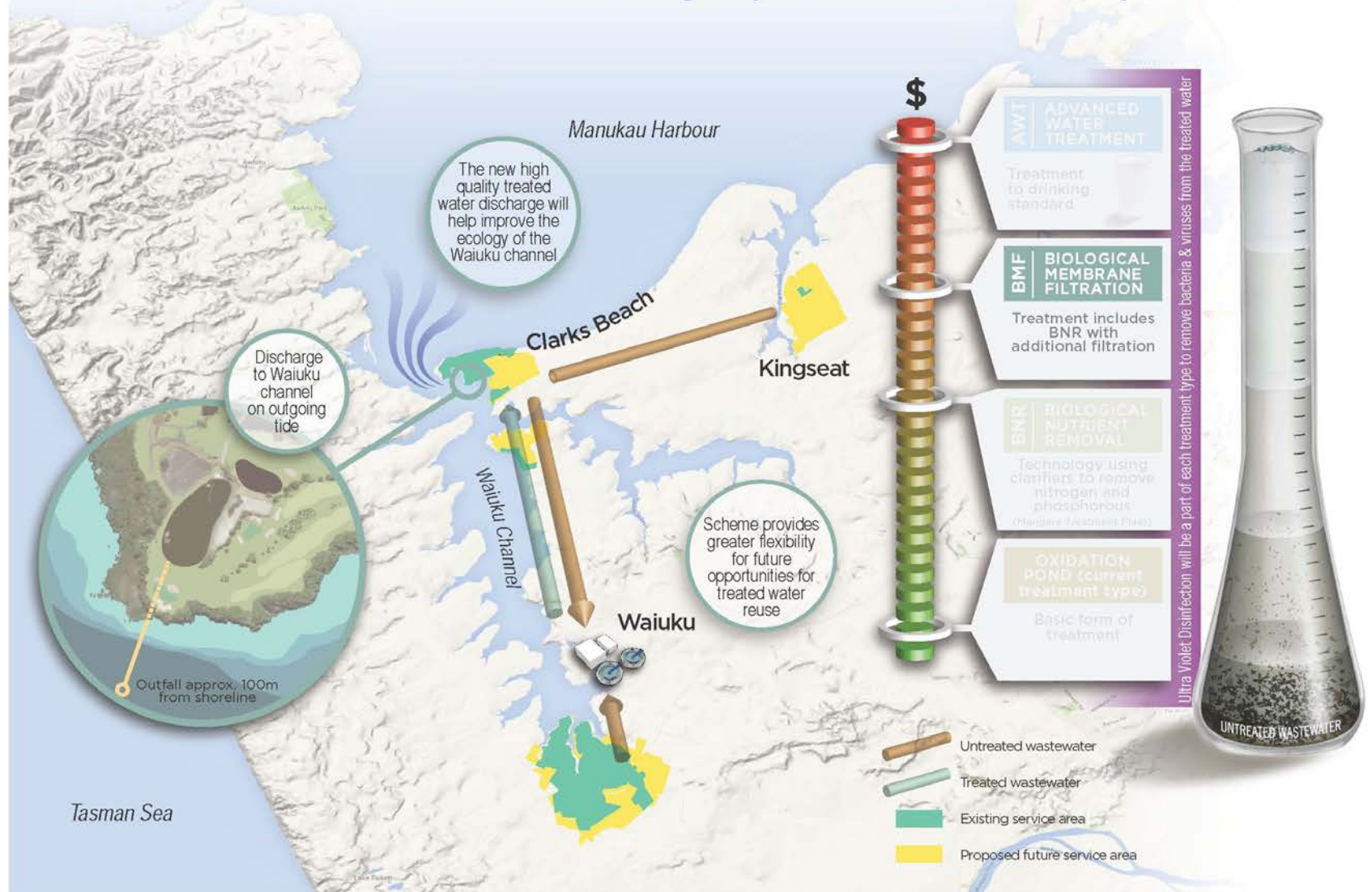
- Environment Court Consent order – June 2018 (Consent obtained to construct a new outfall structure and discharge treated wastewater into the Waiuku Estuary).
- Consent to be Operational by June 2026

## Discharge Consent Conditions

- Community Liaison Group
  - Review performance of the WWTP
  - Review results of monitoring and receiving environment monitoring report
  - Review Operations and Management Plan
- Monitoring and Technology Review conditions
  - Assess options for wastewater reduction and/or reuse
- Operations and Management Plans developed



# South-West Wastewater Servicing Project - Best Practicable Option



# What has changed?

**Our focus on carbon footprint and climate change impacts of our infrastructure programme.**

- Central Government focus on Climate change and reducing Carbon footprint
- Auckland Council's climate plan focuses on halving greenhouse gas emissions by 2030
- While Watercare considered climate change impacts such as sea level rise, the assessment of carbon emissions associated with this programme was not considered in the options assessment
- Watercare initiative:
  - Reduce carbon emissions from our operations by 50% by 2030
  - Reduce carbon emissions from construction by 40% by 2025
  - Achieve net zero emissions by 2050
- Deliver in a different manner as Kingseat developers not signing up to implement pipeline from Kingseat area



# Why are we considering a change to the Southwestern Wastewater Servicing Scheme

**To clarify we are not:**

- deviating from the positive environmental outcomes
- Seeking to change our resource consent requirement

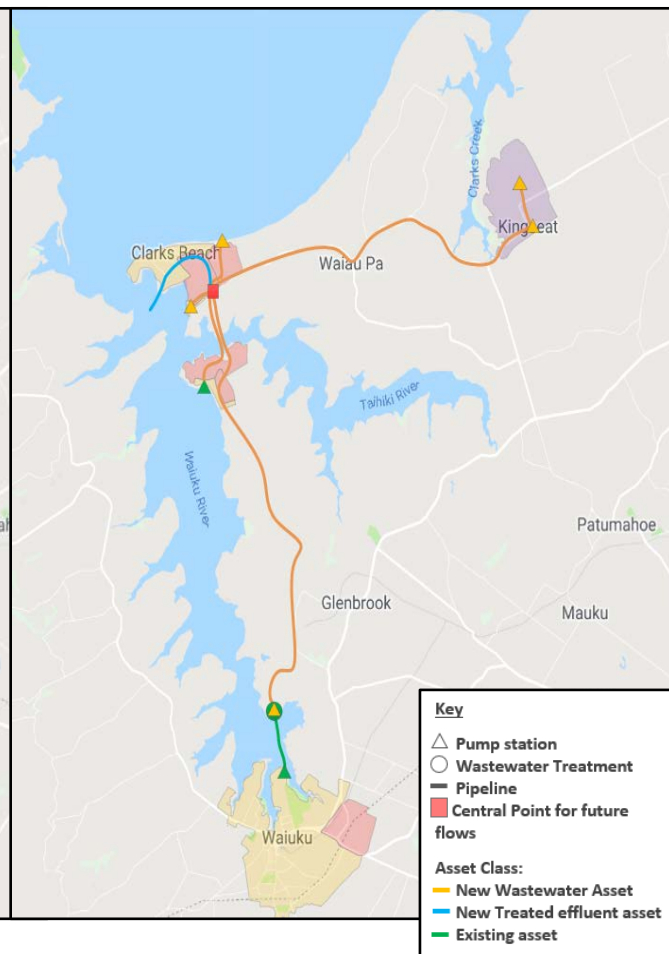
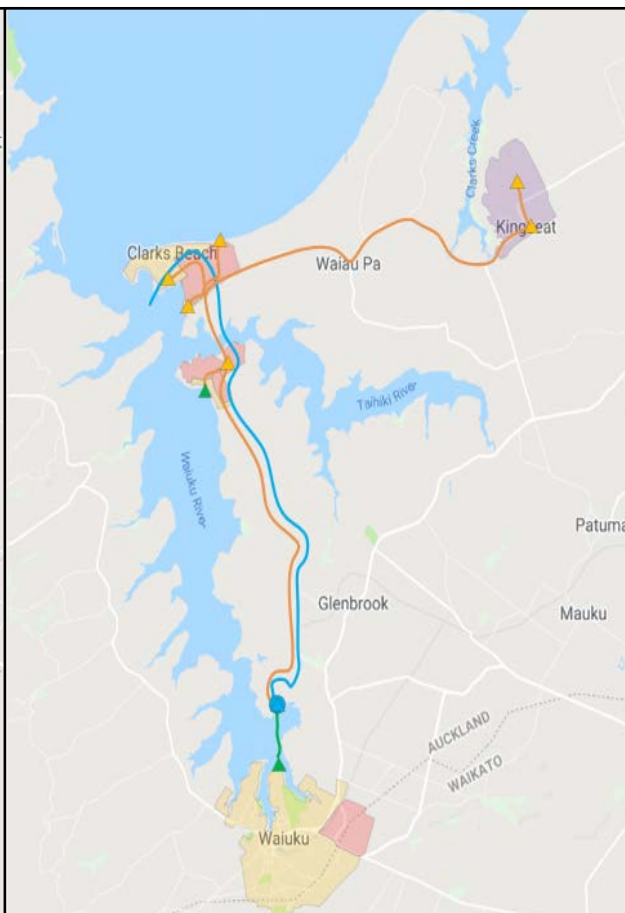
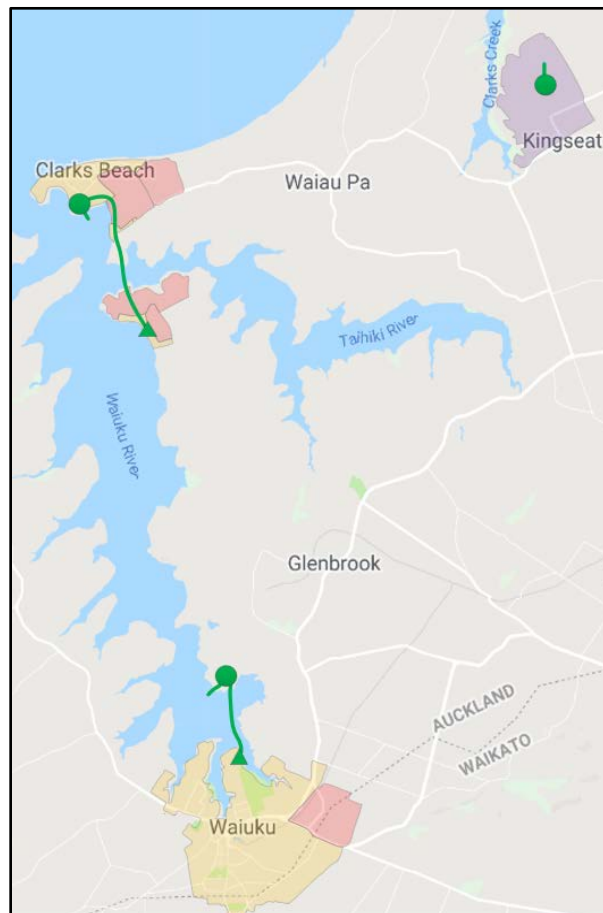
**But to improve the carbon and cost efficiencies of this wastewater scheme we are considering:**

- Removing the need for a return pipeline from Waiuku to Clarks Beach (10km length) which will reduce the construction carbon by about 23% or 6,600 tCO<sub>2</sub>e
- Ensure we are prudently and effectively managing our financial position and spending our capital funding wisely
- Improve the operability by removing the raw wastewater pipe between Clarks Beach and Waiuku.
- Reduces the ongoing operating costs and our carbon footprint for future generations

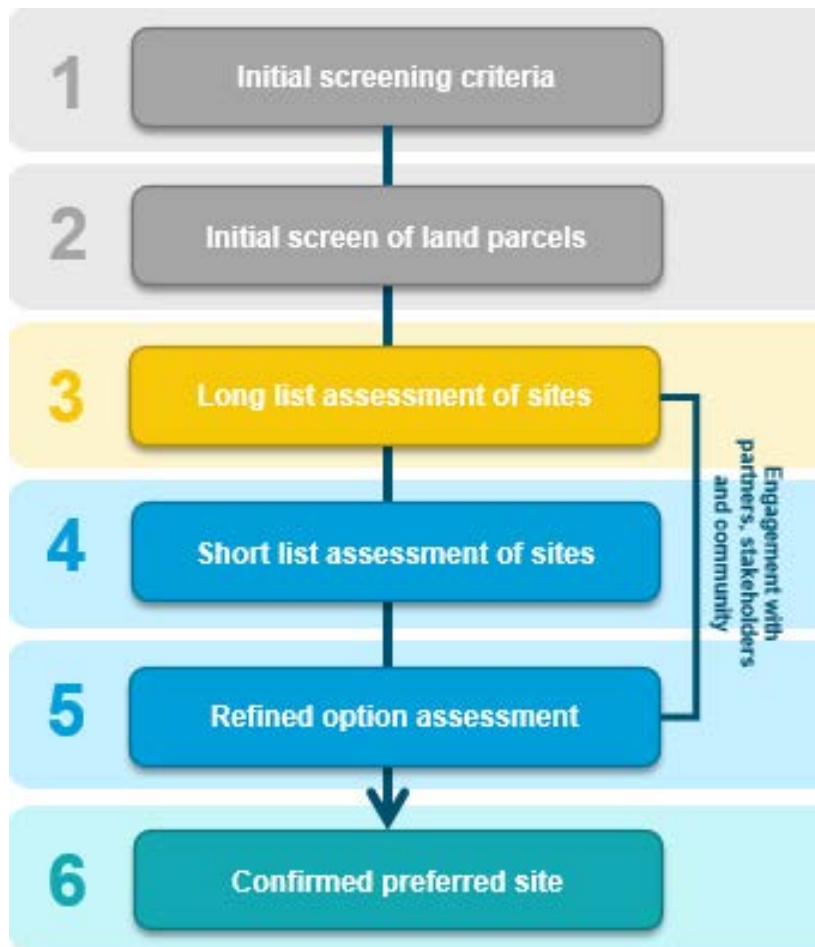
## Existing Scheme

## Proposed South-West Discharge Scheme (2018)

## Optimised Scheme For Consideration/Feedback



# Methodology



## Site requirements

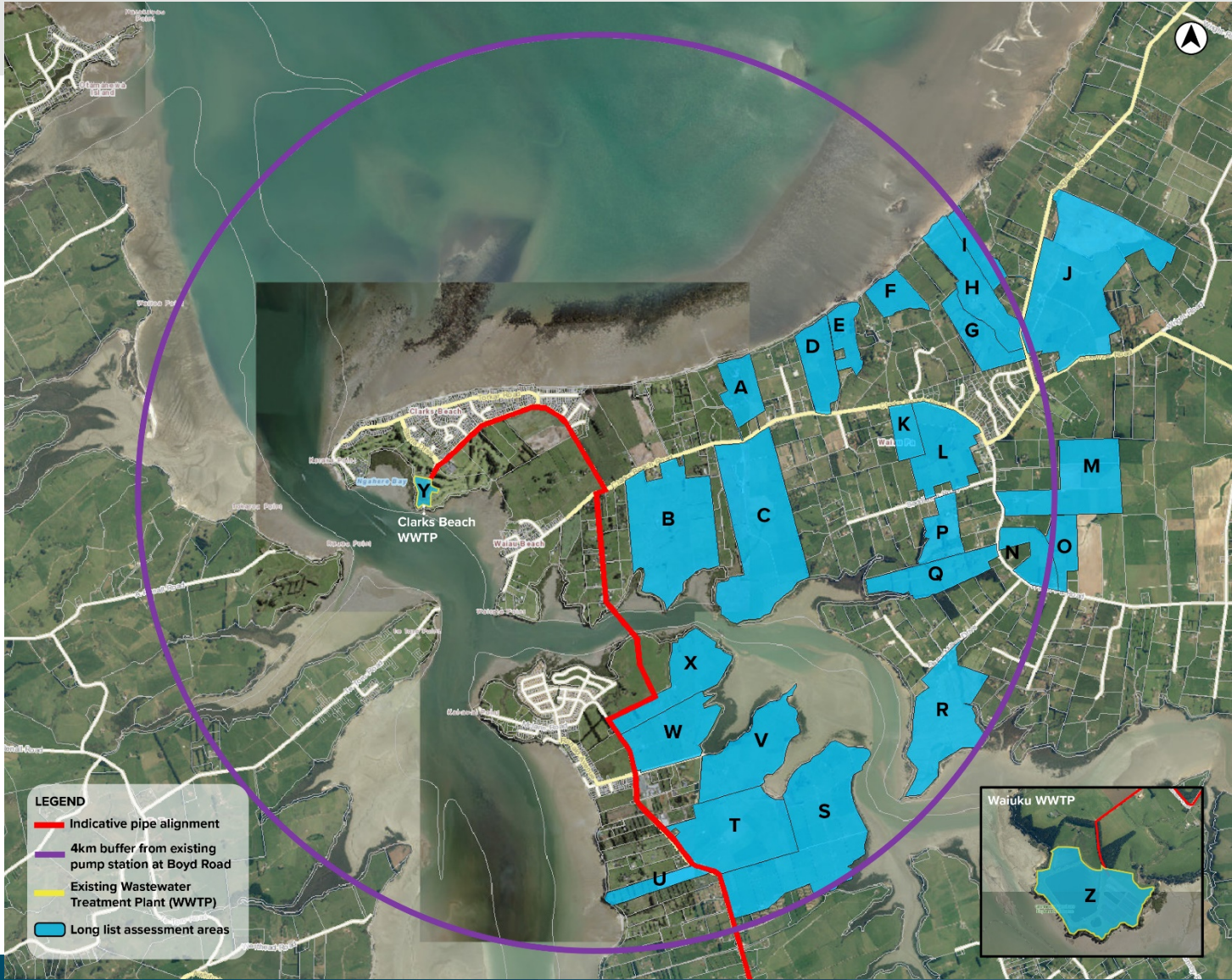
- We are seeking developing a site that will be future proofed in a variety of potential growth scenarios
- Additional area allowance for an Advanced Water Treatment Plant process.
- This area is approximately 4 ha.
- Inclusion of a 200m buffer around the 4ha site.
- The land requirement for the WWTP + buffer is approximately **30 ha**.

## Initial screening

- Exclude urban and future urban zoned land
- Exclude sites less than 10ha
- Within 4km of Boyd Rd collection point
- Exclude sites west of Waiuku Channel

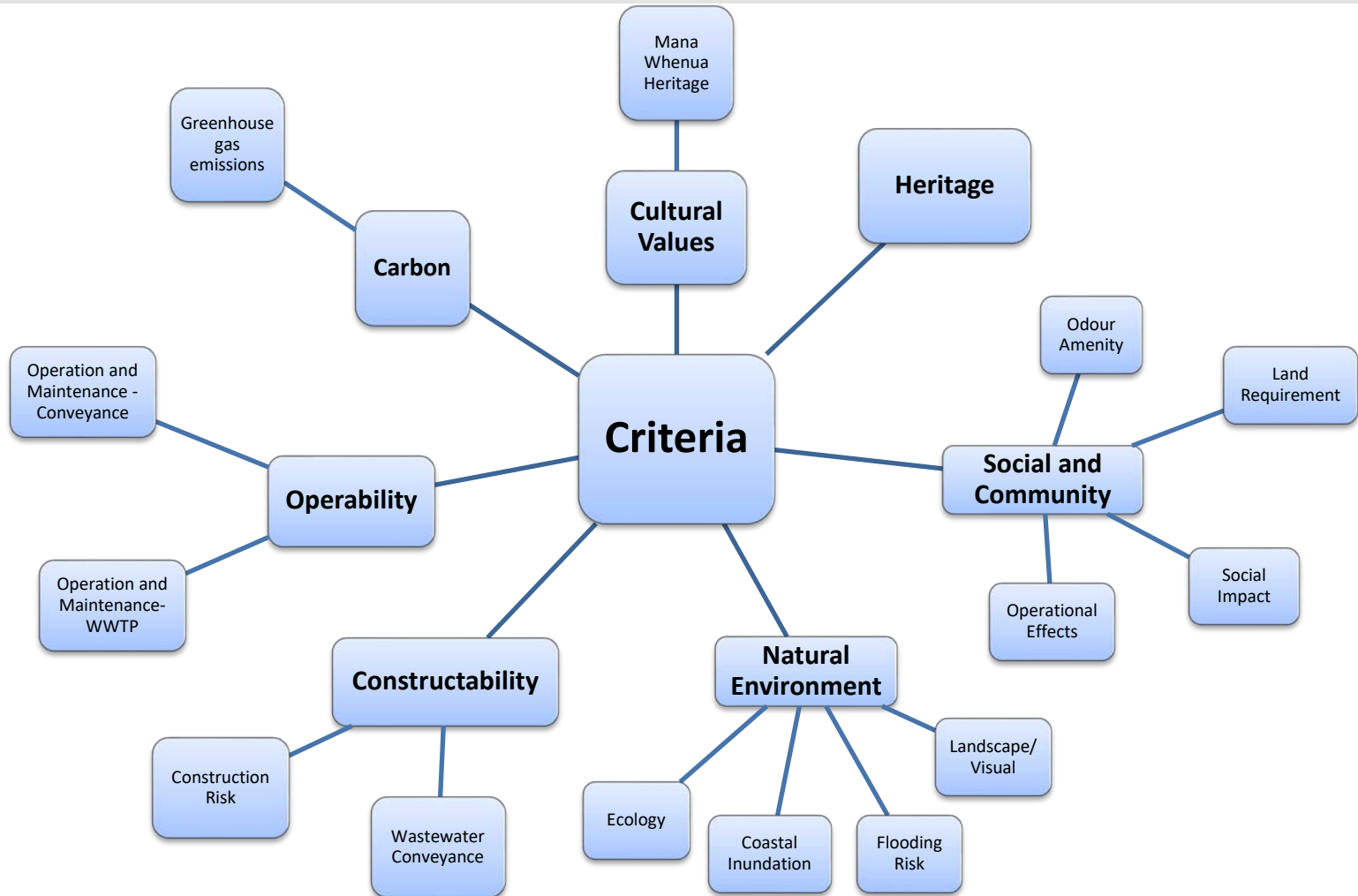


# Long List Options

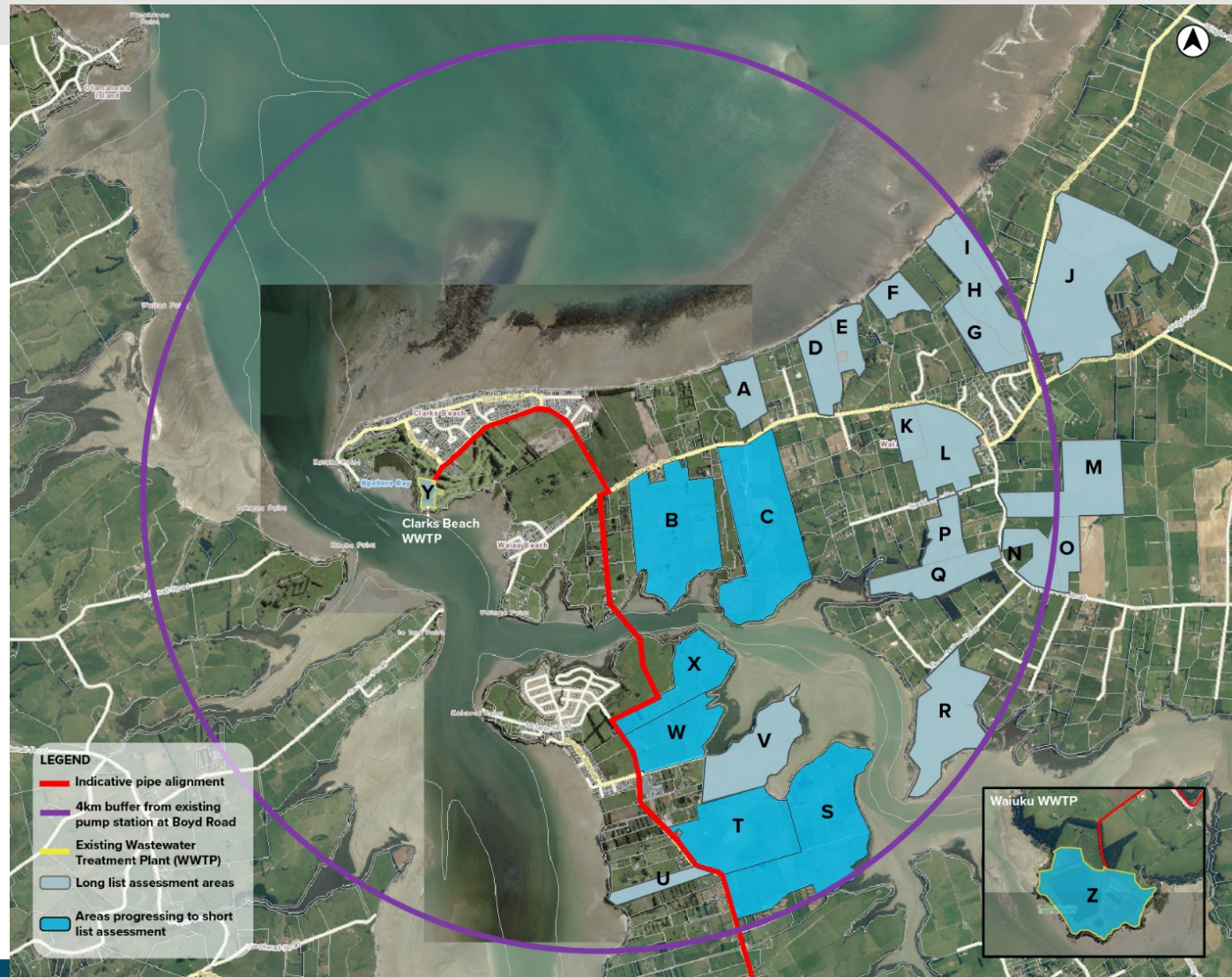




# Long-list Criteria



# Short-listed sites based on technical criteria



Note: Short-listed sites are indicative and not finalised.

# Next Steps

- Feedback from the Community on the options by next week (COB Wednesday 6<sup>th</sup> October)
- Over the course of October, Watercare will carry out site specific studies and undertake a detailed analysis. The short-listed sites will be shared with the community thereafter.
- Second Community Information session to be held in November (date TBC – hopefully in person)
- We will continue to discuss with Mana Whenua
- Continue discussions with CLG and Community
- Continue concept design and site investigations.
- Construction to commence in the next 2 years
- Scheme operational by June 2026

# Feedback avenues and mechanisms

We will be collecting feedback on the information presented today via the following communication channels:

- The feedback you provided tonight
- Email us at: [southwest@water.co.nz](mailto:southwest@water.co.nz)
- This presentation will be on our website under the South West project page, please share it with people who would be interested.