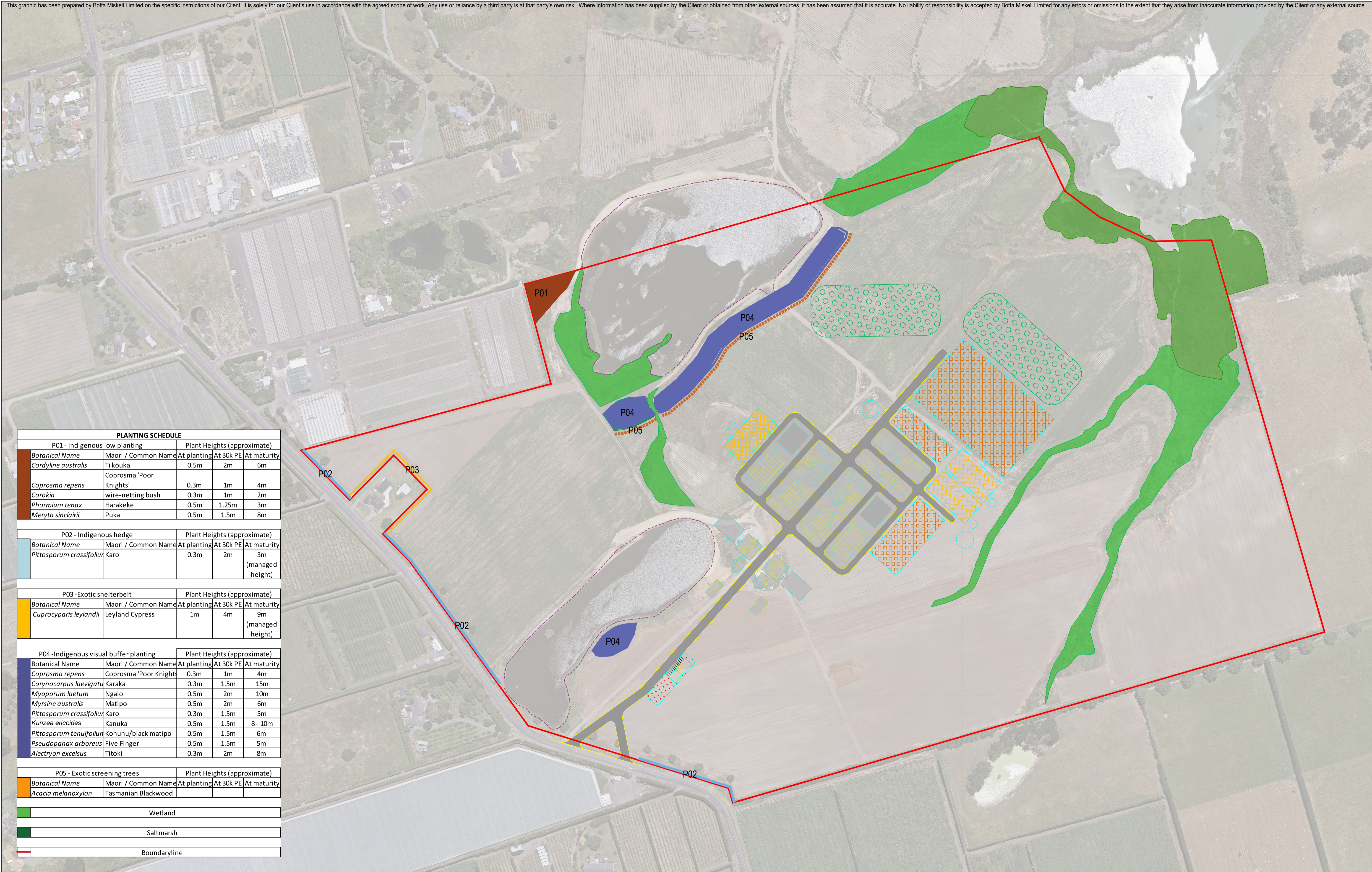


This graphic has been prepared by Boffa Miskell Limited on the specific instructions of our Client. It is solely for our Client's use in accordance with the agreed scope of work. Any use or reliance by a third party is at that party's own risk. Where information has been supplied by the Client or obtained from other external sources, it has been assumed that it is accurate. No liability or responsibility is accepted by Boffa Miskell Limited for any errors or omissions to the extent that they arise from inaccurate information provided by the Client or any external source.



PLANTING SCHEDULE				
<b>P01 - Indigenous low planting</b>				
<i>Botanical Name</i>	<i>Maori / Common Name</i>	<i>At planting</i>	<i>At 30k PE</i>	<i>At maturity</i>
<i>Cordyline australis</i>	Ti kōuka	0.5m	2m	6m
<i>Coprosma repens</i>	Coprosma 'Poor Knights'	0.3m	1m	4m
<i>Corokia</i>	wire-netting bush	0.3m	1m	2m
<i>Phormium tenax</i>	Harakeke	0.5m	1.25m	3m
<i>Meryta sinclairii</i>	Puka	0.5m	1.5m	8m
<b>P02 - Indigenous hedge</b>				
<i>Botanical Name</i>	<i>Maori / Common Name</i>	<i>At planting</i>	<i>At 30k PE</i>	<i>At maturity</i>
<i>Pittosporum crassifolium</i>	Karo	0.3m	2m	3m (managed height)
<b>P03 - Exotic shelterbelt</b>				
<i>Botanical Name</i>	<i>Maori / Common Name</i>	<i>At planting</i>	<i>At 30k PE</i>	<i>At maturity</i>
<i>Cuprocyparis leylandii</i>	Leyland Cypress	1m	4m	9m (managed height)
<b>P04 - Indigenous visual buffer planting</b>				
<i>Botanical Name</i>	<i>Maori / Common Name</i>	<i>At planting</i>	<i>At 30k PE</i>	<i>At maturity</i>
<i>Coprosma repens</i>	Coprosma 'Poor Knights'	0.3m	1m	4m
<i>Corynocarpus laevigatus</i>	Karaka	0.3m	1.5m	15m
<i>Myoporum laetum</i>	Ngaio	0.5m	2m	10m
<i>Myrsine australis</i>	Matipo	0.5m	2m	6m
<i>Pittosporum crassifolium</i>	Karo	0.3m	1.5m	5m
<i>Kunzea ericoides</i>	Kanuka	0.5m	1.5m	8 - 10m
<i>Pittosporum tenuifolium</i>	Kohuhu/black matipo	0.5m	1.5m	6m
<i>Pseudopanax arboreus</i>	Five Finger	0.5m	1.5m	5m
<i>Alectryon excelsus</i>	Titoki	0.3m	2m	8m
<b>P05 - Exotic screening trees</b>				
<i>Botanical Name</i>	<i>Maori / Common Name</i>	<i>At planting</i>	<i>At 30k PE</i>	<i>At maturity</i>
<i>Acacia melanoxylon</i>	Tasmanian Blackwood			
Wetland				
Saltmarsh				
Boundaryline				

ORIGINAL IN COLOUR

KEY



Printed 27/06/2023 5:19:06 pm

REV	DATE	DESCRIPTION
B	27.06.23	SITE PLANTING PLAN
###	###	###
###	###	###
###	###	###
###	###	###

APPRVD
OMa
OCo
OMa

GLENBROOK SWWWTP  
 ECOLOGY  
 SITE PLANTING PLAN

Design	OMA	Scale	Date
Drawn	OCo	1:2000@A1	27.06.2023
Check	OMa	1:4000@A3	

PLANTING PLAN	
DRAWING NO.	REVISION
#### ####	(B)

\\bmlakfs1\NAT\_design\2023\BM230101\_TL\_Southwest\_WWTP\CAD\MAX\Import\links\BM230101B\_x\_2200001.105\_OMa\_Planting\_OC.dwg