

Takapuna Foreshore Branch Sewer

Improving our beach environment

Watercare will soon be working along the Takapuna Beach foreshore improving the wastewater pipes to significantly reduce wastewater overflows and improve water quality and the beach environment.

Project background

Originally constructed in the 1940's, the Takapuna Foreshore Branch Sewer runs the full length of Takapuna Beach. Relining the current pipeline will extend the life of this section of the branch sewer by 50+ years.

Our current project will reline 1.6 kilometres of pipeline using trenchless technology as well as rehabilitating 36 manholes along the pipeline.

On occasion Watercare has received public reports of uncontrolled spills and overflows which have typically been caused by network blockages (i.e. roots, fats, debris obstructions). The lining work will improve this situation and allow identification of other contributing factors.

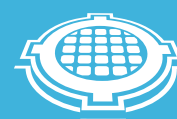
We have been addressing issues as they arise along this pipeline such as overflows, root damage and illegal connections however it is now necessary to take urgent action to address the issue in the aim that this relining work will make vast improvements. On completion of the relining works on-going environmental monitoring will take place for the following six months to identify any further issues which may be caused by other problems. We are also working with the team at Healthy Waters, collaborating to ensure that we have the best impact on the environment.



Key facts

Helps reduce wastewater

overflows into
the harbour



Improving
beach water
quality



Approximately
18 weeks
May–August
2022



Cost approximately
\$5.4 million

What's coming up

From early May the Watercare team along with our partner contractor, March Cato, will commence relining works from the southern end of Takapuna Beach, working north towards The Promenade.

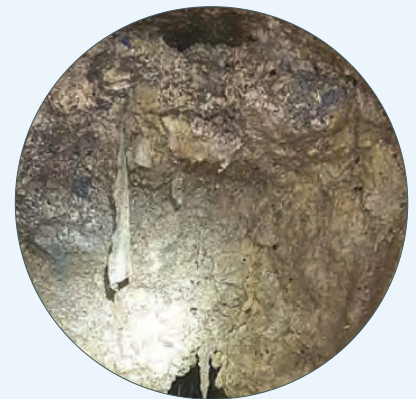
Working in small sections at a time, relining will be conducted using a thrusting method so no large trenches are needed, however sites will need to be fenced off to ensure health and safety needs are being met. Working south to north, works may not always be consecutive due to site conditions. Check our website for updates. This means that in some locations parts of the park and beach access may be temporarily blocked, along with the boat ramp. We will require access to a number of private properties along the beach foreshore which contain manholes. Watercare representatives will liaise with affected property owners directly.

The chosen method of relining the existing pipeline was chosen as the best solution as it will not require trenching or significant excavation, it is also fast and will have the lowest impact on local residents and beach users.

Did you know?

What causes an overflow? Fatbergs!

Items like wet wipes, sanitary products, dental floss and nappies; and fats, oil and grease from cooking don't break down in the wastewater network. A fatberg occurs when these items stick together in large, impenetrable clumps, and these can block pipes and cause overflows.



Rainy Days

Overflows can happen when rain gets into wastewater pipes and overwhelms them. It causes manholes and purpose-built structures to overflow with stormwater and wastewater and these can block pipes and cause overflows.

Small items can cause big problems for your toilet.



Keep in touch

Want to find out more about the project? Visit

www.watercare.co.nz/takapuna

If you have any questions about this project reach out to us at
TFBS@water.co.nz