

Omaha

Prioritisation: low (1)



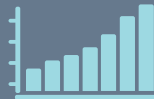
Population*

1,519



Growth forecast*

By 2040,
population
is expected
to grow to
2,035

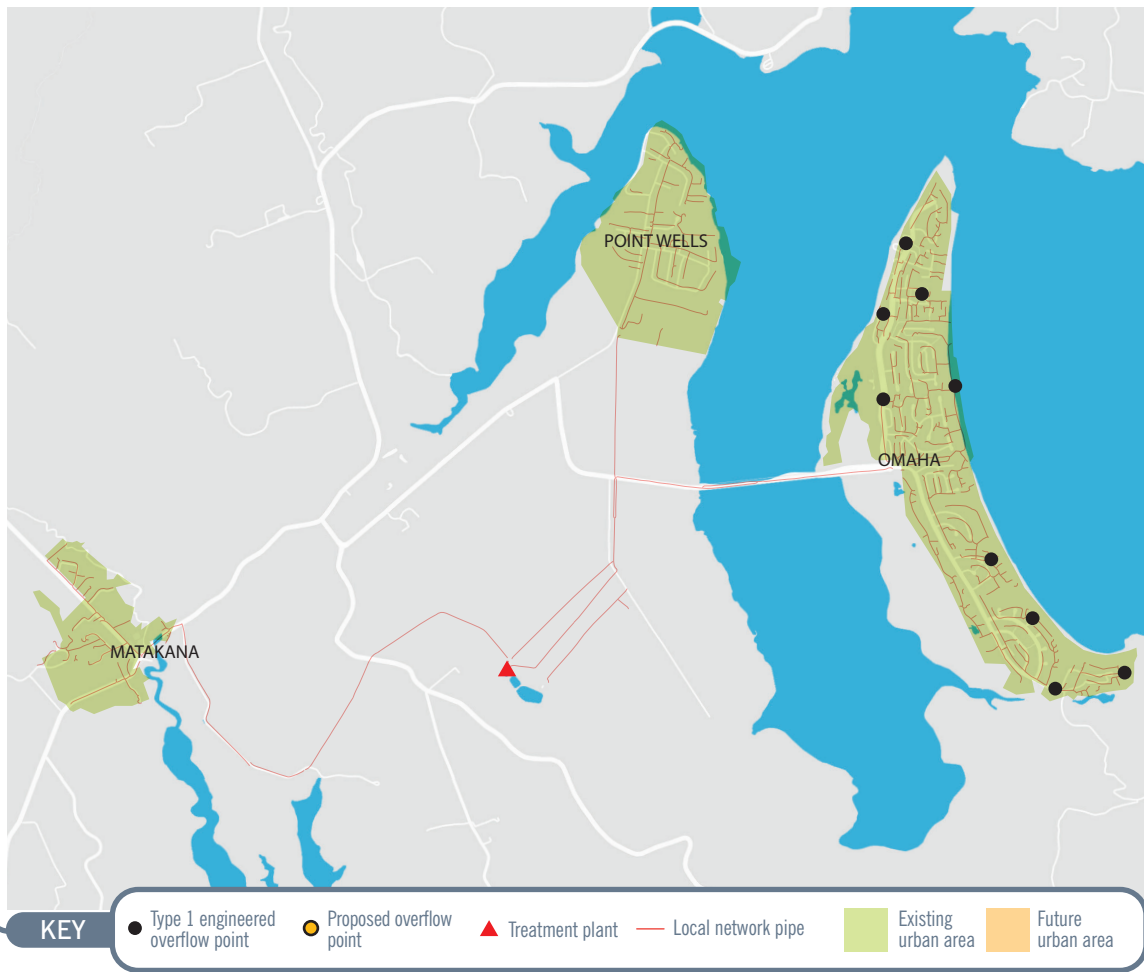


Omaha is a tourist catchment, boasting one of New Zealand's best white sand beaches and uninterrupted gulf and island views.

While there are a number of developments in this catchment, there are uncertainties in the scale, location and timing of growth in in Omaha. Therefore, we will continue to monitor growth in this area.

There will be no major proposed work over the next six years.

We will continue to maintain the network through renewal programmes, repairing ageing infrastructure and carrying out investigation works such as Inflow and Infiltration.



* **Population:** is an estimate of the population of Watercare customers in the catchment area.

* **Growth forecast:** population data is provided by Auckland Council and based on the latest projected information, which means that the forecasted dates may vary.