

# Pukekohe

**Prioritisation:**  
medium



**Growth forecast\***

By 2058,  
population  
is expected  
to grow to  
44,500



**Population\***

26,318



**Drivers for project**

To service growth and  
mitigate impacts from  
Engineered Overflow  
Points (EOP)

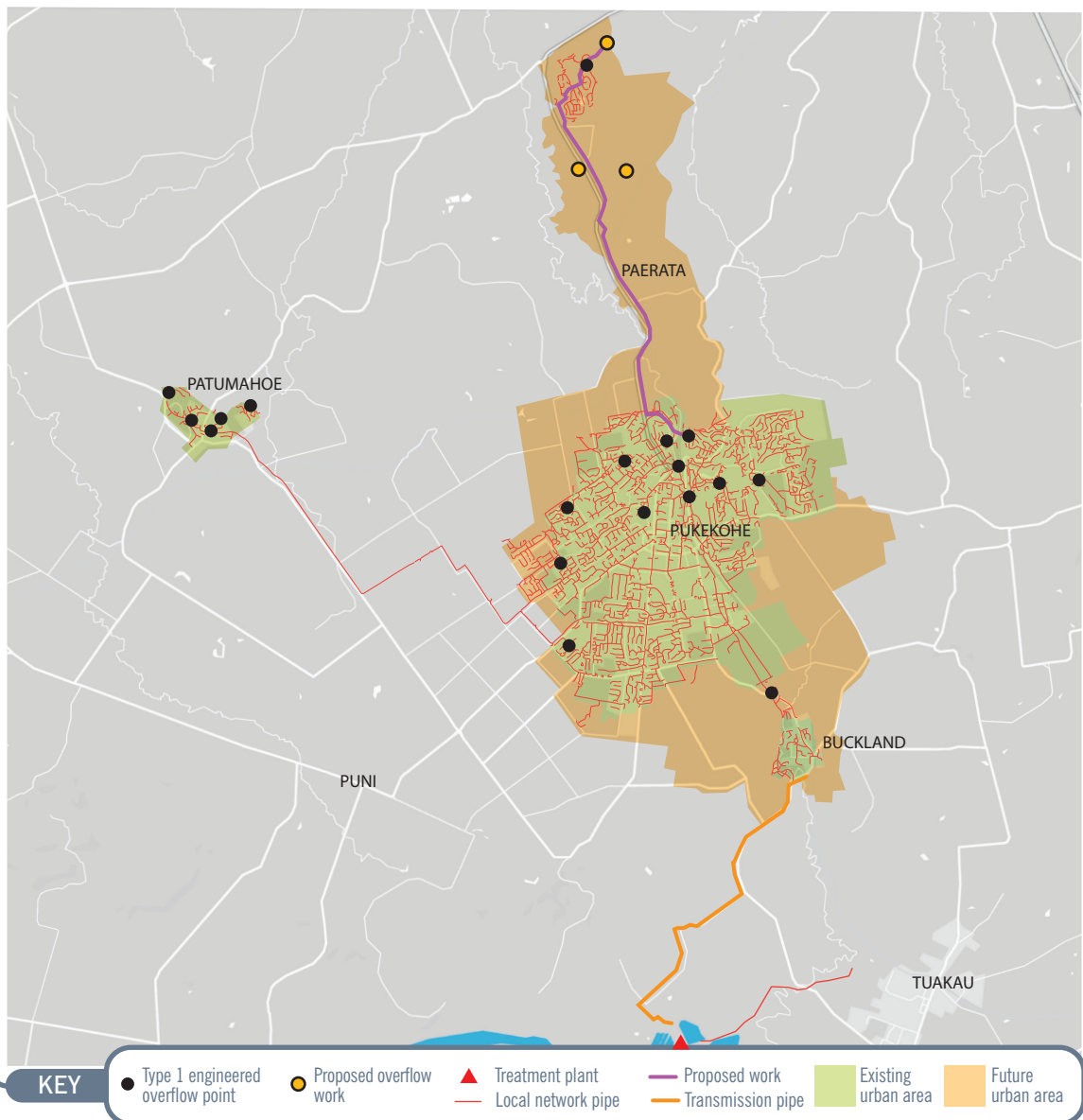
**Estimated investment: \$115 million**

The Whangapouri Creek Estuary has high ecological value. The catchment is estimated to experience significant growth.

## Work proposed over the next six years

- New sewer to provide capacity in the system.
- Pump station diversion to remove downstream capacity
- New Isabella pump station and associated pipework to service growth
- New Paerata pump station and associated pipework to service growth (location to be determined)
- New pipeline from Te Paea pump station to Paerata pump station

We will continue to maintain the network through renewal programmes, repairing ageing infrastructure and carrying out investigation works such as Inflow and Infiltration.



\* **Population:** is an estimate of the population of Watercare customers in the catchment area.

\* **Growth forecast:** population data is provided by Auckland Council and based on the latest projected information, which means that the forecasted dates may vary.

**Watercare**

