

Rosedale

Prioritisation: low (2)



Growth forecast*

By 2058, population is expected to grow to 349,730



Population*

252,607



Drivers for project

To service growth and mitigate impacts from Engineered Overflow Points (EOP)

Estimated investment: \$375 million

Areas served: Long Bay, East Coast Bays, Devonport - Takapuna, Shoal Bay, Upper Harbour North, Upper Harbour South

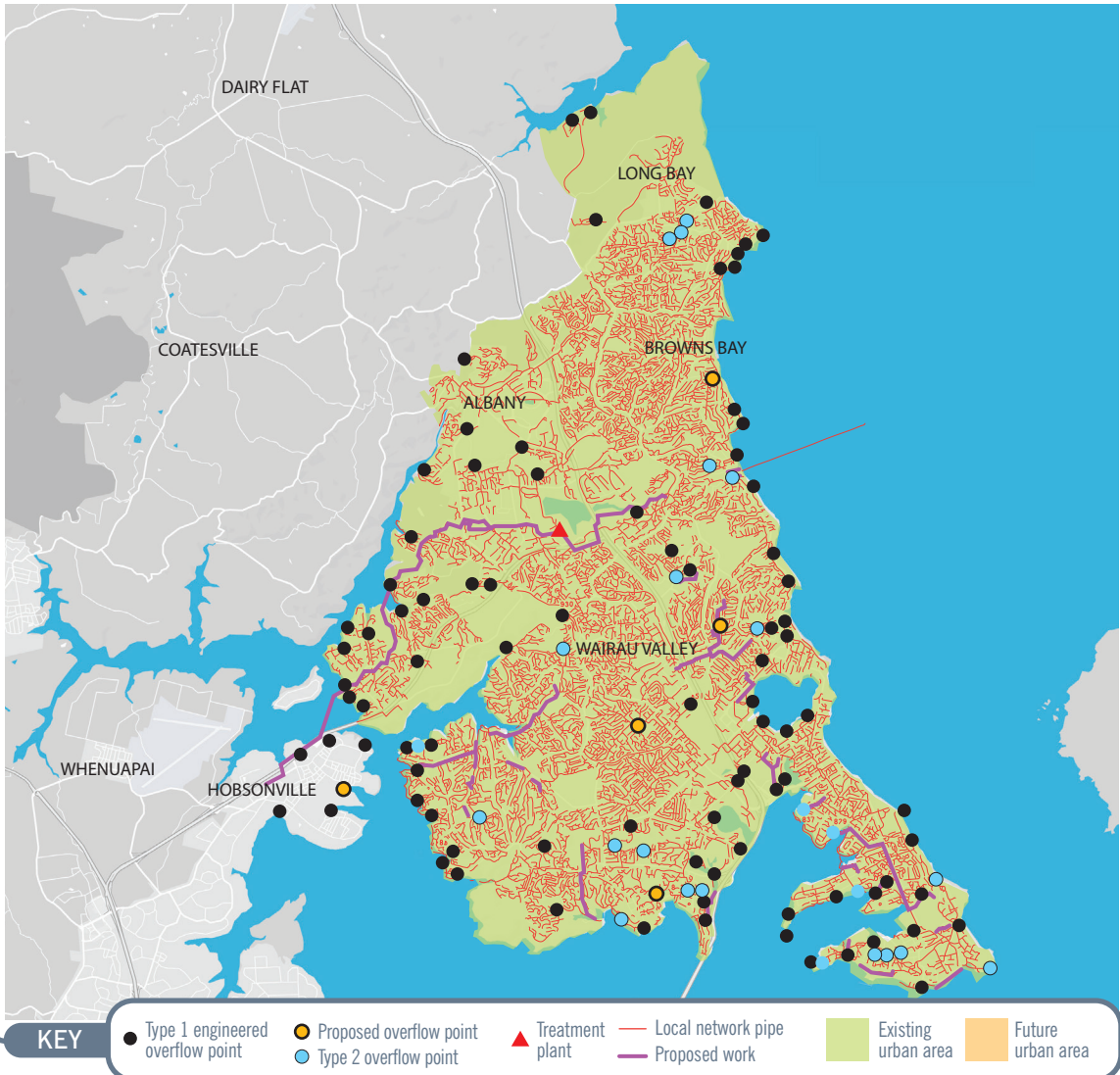
This catchment serves a diverse community and number of areas. The marine environment is protected. There is significant growth expected in Albany, Upper Harbour, Long Bay and intensification in Takapuna. The future growth will effect performance of our wastewater network. There are currently 18 EOPs.

Work proposed over the next six years

A number of projects in this area is currently underway.

- Pump station upgrades in Wairau, Sidmouth, Fred Thomas Drive, Chelsea, Alma and Lake Road Northcote.
- Sewer upgrades (increasing capacity) in Northcote and East Coast Bays.
- Flow diversion from Mangere to Rosedale and associated upgrades, as part of the Northern Interceptor project. To divert flow from the upper portion of the Western Interceptor to Rosedale.
- Upgrading existing outfall at several sites.

We will continue to maintain the network through renewal programmes, repairing ageing infrastructure and carrying out investigation works such as Inflow and Infiltration.



* **Population:** is an estimate of the population of Watercare customers in the catchment area.

* **Growth forecast:** population data is provided by Auckland Council and based on the latest projected information, which means that the forecasted dates may vary.

Rosedale projects by type



Chelsea Pump Station diversion to the Birkdale sewer

To divert flow to reduce overflows.



Mairangi Bay gravity sewer upgrade (Jutland diversion)

To reduce overflow frequency and provide for growth.



Forrest Hill catchment diversion

To divert flow to reduce overflows.



Alma Pump Station catchment diversion

To reduce overflow frequency and provide for growth.



Kahika pump station and associated pipework

To replace ageing assets and reduce overflows.



Sunnybrae sewer duplication

To reduce overflows and service growth. This is part of the Kahika pump station and associated pipework project.



East Coast Bay link sewer

To construct new sewers to cater for predicted growth and reduce non-compliance overflows as well as replacing ageing critical assets.



Upgrade of North Shore trunk sewer 8

To replace ageing assets, reduce overflows and provide for growth.



Penlink wastewater pipeline

New sewer across the Penlink Bridge for future proofing take flow from bridge.



Lake Road Northcote Pump Station and associated pipework upgrade

To replace ageing assets to cater for growth and reduce overflows.



Wairau Pump Station replacement and associated pipework upgrade

Upgrade Wairau pump station and replace associated pipework and ageing assets.



Northcote sewer upgrade works

Reduces the risk of failure on ageing asset and reduce overflows and provide capacity for growth.



Sidmouth Pump Station and associated pipework upgrade

To replace ageing assets which are causing poor performance. It will reduce overflows and provide capacity for growth.



East Coast Bays sewer upgrade

Upgrade of critical assets and installation of new sewers to cater for growth and reduce overflows



Torbay and Devonport pump station

To remove capacity constraint and reduce overflows.



Birkdale sewer upgrade

To reduce overflows and service growth.



Wairau Valley sewer diversion

To replace ageing assets and construct new sewers which will divert flow and reduce overflows and provide growth.



Linwood Ave sewer upgrade

To construct new sewers to reduce overflows and provide for growth. This is part of the Northern Interceptor project.



Jonathan Place sewer upgrade

To reduce overflows and provide capacity for growth.



Fred Thomas Drive Pump Station / storage

This replaces Barrys Point Pump Station project.



New Kahika pump station and associated pipeworks

Upgrade Kahika pump station and associated pipework to remove capacity constraint in the Bayview area and replace ageing sewer and reduce overflow.



The Northern Interceptor project

The Northern Interceptor will be constructed to divert flow from the upper portion of the Western Interceptor to Rosedale. This project will reduce overflows in the downstream catchment.

KEY



New



Upgrade



Diversion of wastewater flow



Increase capacity



Investigation



Other related projects*