

# Waiuku

**Prioritisation: low (1)**



**Population\***

**8,093**



**Growth forecast\***

By 2025,  
population is  
expected to  
grow to 9,103



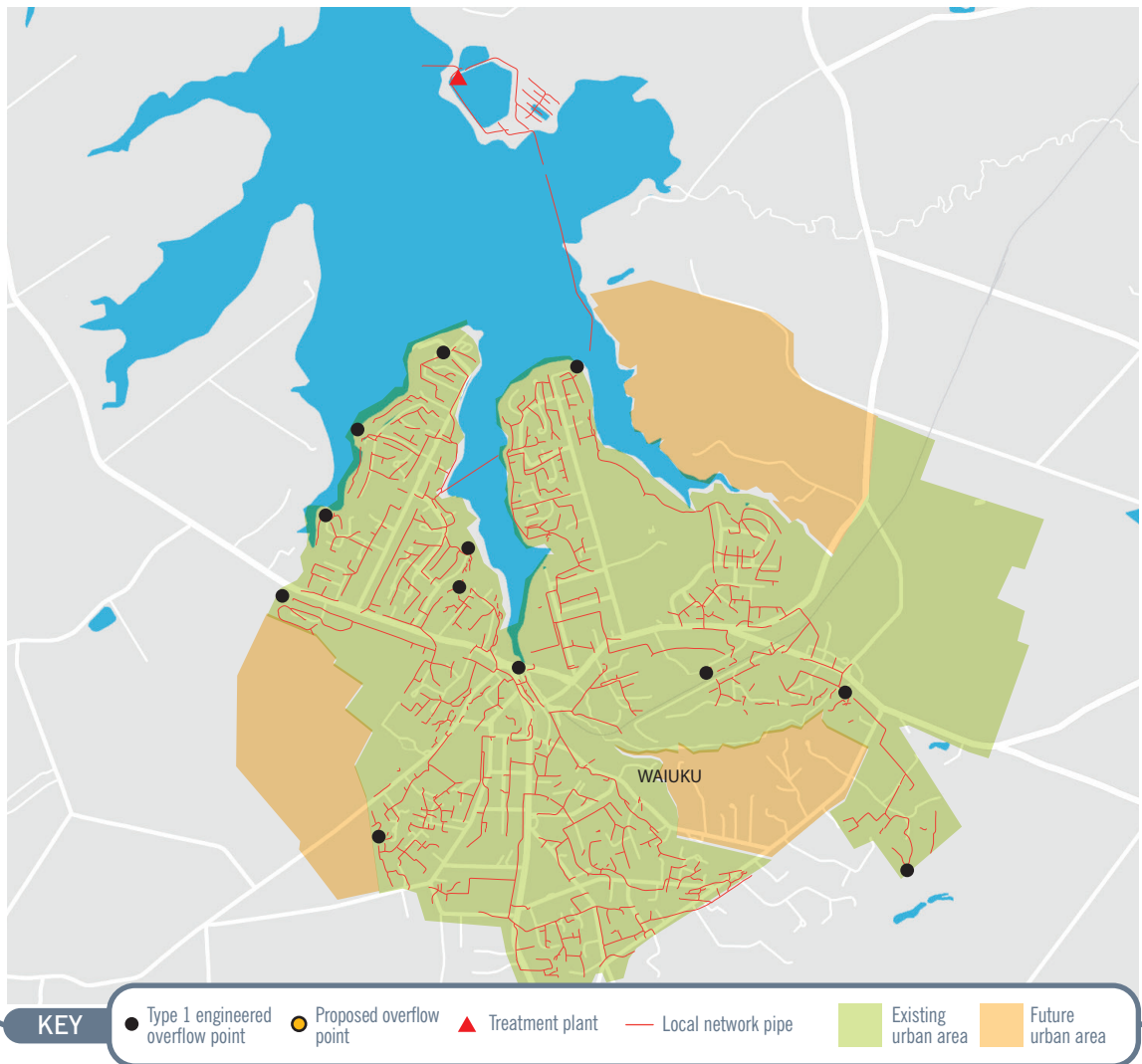
The Waiuku Estuary is recognised for its coastal environments and is scheduled in the Coastal Plan as an Area of Significant Conservation Value (ASCV). The estuary is identified as having highly valued cultural, spiritual, historical and environmental relationships to Te Iwi o Ngāti Te Ata. Accordingly, these same cultural values have been assumed to apply across all Waiuku receiving environments.

**There will be no major proposed work over the next six years.**

At present three wastewater treatment plants serve communities at Waiuku, Clarks Beach and Kingseat. Southwest servicing scheme will construct pipework and replace with one plant. Check out the project details here:

<https://www.watercare.co.nz/About-us/Projects-around-Auckland/South-west-wastewater-servicing>

We will continue to maintain the network through renewal programmes, repairing ageing infrastructure and carrying out investigation works such as Inflow and Infiltration.



\* **Population:** is an estimate of the population of Watercare customers in the catchment area.

\* **Growth forecast:** population data is provided by Auckland Council and based on the latest projected information, which means that the forecasted dates may vary.