

# Warkworth

**Prioritisation: medium**



**Growth forecast\***

By 2058,  
population is  
expected to  
grow to 10,633



**Population\***

**5,533**



**Drivers for project**

To service growth and  
mitigate impacts from  
Engineered Overflow  
Points (EOP)

**Estimated investment: \$200 million**

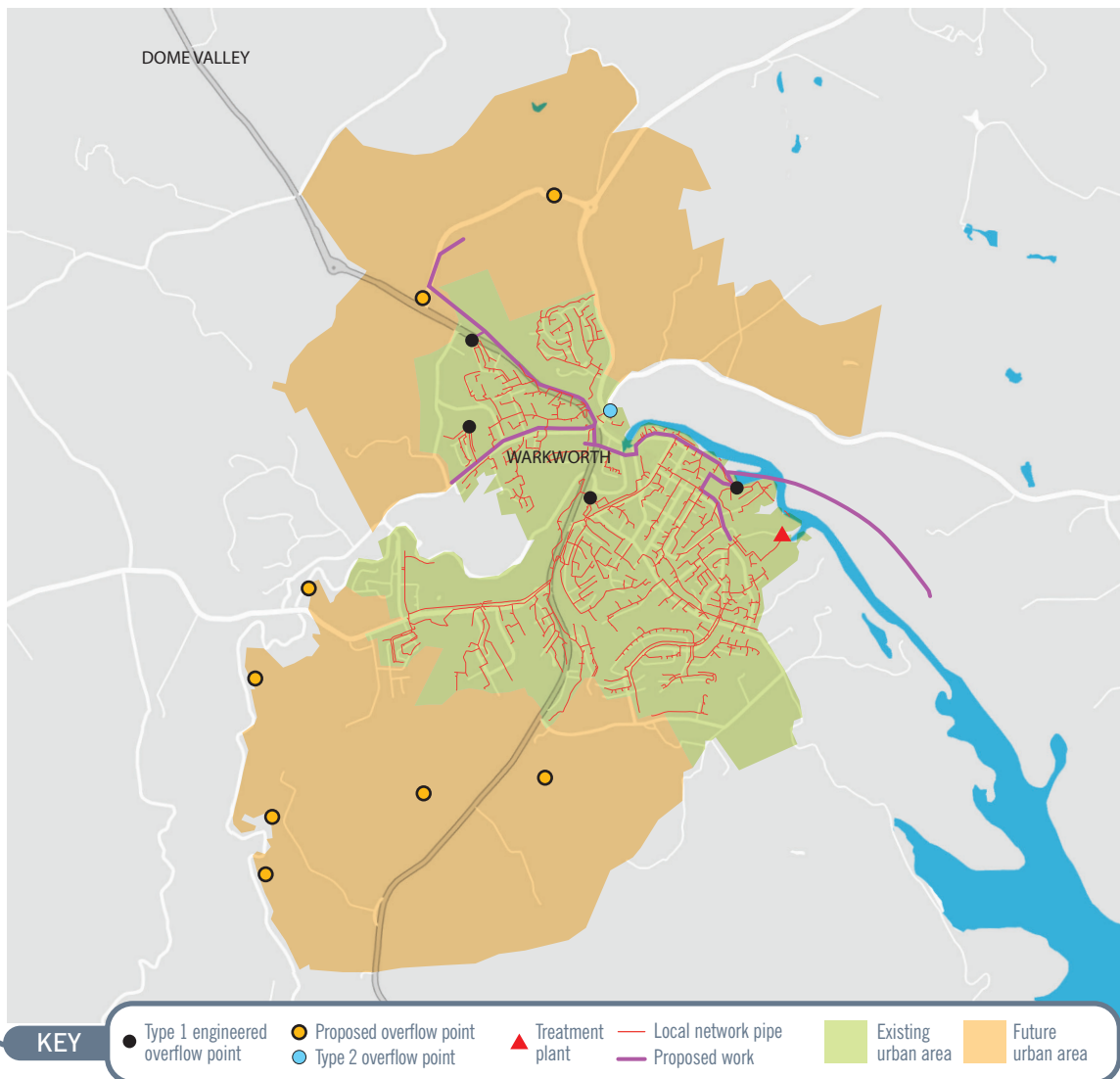
(combined with Snells Beach)

This catchment includes the Mahurangi river which is home to several oyster farmers. This area suffers from more than two spills per year wet weather overflows at Elizabeth Street and Palmer St Pump Station EOPs. Expected growth in this catchment is significant and therefore, the following work is proposed.

## **Work proposed over the next six years**

Upgrade existing network to connect to the Northeast Wastewater scheme which is currently in construction. This scheme includes a wastewater transfer pump station and pipeline from Warkworth to Snells Wastewater Treatment Plant (WWTP), an upgrade Snells WWTP and a new outfall. You can find out more on our website at [watercare.co.nz/About-us/Projects-around-Auckland](http://watercare.co.nz/About-us/Projects-around-Auckland)

We will continue to maintain the network through renewal programmes, repairing ageing infrastructure and carrying out investigation works such as Inflow and Infiltration.



\* **Population:** is an estimate of the population of Watercare customers in the catchment area.

\* **Growth forecast:** population data is provided by Auckland Council and based on the latest projected information, which means that the forecasted dates may vary.