

Wellsford

Prioritisation: low (1)



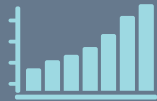
Population*

2,217



Growth forecast*

By 2058,
population
is expected
to grow to
2,420

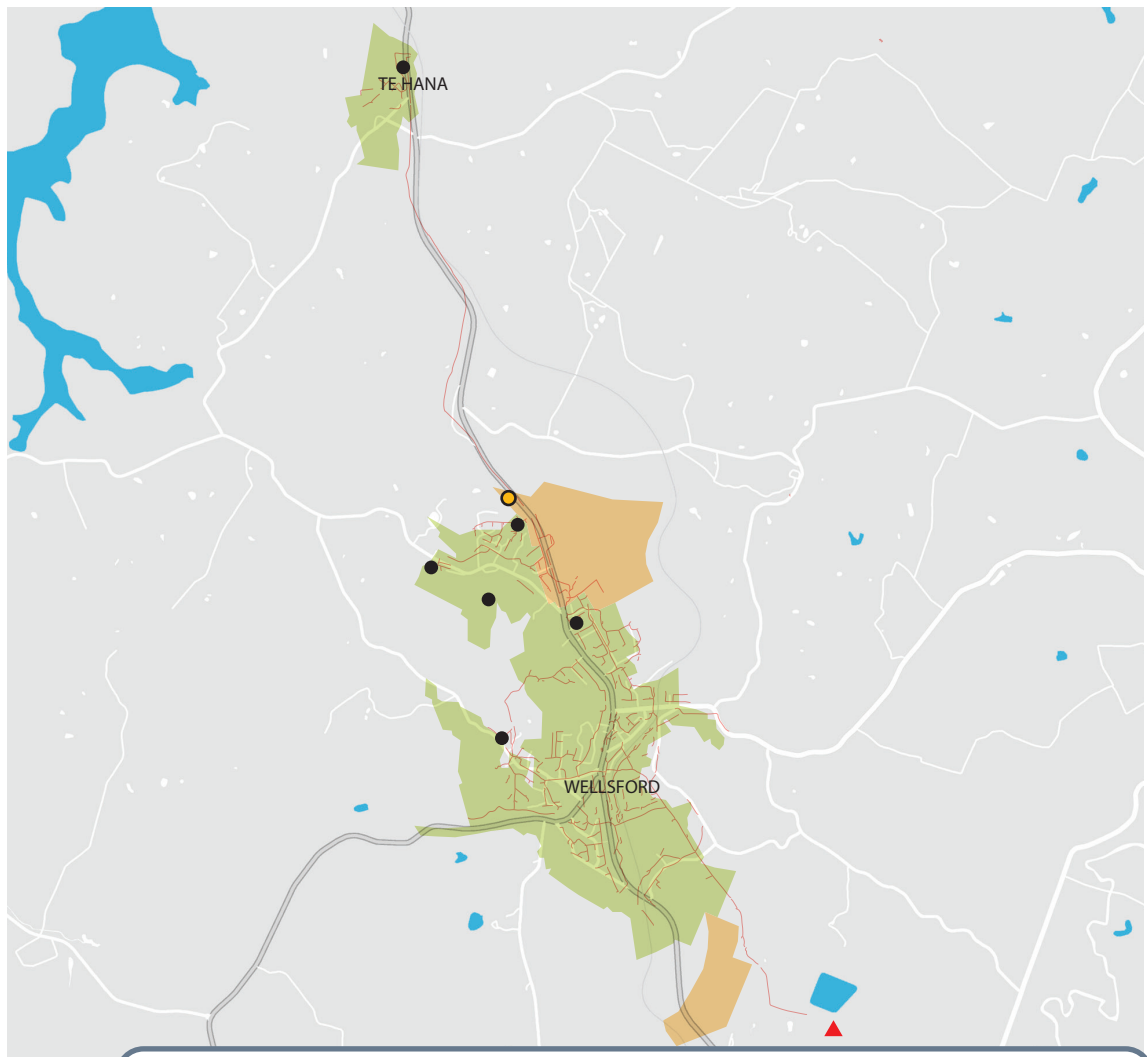


Wellsford is a gateway, with Kaipara Harbour to its west, Mangawhai, Te Arai and Pakiri beaches to the east.

While there are a number of developments in this catchment, there are uncertainties in the scale, location and timing of growth in Wellsford. Therefore, we will continue to monitor growth in this area.

There will be no major proposed work over the next six years.

We will continue to maintain the network through renewal programmes, repairing ageing infrastructure and carrying out investigation works such as Inflow and Infiltration.



KEY

● Type 1 engineered overflow point

● Proposed overflow point



Treatment plant



Local network pipe



Existing urban area



Future urban area

* **Population:** is an estimate of the population of Watercare customers in the catchment area.

* **Growth forecast:** population data is provided by Auckland Council and based on the latest projected information, which means that the forecasted dates may vary.