

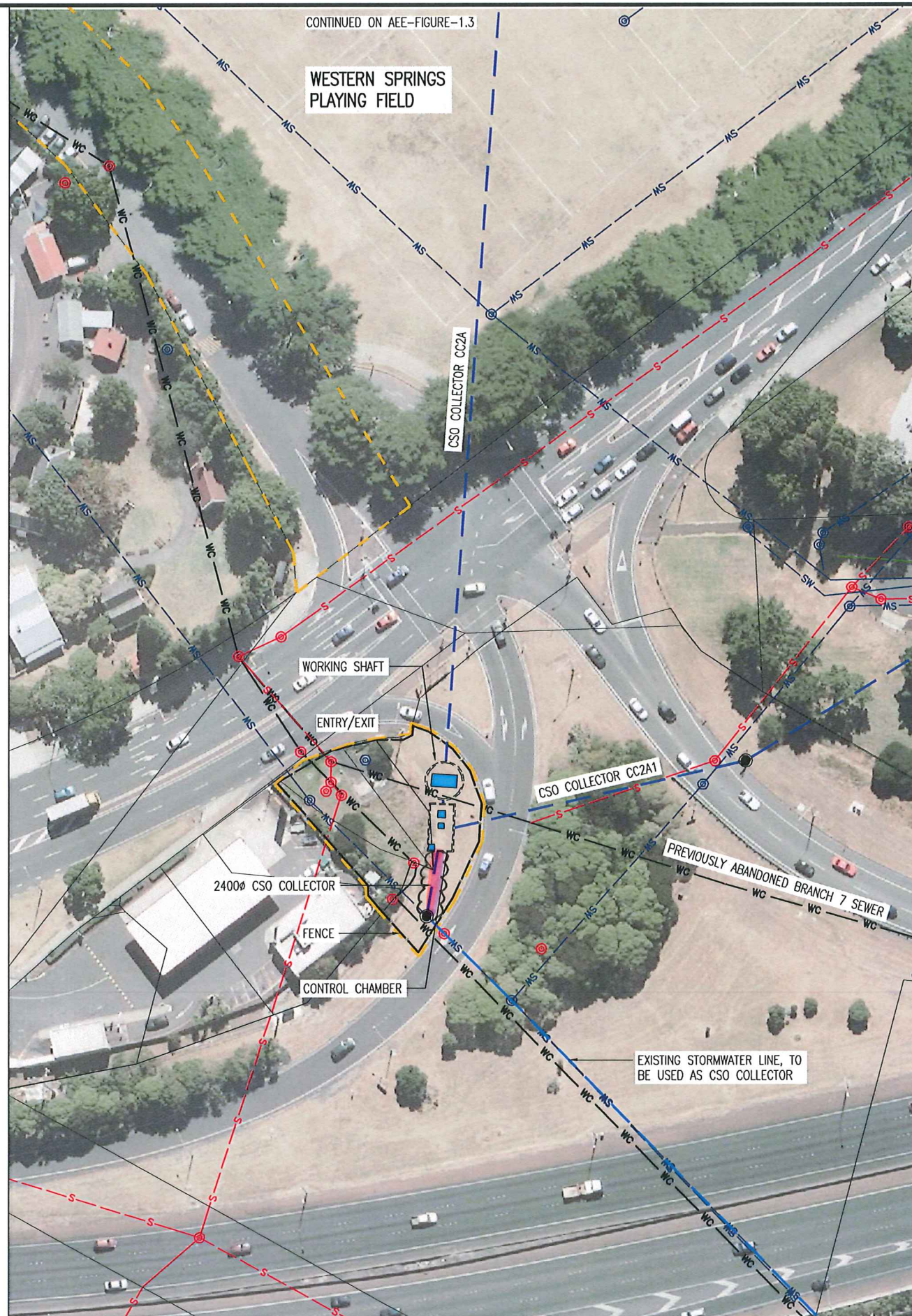
## **Section 92 Response Attachments**

### **Attachment 9 - Trenching Drawings**









#### NOTES:

1. CC2A: THESE WORKS BETWEEN THE CONNECTIONS AT WESTERN SPRINGS OFF RAMP AND THE MAIN WESTERN SPRINGS SITE ARE COVERED IN THE APPLICATIONS AND AEE FOR CENTRAL INTERCEPTOR MAIN PROJECT WORKS.

#### LEGEND

- MAIN TUNNEL
- LINK SEWER
- CSO COLLECTOR
- CONNECTION PIPELINE
- VENTILATION DUCTS
- EXISTING RETICULATION SEWER
- EXISTING TRUNK SEWER
- EXISTING STORMWATER
- PROPOSED DESIGNATION BOUNDARY
- LID/STRUCTURE FLUSH WITH GROUND
- LID/STRUCTURE ABOVE GROUND

PLOT DATE: 10-AUG-12 8:44 AM  
FILE PATH: P:\0538 - Central Interceptor\04. Drawings\AEE\_Main\Consent\General\DWG

				DESIGNED	NL		
				DES. CHECKED	JS	08/12	
				DRAWN	AP		
				DWG. CHECKED	NL	08/12	
				REV'D P.MGR	JS		
A	17/08/12	CONSENT ISSUE	AP	PR	APP'D P.DIR	CC	
ISSUE	DATE	AMENDMENT	BY	APPD.		BY	DATE

OPERATIONS

SITE LAYOUT AND DESIGNS INDICATIVE ONLY AND SUBJECT TO CHANGE DURING DETAILED DESIGN DEVELOPMENT

ASSET MANAGER

AEE AUGUST 2012

waterCare  
services limited

COPYRIGHT - This drawing, the design and concept, remain the exclusive property of Watercare Services Limited and may not be used without approval. Copyright reserved.

CENTRAL INTERCEPTOR  
GENERAL

WESTERN SPRINGS INTERCHANGE - CONSTRUCTION WORKS PLAN

CAD FILE AEE-MAIN-1.4	DATE 26-Jul-12
ORIGINAL SCALE A1	CONTRACT No.
1:1000 A3	0538
DRAWING No.	ISSUE
AEE-MAIN-1.4	A



Plot Date: 10-Aug-12 8:46 AM  
File path: P:\0538 - Central Interceptor\04 Drawings\4.3 Working\AEE\_Concept\General.Dwg

Project No.

				DESIGNED	NL		
				DES. CHECKED	JS	08/12	
				DRAWN	AP		
				DWG. CHECKED	NL	08/12	
				REV'D P.MGR	JS		
A	17/08/12	CONSENT ISSUE	AP	PR	APP'D P.DIR	CC	
ISSUE	DATE	AMENDMENT	BY	APPD.	BY	DATE	

OPERATIONS
ASSET MANAGER

SITE LAYOUT AND DESIGNS INDICATIVE  
ONLY AND SUBJECT TO CHANGE DURING  
DETAILED DESIGN DEVELOPMENT

AEE AUGUST 2012

**waterCare**  
services limited

COPYRIGHT - This drawing, the design and concept, remain the  
exclusive property of WaterCare Services Limited and may not  
be used without approval Copyright reserved.

CENTRAL INTERCEPTOR  
GENERAL

MT ALBERT WAR MEMORIAL RESERVE (AS1) - CONSTRUCTION WORKS PLAN

CAD FILE AEE-MAIN-2.2	DATE 26-Jul-12
ORIGINAL SCALE A1	CONTRACT No.
1:1000 A3	0538
DRAWING No.	ISSUE
AEE-MAIN-2.2	A



#### LEGEND

- MAIN TUNNEL
- LINK SEWER
- CSO COLLECTOR
- CONNECTION PIPELINE
- VENTILATION DUCTS
- EXISTING RETICULATION SEWER
- EXISTING TRUNK SEWER
- EXISTING STORMWATER
- PROPOSED DESIGNATION BOUNDARY
- LID/STRUCTURE FLUSH WITH GROUND
- LID/STRUCTURE ABOVE GROUND
- PROPOSED NOISE BARRIER



Pld Date: 10-Aug-12 9:01 AM  
File Path: P:\0338 - Central Interceptor\04 Drawings\4.3 Working\AEE\Consent\General\04g

Project No.



### TYPICAL LAYOUT ELEMENTS

1	CONTRACTORS MAIN OFFICE
2	ENGINEERS MAIN OFFICE
3	PARKING
4	MAIN WORK SHOP
5	COMPRESSOR/GENERATOR
6	SEGMENT STORAGE AREA
7	SPOIL STORAGE AREA
8	WHEEL WASH
9	STAFF CANTEEN
10	CONTAINERS
11	CONTRACTORS ELECTRICAL SUBSTATION
12	WATER TREATMENT PLANT
13	TEMPORARY SHAFT HEAD SHED/NOISE ENCLOSURE

NOTE: CONSTRUCTION SITE LAYOUT IS INDICATIVE ONLY. ACTUAL LAYOUT WILL BE DETERMINED BY CONTRACTOR.

### LEGEND

	MAIN TUNNEL
	LINK SEWER
	CSO COLLECTOR
	CONNECTION PIPELINE
	VENTILATION DUCTS
	EXISTING RETICULATION SEWER
	EXISTING TRUNK SEWER
	EXISTING STORMWATER
	PROPOSED DESIGNATION BOUNDARY
	LID/STRUCTURE FLUSH WITH GROUND
	LID/STRUCTURE ABOVE GROUND
	NOISE ENCLOSURE
	PROPOSED NOISE BARRIER



DESIGNED	NL				
DES. CHECKED	JS		08/12		
DRAWN	AP				
DWG. CHECKED	NL		08/12		
REV'D P.MGR	JS				
APP'D P.DIR	CC				
BY					
DATE					

OPERATIONS  
ASSET MANAGER

SITE LAYOUT AND DESIGNS INDICATIVE ONLY AND SUBJECT TO CHANGE DURING DETAILED DESIGN DEVELOPMENT

AEE AUGUST 2012

**waterCare**  
services limited

COPYRIGHT - This drawing, the design and concept, remain the exclusive property of Watercare Services Limited and may not be used without approval. Copyright reserved.

**CENTRAL INTERCEPTOR  
GENERAL**

**MAY ROAD (WS2) - CONSTRUCTION WORKS PLAN**

CAD FILE AEE-MAIN-6.2	DATE 23-May-12
ORIGINAL SCALE A1	CONTRACT No.
1:1000 A3	0538
DRAWING No.	ISSUE
AEE-MAIN-6.2	A







Plot Date: 10-Aug-12 9:26 AM  
File path: P:\0538 - Central Interceptor\04 Drawings\4.3 Working\AEE\_Consent\General.Dwg

Project No.

				DESIGNED	NL		
				DES. CHECKED	JS	08/12	
				DRAWN	AP		
				DWG. CHECKED	NL	08/12	
				REV'D P.MGR	JS		
				APP'D P.DIR	CC		
A	17/08/12	CONSENT ISSUE	AP	PR	APP'D		
ISSUE	DATE	AMENDMENT	BY	APPD.	BY	DATE	ASSET MANAGER

OPERATIONS

SITE LAYOUT AND DESIGNS INDICATIVE ONLY AND SUBJECT TO CHANGE DURING DETAILED DESIGN DEVELOPMENT

AEE AUGUST 2012

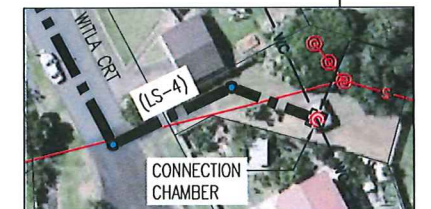
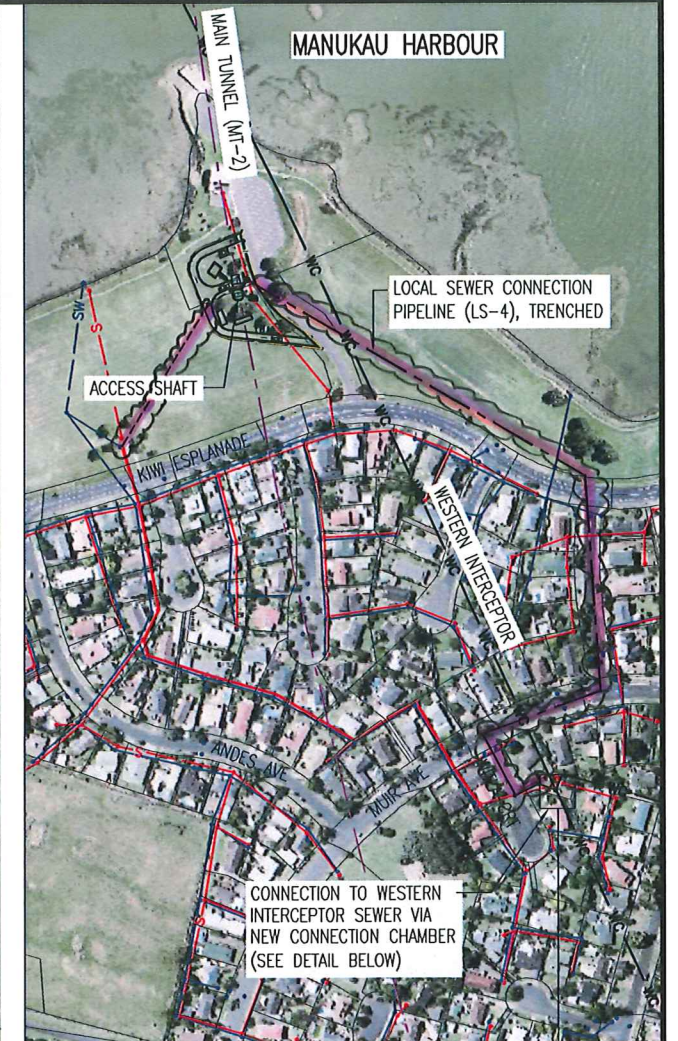
**waterCare**  
services limited

COPYRIGHT - This drawing, the design and concept, remain the exclusive property of Watercare Services Limited and may not be used without approval. Copyright reserved.

CENTRAL INTERCEPTOR  
GENERAL

KIWI ESPLANADE (AS7) - CONSTRUCTION WORKS PLAN

CAD FILE AEE-MAIN-9.2	DATE 26-Jul-12
ORIGINAL SCALE A1	CONTRACT No.
1:1000 A3	0538
DRAWING No.	ISSUE
AEE-MAIN-9.2	A



#### LEGEND

- MAIN TUNNEL
- LINK SEWER
- CSO COLLECTOR
- CONNECTION PIPELINE
- VENTILATION DUCTS
- EXISTING RETICULATION SEWER
- EXISTING TRUNK SEWER
- EXISTING STORMWATER
- PROPOSED DESIGNATION BOUNDARY
- LID/STRUCTURE FLUSH WITH GROUND
- LID/STRUCTURE ABOVE GROUND



Plot Date: 10-Aug-12 9:30 AM  
File path: P:\0538 - Central Interceptor\04 Drawings\4.3 Working\AEE\_Main\_General\General.Dwg

Project No.

					DESIGNED	NL		
					DES. CHECKED	JS	08/12	
					DRAWN	AP	08/12	
					DWG. CHECKED	NL		
					REV'D P.MGR	JS		
A	17/08/12	CONSENT ISSUE	AP	PR	APP'D P.DIR	CC		
ISSUE	DATE	AMENDMENT	BY	APPD.		BY	DATE	

OPERATIONS  
ASSET MANAGER

SITE LAYOUT AND DESIGNS INDICATIVE  
ONLY AND SUBJECT TO CHANGE DURING  
DETAILED DESIGN DEVELOPMENT

AEE AUGUST 2012

**waterCare**  
services limited

COPYRIGHT - This drawing, the design and concept, remain the  
exclusive property of Watercare Services Limited and may not  
be used without approval. Copyright reserved.

**CENTRAL INTERCEPTOR  
GENERAL**  
MOTIONS ROAD (L1S1) - CONSTRUCTION WORKS PLAN

CAD FILE AEE-MAIN-11.2		DATE 26-Jul-12	
ORIGINAL SCALE A1		CONTRACT No.	
1:1000 A3		0538	
DRAWING No.		ISSUE	
AEE-MAIN-11.2		A	



Plot Date: 10-Aug-12 9:33 AM  
File path: P:\0538 - Central Interceptor\04. Drawings\4.3 Working\AEE\_Concept\General\DWG

Project No.

					DESIGNED	NL		
					DES. CHECKED	JS	08/12	
					DRAWN	AP		
					DWG. CHECKED	NL	08/12	
					REV'D P.MGR	JS		
A	17/08/12	CONSENT ISSUE	AP	PR	APP'D P.DIR	CC		
ISSUE	DATE	AMENDMENT	BY	APPD.		BY	DATE	

	OPERATIONS
	ASSET MANAGER

SITE LAYOUT AND DESIGNS INDICATIVE  
ONLY AND SUBJECT TO CHANGE DURING  
DETAILED DESIGN DEVELOPMENT

AEE AUGUST 2012

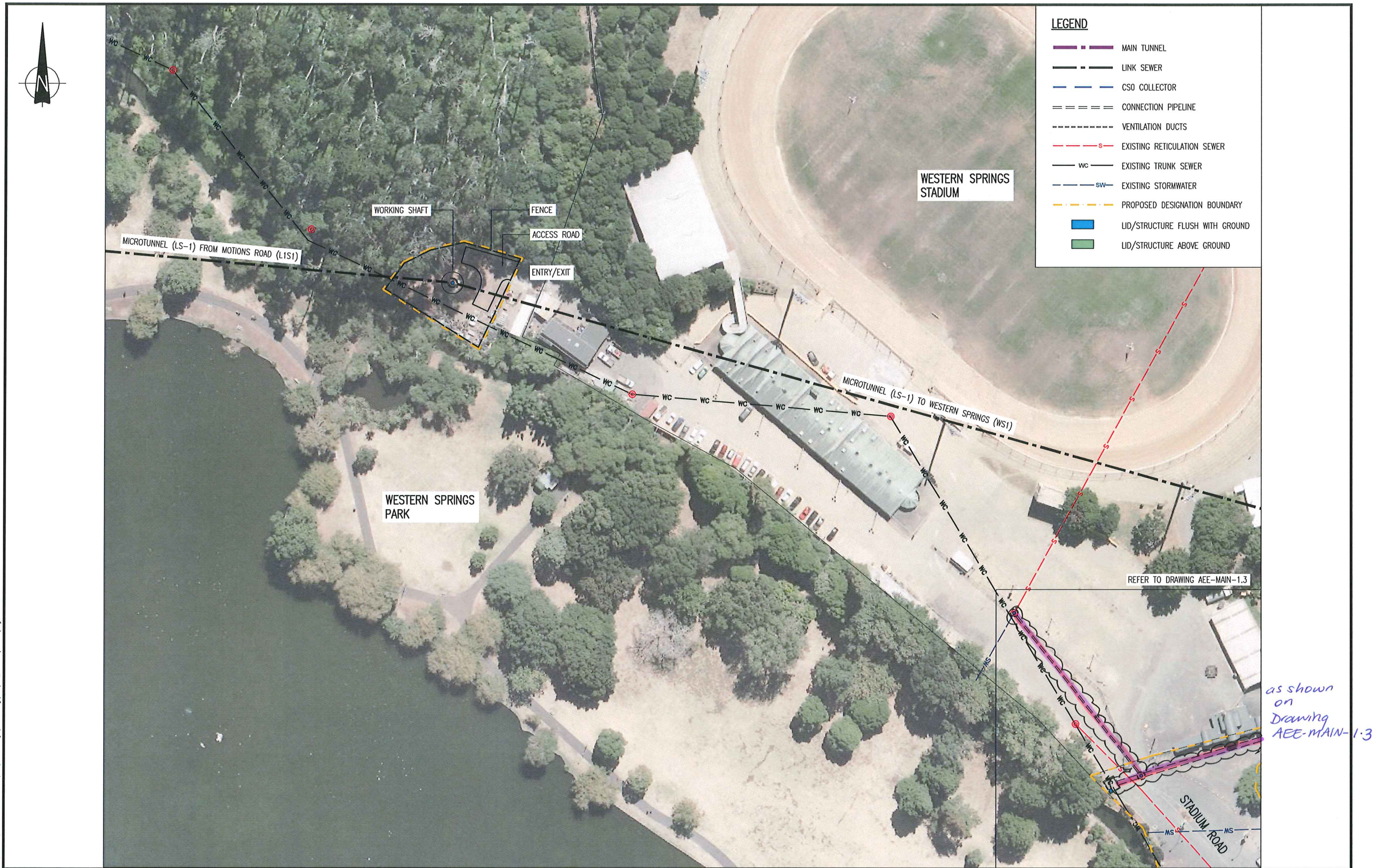
**waterCare**  
services limited

COPYRIGHT - This drawing, the design and concept, remain the  
exclusive property of Watercare Services Limited and may not  
be used without approval. Copyright reserved.

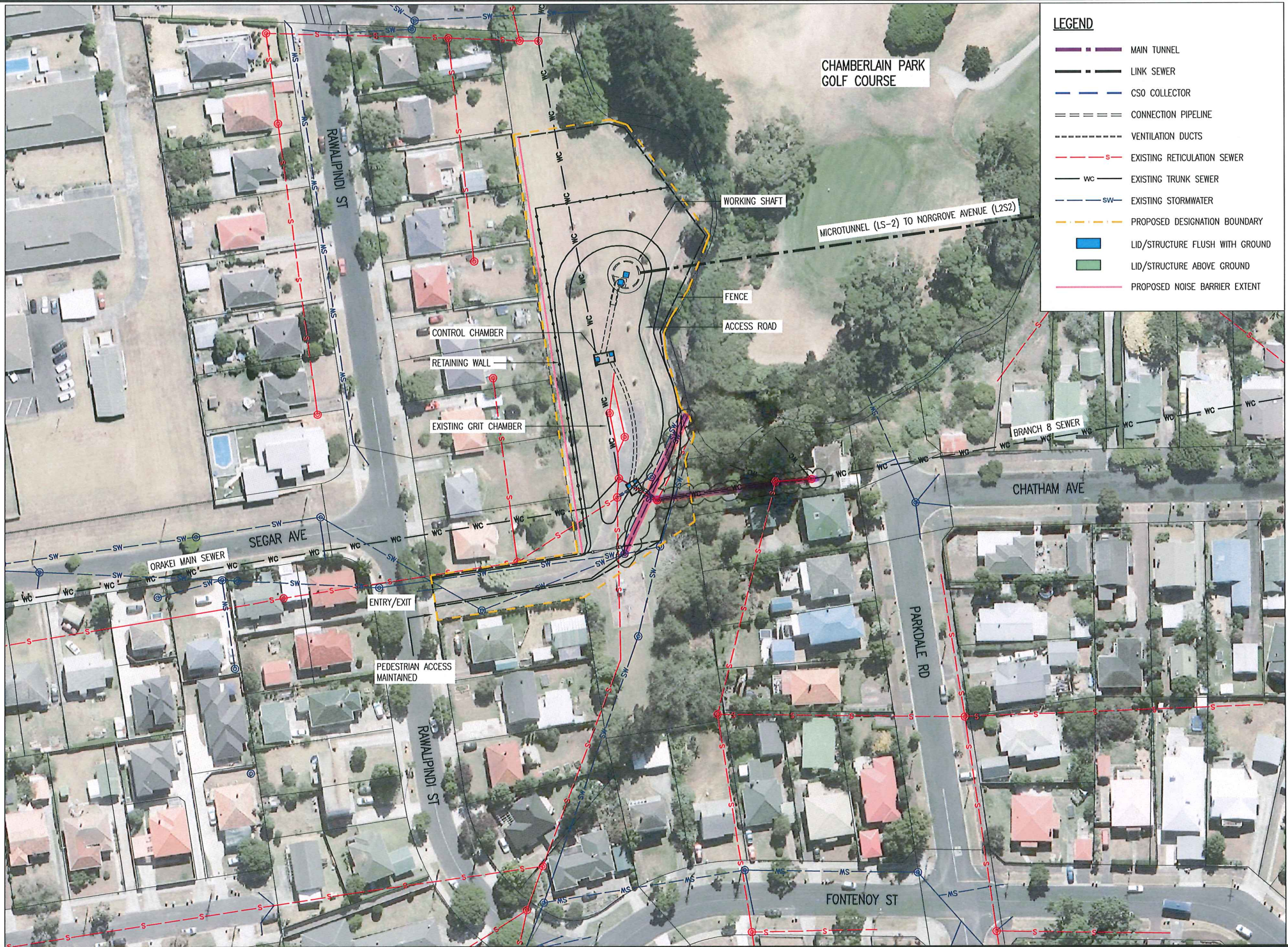
CENTRAL INTERCEPTOR  
GENERAL

WESTERN SPRINGS DEPOT (L1S2) - CONSTRUCTION WORKS PLAN

CAD FILE AEE-MAIN-12.2	DATE 26-Jul-12
ORIGINAL SCALE A1	CONTRACT No.
1:1000 A3	0538
DRAWING No.	ISSUE
AEE-MAIN-12.2	A







# LEGEND

- MAIN TUNNEL
- LINK SEWER
- CSO COLLECTOR
- CONNECTION PIPELINE
- VENTILATION DUCTS
- EXISTING RETICULATION SEWER
- EXISTING TRUNK SEWER
- EXISTING STORMWATER
- PROPOSED DESIGNATION BOUNDARY
- LID/STRUCTURE FLUSH WITH GROUND
- LID/STRUCTURE ABOVE GROUND
- PROPOSED NOISE BARRIER EXTENT

Plot Date: 10-Aug-12 9:34 AM  
File path: P:\0538 - Central Interceptor\04 Drawings\4.3 Working\AEE\Consent\General\Draw

DESIGNED	NL	08/12
DES. CHECKED	JS	08/12
DRAWN	AP	
DWG. CHECKED	NL	08/12
REV'D P.MGR	JS	
APP'D P.DIR	CC	
ISSUE	DATE	AMENDMENT
A	17/08/12	CONSENT ISSUE
BY	APPD.	BY
AP	PR	DATE

OPERATIONS  
ASSET MANAGER

SITE LAYOUT AND DESIGNS INDICATIVE  
ONLY AND SUBJECT TO CHANGE DURING  
DETAILED DESIGN DEVELOPMENT

AEE AUGUST 2012

waterCare  
services limited

COPYRIGHT - This drawing, the design and concept, remain the  
exclusive property of Watercare Services Limited and may not  
be used without approval. Copyright reserved.

CENTRAL INTERCEPTOR  
GENERAL

RAWALPINDI RESERVE (L2S1) - CONSTRUCTION WORKS PLAN

CAD FILE AEE-MAIN-13.2	DATE 26-Jul-12
ORIGINAL SCALE A1	CONTRACT No.
1:1000 A3	0538
DRAWING No.	ISSUE
AEE-MAIN-13.2	A





#### LEGEND

- MAIN TUNNEL
- LINK SEWER
- CSO COLLECTOR
- CONNECTION PIPELINE
- VENTILATION DUCTS
- EXISTING RETICULATION SEWER
- WC EXISTING TRUNK SEWER
- SW EXISTING STORMWATER
- PROPOSED DESIGNATION BOUNDARY
- LID/STRUCTURE FLUSH WITH GROUND
- LID/STRUCTURE ABOVE GROUND
- PROPOSED NOISE BARRIER
- MOBILE/TEMPORARY NOISE BARRIER

#### NOTES:

1. MOBILE NOISE BARRIER USED TO SCREEN LOCAL WORKS AT REAR OF VERONA ST PROPERTIES.

Plot Date: 10-Aug-12 9:36 AM  
File path: P:\0538 - Central Interceptor\04. Drawings\04.3 Working\AEE\_Main\General\Draw

Project No.

				DESIGNED	NL		
				DES. CHECKED	JS	08/12	
				DRAWN	AP		
				DWG. CHECKED	NL	08/12	
				REV'D P.MGR	JS		
A	17/08/12	CONSENT ISSUE	AP	PR	APP'D P.DIR	CC	
ISSUE	DATE	AMENDMENT	BY	APPD.		BY	DATE

OPERATIONS

ASSET MANAGER

SITE LAYOUT AND DESIGNS INDICATIVE ONLY AND SUBJECT TO CHANGE DURING DETAILED DESIGN DEVELOPMENT

AEE AUGUST 2012

**waterCare**  
services limited

COPYRIGHT - This drawing, the design and concept, remain the exclusive property of WaterCare Services Limited and may not be used without approval. Copyright reserved.

CENTRAL INTERCEPTOR  
GENERAL

NORGROVE AVENUE (L2S2) - CONSTRUCTION WORKS PLAN

CAD FILE AEE-MAIN-14.2	DATE 26-Jul-12
ORIGINAL SCALE A1	CONTRACT No.
1:1000 A3	0538
DRAWING No.	ISSUE
AEE-MAIN-14.2	A



Plot Date: 10-Aug-12 9:37 AM  
File path: P:\0538 - Central Interceptor\04 Drawings\4.3 Working\AEE\Consent\General\DWG

Project No.

				DESIGNED	NL		
				DES. CHECKED	JS	08/12	
				DRAWN	AP		
				DWG. CHECKED	NL	08/12	
				REV'D P.MGR	JS		
				APP'D P.DIR	CC		
A	17/08/12	CONSENT ISSUE	AP	PR			
ISSUE	DATE	AMENDMENT	BY	APPD.	BY	DATE	

OPERATIONS  
ASSET MANAGER

SITE LAYOUT AND DESIGNS INDICATIVE  
ONLY AND SUBJECT TO CHANGE DURING  
DETAILED DESIGN DEVELOPMENT

AEE AUGUST 2012

**waterCare**  
services limited

COPYRIGHT - This drawing, the design and concept, remain the  
exclusive property of Watercare Services Limited and may not  
be used without approval. Copyright reserved.

CENTRAL INTERCEPTOR  
GENERAL

PS25 (L3S1) - CONSTRUCTION WORKS PLAN

#### LEGEND

- MAIN TUNNEL
- LINK SEWER
- CSO COLLECTOR
- CONNECTION PIPELINE
- VENTILATION DUCTS
- EXISTING RETICULATION SEWER
- EXISTING TRUNK SEWER
- EXISTING STORMWATER
- PROPOSED DESIGNATION BOUNDARY
- LID/STRUCTURE FLUSH WITH GROUND
- LID/STRUCTURE ABOVE GROUND

CAD FILE AEE-MAIN-15.2	DATE 26-Jul-12
ORIGINAL SCALE A1	CONTRACT No.
1:1000 A3	0538
DRAWING No.	ISSUE
AEE-MAIN-15.2	A



Plot Date: 10-Aug-12 9:39 AM  
File path: P:\0538 - Central Interceptor\04 Drawings\A3 Working\AEE\_General\General\0wg

Project No.

				DESIGNED	NL		
				DES. CHECKED	JS	08/12	
				DRAWN	AP		
				DWG. CHECKED	NL	08/12	
				REV'D P.MGR	JS		
A	17/08/12	CONSENT ISSUE	AP	PR	APP'D P.DIR	CC	
ISSUE	DATE	AMENDMENT	BY	APPD.	BY	DATE	

OPERATIONS  
ASSET MANAGER

SITE LAYOUT AND DESIGNS INDICATIVE  
ONLY AND SUBJECT TO CHANGE DURING  
DETAILED DESIGN DEVELOPMENT

AEE AUGUST 2012

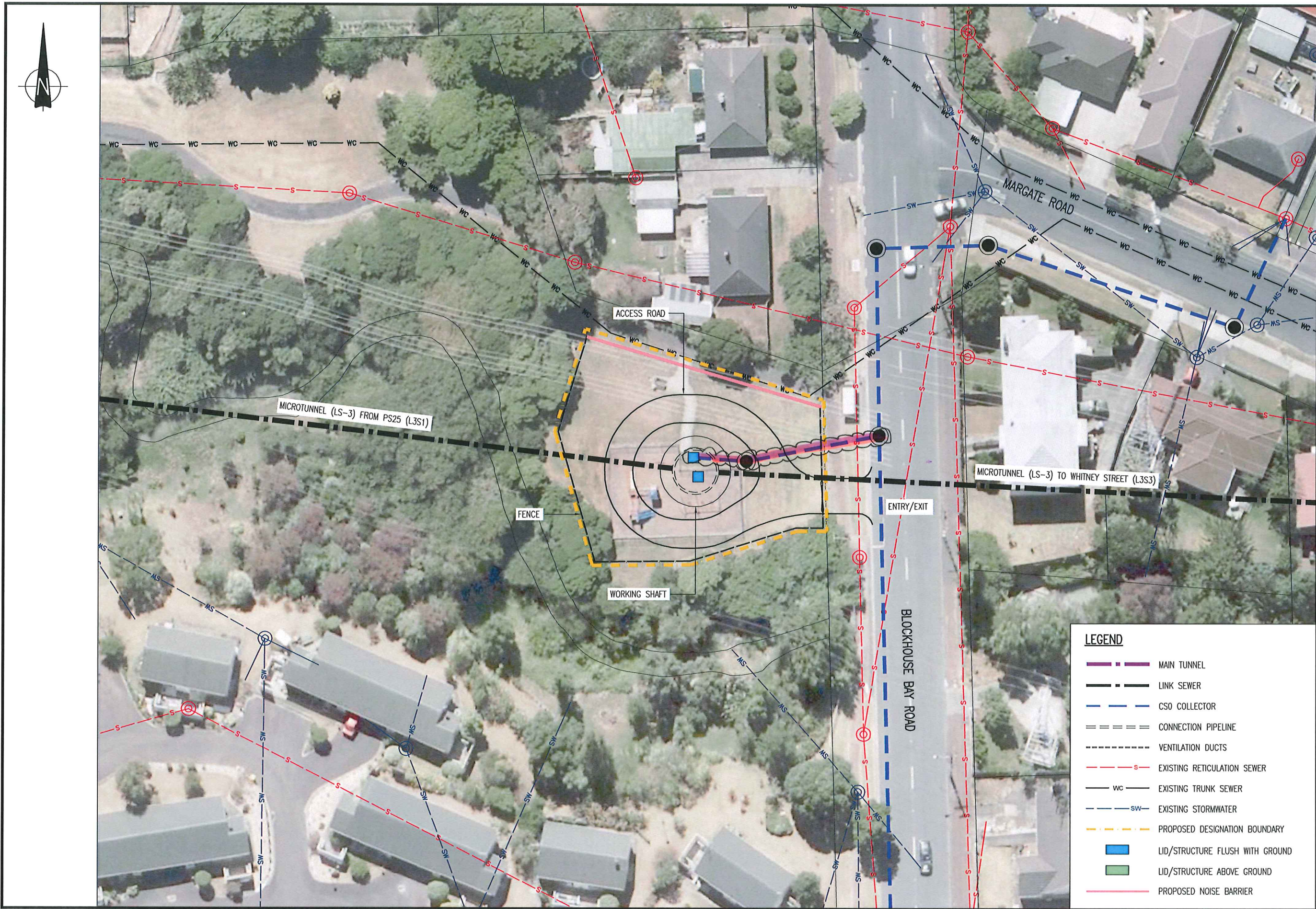
**waterCare**  
services limited

COPYRIGHT - This drawing, the design and concept, remain the  
exclusive property of Watercare Services Limited and may not  
be used without approval. Copyright reserved.

CENTRAL INTERCEPTOR  
GENERAL

MIRANDA RESERVE (L3S2) - CONSTRUCTION WORKS PLAN

CAD FILE AEE-MAIN-16.2	DATE 26-Jul-12
ORIGINAL SCALE A1	CONTRACT No.
1:500 A3	0538
DRAWING No.	ISSUE
AEE-MAIN-16.2	A





Plot Date: 10-Aug-12 9:40 AM  
File path: P:\0538 - Central Interceptor\04 Drawings\1-3 Working\AEE\Consent\General.Dwg

Project No.

				DESIGNED	NL		
				DES. CHECKED	JS	08/12	
				DRAWN	AP		
				DWG. CHECKED	NL	08/12	
				REV'D P.MGR	JS		
				APP'D P.DIR	CC		
A	17/08/12	CONSENT ISSUE	AP	PR	APP'D		
ISSUE	DATE	AMENDMENT	BY	APPD.		BY	DATE

OPERATIONS  
ASSET MANAGER

SITE LAYOUT AND DESIGNS INDICATIVE  
ONLY AND SUBJECT TO CHANGE DURING  
DETAILED DESIGN DEVELOPMENT

AEE AUGUST 2012

**waterCare**  
services limited

COPYRIGHT - This drawing, the design and concept, remain the  
exclusive property of Watercare Services Limited and may not  
be used without approval. Copyright reserved.

CENTRAL INTERCEPTOR  
GENERAL

WHITNEY STREET (L3S3) - CONSTRUCTION WORKS PLAN

CAD FILE AEE-MAIN-17.2	DATE 26-Jul-12
ORIGINAL SCALE A1	CONTRACT No.
1:1000 A3	0538
DRAWING No.	ISSUE
AEE-MAIN-17.2	A





Plot Date: 10-Aug-12 9:43 AM  
File path: P:\0538 - Central Interceptor\04 Drawings\4.3 Working\AEE\Consent\General\Org

Project No.

				DESIGNED	NL		
				DES. CHECKED	JS	08/12	
				DRAWN	AP		
				DWG. CHECKED	NL	08/12	
				REV'D P.MGR	JS		
				APP'D P.DIR	CC		
A	17/08/12	CONSENT ISSUE	AP	PR			
ISSUE	DATE	AMENDMENT	BY	APPD.	BY	DATE	

OPERATIONS

ASSET MANAGER

SITE LAYOUT AND DESIGNS INDICATIVE  
ONLY AND SUBJECT TO CHANGE DURING  
DETAILED DESIGN DEVELOPMENT

AEE AUGUST 2012

**waterCare**  
services limited

COPYRIGHT - This drawing, the design and concept, remain the  
exclusive property of Watercare Services Limited and may not  
be used without approval. Copyright reserved.

CENTRAL INTERCEPTOR  
GENERAL

HAYCOCK AVENUE (L3S5) - CONSTRUCTION WORKS PLAN

CAD FILE AEE-MAIN-19.2	DATE 26-Jul-12
ORIGINAL SCALE A1	CONTRACT No.
1:1000 A3	0538
DRAWING No.	ISSUE
AEE-MAIN-19.2	A



#### LEGEND

- MAIN TUNNEL
- LINK SEWER
- CSO COLLECTOR
- CONNECTION PIPELINE
- VENTILATION DUCTS
- EXISTING RETICULATION SEWER
- EXISTING TRUNK SEWER
- EXISTING STORMWATER
- PROPOSED DESIGNATION BOUNDARY
- LID/STRUCTURE FLUSH WITH GROUND
- LID/STRUCTURE ABOVE GROUND
- PROPOSED NOISE BARRIER