

CENTRAL INTERCEPTOR BULLETIN

Haycock Avenue site 2 – 4 Haycock Avenue, Mt Roskill

This is a special edition of our bulletin to give you an update on our new Haycock Avenue construction site. With the move to Alert Level 3, work will shortly begin on site.

We will start work at Haycock Avenue next Monday, 4 May. Our teams can safely undertake work at the site under the new guidelines set by the government for Level 3. Extensive safety measures will be put in place to keep workers and the wider community healthy and safe.

About the Haycock Avenue construction site

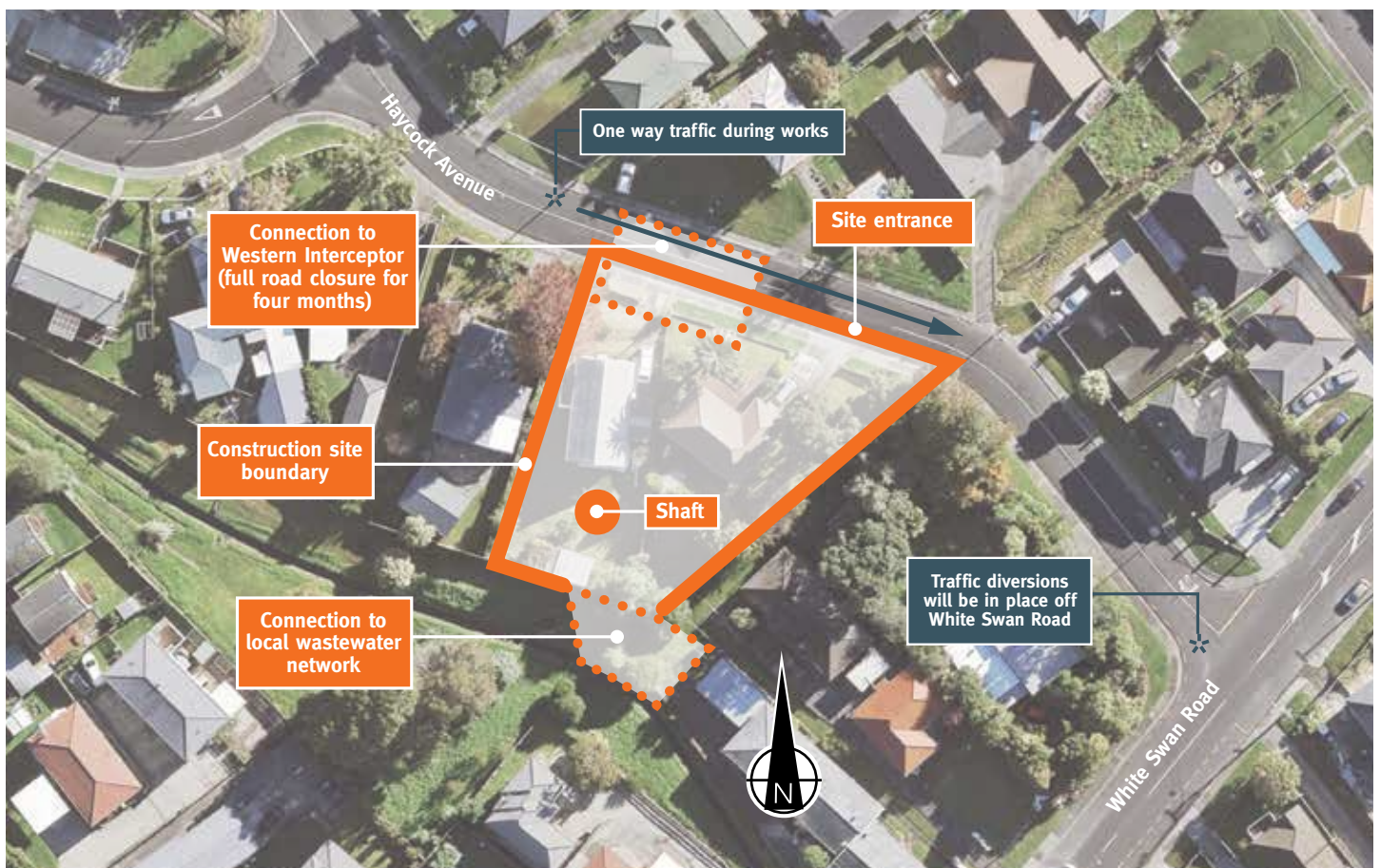
The Haycock Avenue shaft site is one of five sites we are building along a connector tunnel. This tunnel then feeds into the main Central Interceptor tunnel at the May Road site. The purpose of this section is to divert flows from our current older Western network into the new Central Interceptor tunnel which takes the wastewater to Māngere Wastewater Treatment Plant.

The construction at this site will include building of a shaft and diversion chamber connection to both the Western Interceptor and the local network.

Getting started on site

Our first activities will be to set up temporary traffic management, temporary fencing around the site and carry out initial survey works. Deconstructing and removing the buildings at 2 and 4 Haycock Avenue will start on 11 May and finish in mid-June.

We will also start on the vegetation work which involves removing some trees and vegetation. This work will take approximately five days and will be monitored to ensure the noise limits meet Auckland Council requirements.



Managing traffic during construction

- During the construction period, the road will be one-way with traffic able to exit only from Haycock Avenue to White Swan Road
- During the creation of the diversion chamber and connection to the Western Interceptor, the road will need to be closed for four months. Traffic diversions and signage to direct traffic will be in place during this time
- Access to driveways will be maintained. You may experience short delays for entering/exiting driveways as trucks are operating in the area
- Parking restrictions will be in place along a section of Haycock Avenue to allow for truck movements. Please park away from the work area
- Truck movements will be restricted Monday to Friday during school terms between 8:15 and 9:00 am and 2:45 and 3:00pm



Updated work programme

This is the revised timetable showing the main activities for the site. We will keep you informed if there are any changes.



Extra health and safety measures

On the Central Interceptor Project, we have a strong emphasis on health and safety. With the current health situation, we are bringing in extra measures and taking further precautions. All our construction sites are following a five-step guide to safe work, including:

- Ensuring all additional health and safety measures are put in place
- Assessing our team fitness and safety before starting work
- Ensuring only relevant staff are working on site
- Ramping up our cleaning and disinfecting practices
- Ensuring we are sticking to our bubbles and practicing appropriate social distancing

Any questions?

For up to date information please see our website:

www.centralinterceptor.co.nz

You can also email us at:

ciproject@water.co.nz

Or phone:

0800 GAJV 02 (0800425802)

Engage with us (digitally!)

We would normally be out in the community to talk to you face-to-face about the construction works. As we are currently unable to, we invite you to send us an email or video with your questions. We will post answers to frequently asked questions on our website and over our social media channels.

Follow us on social media

