

# CENTRAL INTERCEPTOR BULLETIN

## Māngere Pump Station site, Greenwood Rd, Māngere

This is a special edition of our bulletin to give you an update on the Māngere Pump Station construction works. With the move to Alert Level 3, work will shortly begin again on site.

The Māngere Pump Station site will re-open on Tuesday, 28 April 2020. Our teams can safely undertake work at the site under the new guidelines set by the government for Level 3. Extensive safety measures will be put in place to keep workers and the wider community healthy and safe.

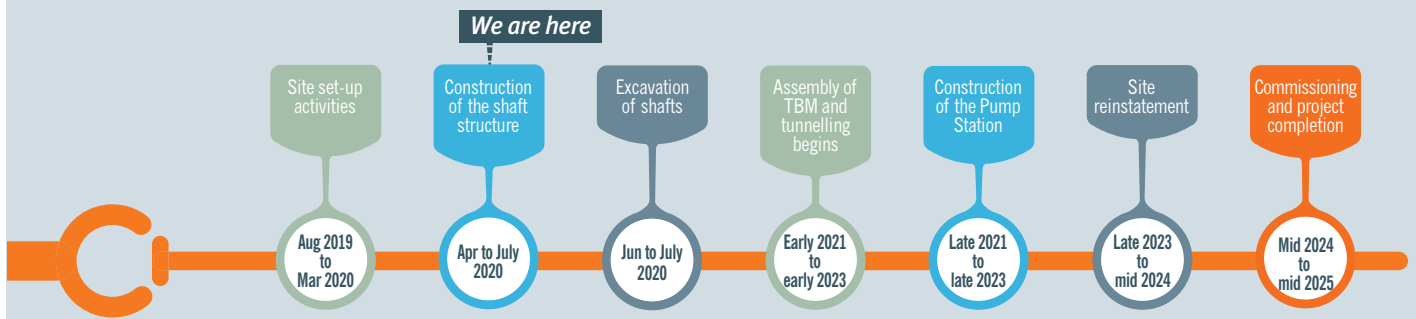
Prior to reopening, a small team may be on site preparing to ensure our staff can return to work safely. You can expect to see and hear an increase in the number of people and traffic on site following four weeks of shut down.

The first activity is to complete the diaphragm wall construction. Following this, construction of the rising main works begins, including excavating a 5m wide by 4m deep trench and installing two 1.4 metre diameter pipes. These pipes connect to the Māngere Wastewater Treatment Plant network.

For public safety, the coastal walkway along the western side of the coastal haul road will be closed for approximately six weeks from mid-July. Detailed signage will be posted ahead of time.

## Updated work programme

This is the revised timetable showing the main activities for the site, due to the impact of suspending work during Level 4. We will keep you informed if there any further changes.



## Extra health and safety measures

On the Central Interceptor Project, we have a strong emphasis on health and safety. With the current health situation, we are bringing in extra measures and taking further precautions. All our construction sites are following a five-step guide to safe work, including:

Ensuring all additional health and safety measures are put in place

Assessing our team fitness and safety before starting work

Ensuring only relevant staff are working on site

Ramping up our cleaning and disinfecting practices

Ensuring we are sticking to our bubbles and practicing appropriate social distancing

### Any questions?

For up to date information please see our website:

[www.centralinterceptor.co.nz](http://www.centralinterceptor.co.nz)

You can also email us at:

[ciproject@water.co.nz](mailto:ciproject@water.co.nz)

Or phone:

0800 GAJV 02 (0800425802)

[ [www.centralinterceptor.co.nz](http://www.centralinterceptor.co.nz) ]



### Engage with us (digitally!)

We would normally be out in the community to talk to you face-to-face about the construction works. As we are currently unable to, we invite you to send us an email or video with your questions. We will post answers to frequently asked questions on our website and over our social media channels.



Follow us on social media Facebook Instagram LinkedIn