

CENTRAL INTERCEPTOR BULLETIN

Holiday edition

Keith Hay Park site



Season's greetings!

Our 2021 Highlights on the CI Project

Another year has passed and we are tracking well on constructing New Zealand's largest wastewater tunnel, Watercare's Central Interceptor. It has been an interesting year, with many challenges, but we have managed to reach a few milestones.

The launch of Hiwa-i-te-Rangi

In July we successfully launched our Tunnel Boring Machine (TBM), Hiwa-i-te-Rangi, on her journey underground. We hosted several open day events for this milestone, which saw 2,000 visitors to our main construction site at Māngere Pump Station.

It was great to see mana whenua, local elected members, industry leaders and the community come along to gain a better understanding of the work we have been doing and to see just how large this project is. Visitors were able to get up close to the equipment we're using on the project and view the 38m deep shaft from a specially built platform.



Alongside construction equipment we assembled a full-sized tunnel segment ring



Visitors could view both shafts from the specially-built platform



Visitors helped with our colourful mural

COVID-19 – Disruptions

During the recent COVID-19 level 4 lockdown, our above ground activities had to stop. However, due to the nature of tunnelling our two TBMs kept moving forward. This ensured the stability of the tunnel and the safety of our workers. The recent lockdown has not only impacted our project timelines but also the wider construction industry with increased pressure on our product supply chains.

Quieter for the Festive Season

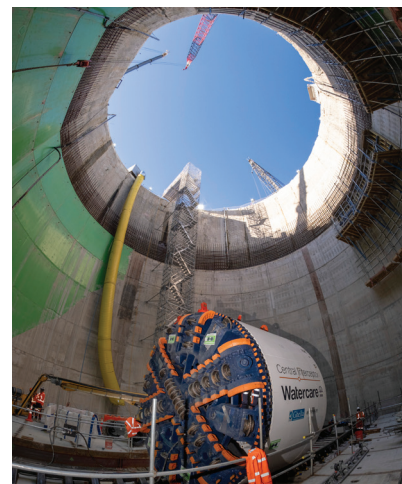
Our holiday shutdown period is from 24 December 2021 until 10 January 2022, enabling our staff to spend the holidays with their families and friends. You may still see some staff on site undertaking maintenance and essential work.

We will also continue to carry out routine security checks over the holiday period. We wish you all a joyful holiday break and a happy New Year from the Central Interceptor team.

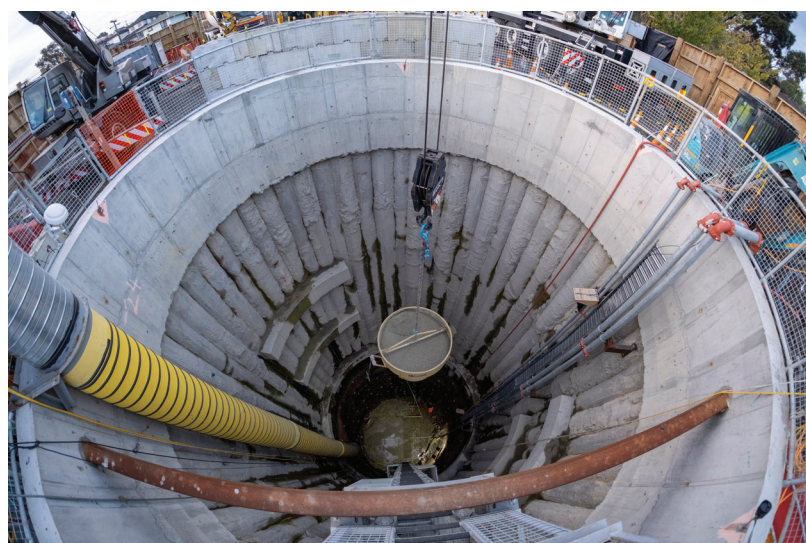




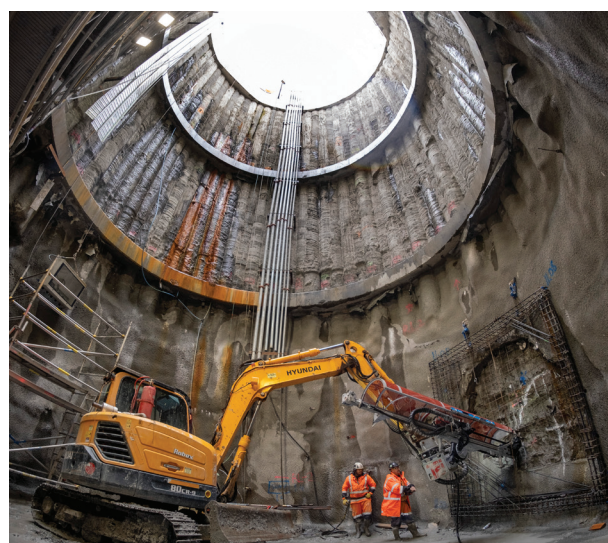
Arrival of the TBM



TBM at Māngere Pump Station



Haycock Avenue Shaft



Dundale Avenue Shaft

Bored over summer? Let's make shortbread, a staple kiwi cookie for your picnic basket.

Ingredients

- 250g butter, softened
- 1 cup icing sugar
- 1 cup cornflour
- 2 cups standard flour

Method

1. Preheat the oven to 130°C. Line two baking trays with baking paper
2. Cream the butter and icing sugar until light and fluffy. Sift the cornflour and flour together and add to the creamed mixture
3. Turn onto a floured surface and knead well, pushing the mixture with your hands until it forms a smooth dough
4. Form the dough into a log, wrap in greaseproof paper and chill for 10 minutes
5. Then cut into 5mm thick biscuits. Place on the prepared trays and prick with a fork
6. Bake for about 30 minutes or until pale golden.



Any questions?

For up to date information please see our website:

 www.centralinterceptor.co.nz

You can also email us at:

 ciproject@ga-jv.com

Or phone:

 0800 GAJV 02 (0800425802)



We encourage you to receive these updates electronically - send us your email, your current mailing address and quote "Sign me up: Keith Hay Park site bulletin" to ciproject@water.co.nz