

HUIA WATER TREATMENT PLANT REPLACEMENT OPTIONS: HISTORIC HERITAGE ASSESSMENT

Prepared for Watercare Services

April 2017

By
Kim Tatton (MA Hons)
Rod Clough (PhD)

Contents

Introduction.....	1
Project Background	1
Methodology	1
Background to Study Area	7
Historical Background	7
Archaeological Background	7
Existing Huia and Manuka WTP Options	10
Physical Environment	10
Historic Heritage Sites	10
Information from Early Maps and Photos	13
Parker Road North & South WTP Options.....	16
Physical Environment	16
Historic Heritage Sites	16
Information from Maps and Photos	20
Discussion and Conclusions	22
Summary of Results.....	22
Existing Huia WTP Option	22
Manuka WTP Option.....	22
Parker Road North WTP Option.....	23
Parker Road South WTP option.....	23
Maori Cultural Values.....	24
Assessment Limitations	24
Effects of WTP Options	24
Historic Heritage Legislation.....	25
Resource Management Act 1991 Requirements	25
Heritage New Zealand Pouhere Taonga Act 2014 Requirements	26
Conclusions.....	27
Recommendations	29
Bibliography.....	30
Appendix 1: Site Record Forms.....	31

INTRODUCTION

Project Background

A replacement Huia Water Treatment Plant (WTP) is proposed by Watercare Services Ltd (Watercare) in the Titirangi / Oratia area of Waitakere, Auckland City (Figure 1). Watercare is currently in the process of site selection for the new WTP to replace the existing Huia WTP at Titirangi. A short-list of four sites have been selected –

- Existing Huia WTP site;
- Manuka Road WTP site;
- Parker Road North WTP site; and
- Parker Road South WTP site

(See Figure 1–Figure 5).

This report is a desk-top assessment commissioned by Watercare to establish whether there are any archaeological or other historic heritage constraints within each of the four WTP options. Firstly, by identifying any previously recorded sites within the WTP site areas and in the near vicinity, and secondly, to assess the potential likelihood of unrecorded sites also being present. No detailed archaeological site inspections have been carried out on any of the WTP option areas as part of the desk-top assessment.

The four WTP options will then be compared and scored based on the identified effects on historic heritage for the purpose of a Multi-Criteria Analysis (MCA) assessment. Recommendations are made in accordance with statutory requirements.

Methodology

The New Zealand Archaeological Association's (NZAA) site record database (ArchSite), Auckland Council's Cultural Heritage Inventory (CHI), Auckland Unitary Plan Operative in Part (AUPOP) schedules, and the Heritage New Zealand Pouhere Taonga (Heritage NZ) List / Rārangi Kōrero (formerly known as the NZ Historic Places Register) were searched for information on sites recorded in the vicinity. Literature and archaeological reports relevant to the area were consulted (see Bibliography).

Early plans held at Land Information New Zealand (LINZ) and early aerial photographs from the Auckland Council GIS were checked for information relating to past use of the properties.

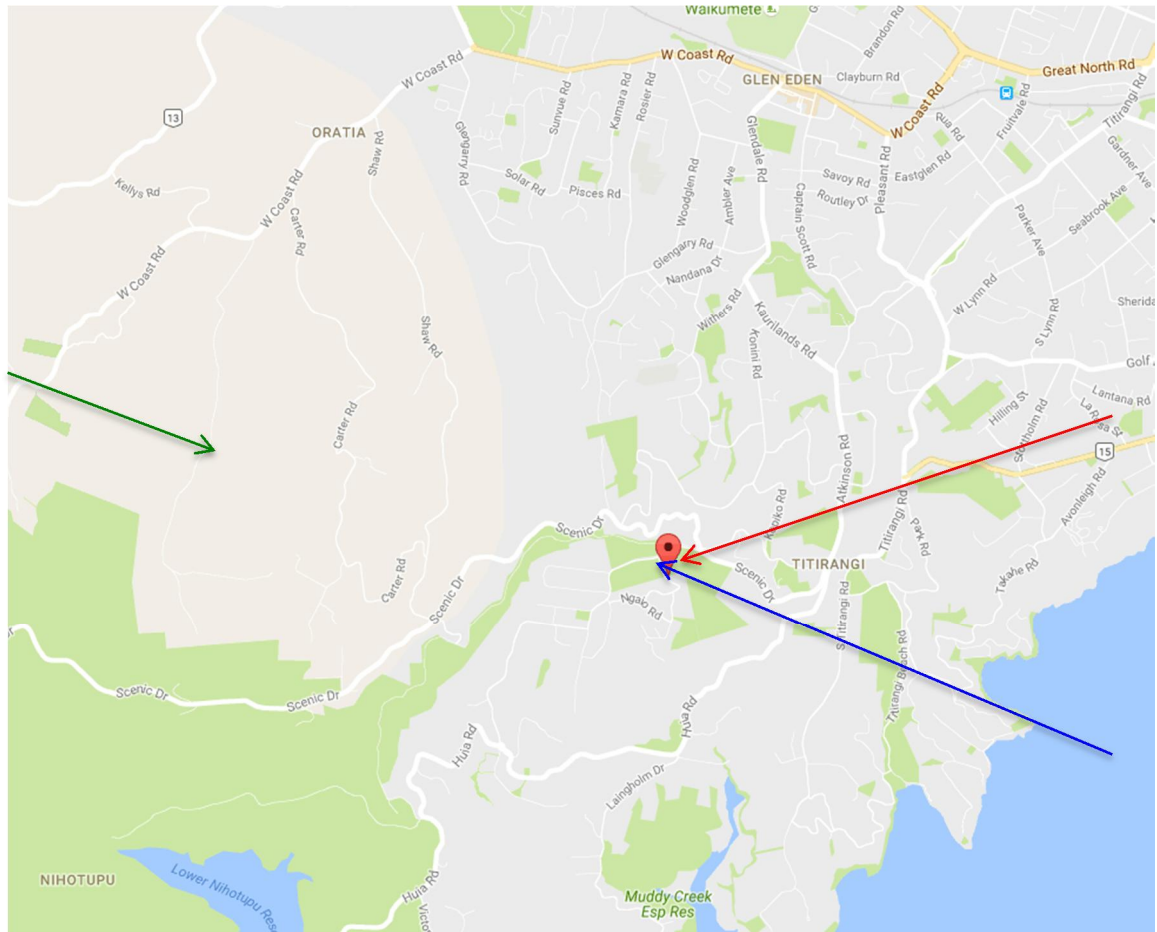


Figure 1. The location of the new Huia WTP options – the Existing Huia (blue arrow), Manuka Road (red arrow) and the Parker Road North and South (green arrow) options (source: Google Maps)

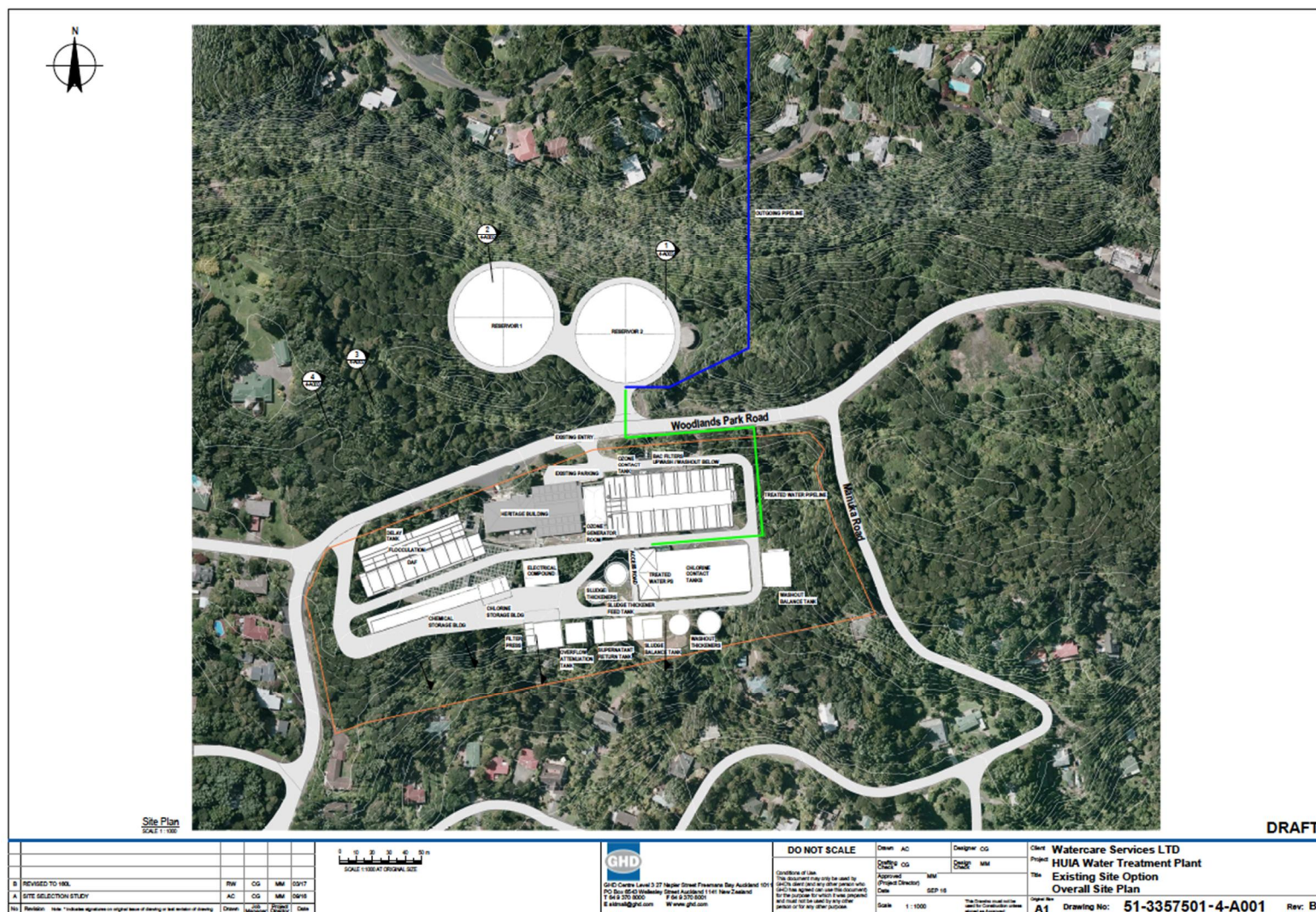


Figure 2. Existing Huia WTP option at the Huia Filter Station, Woodlands Road, Titirangi (source: GHD)

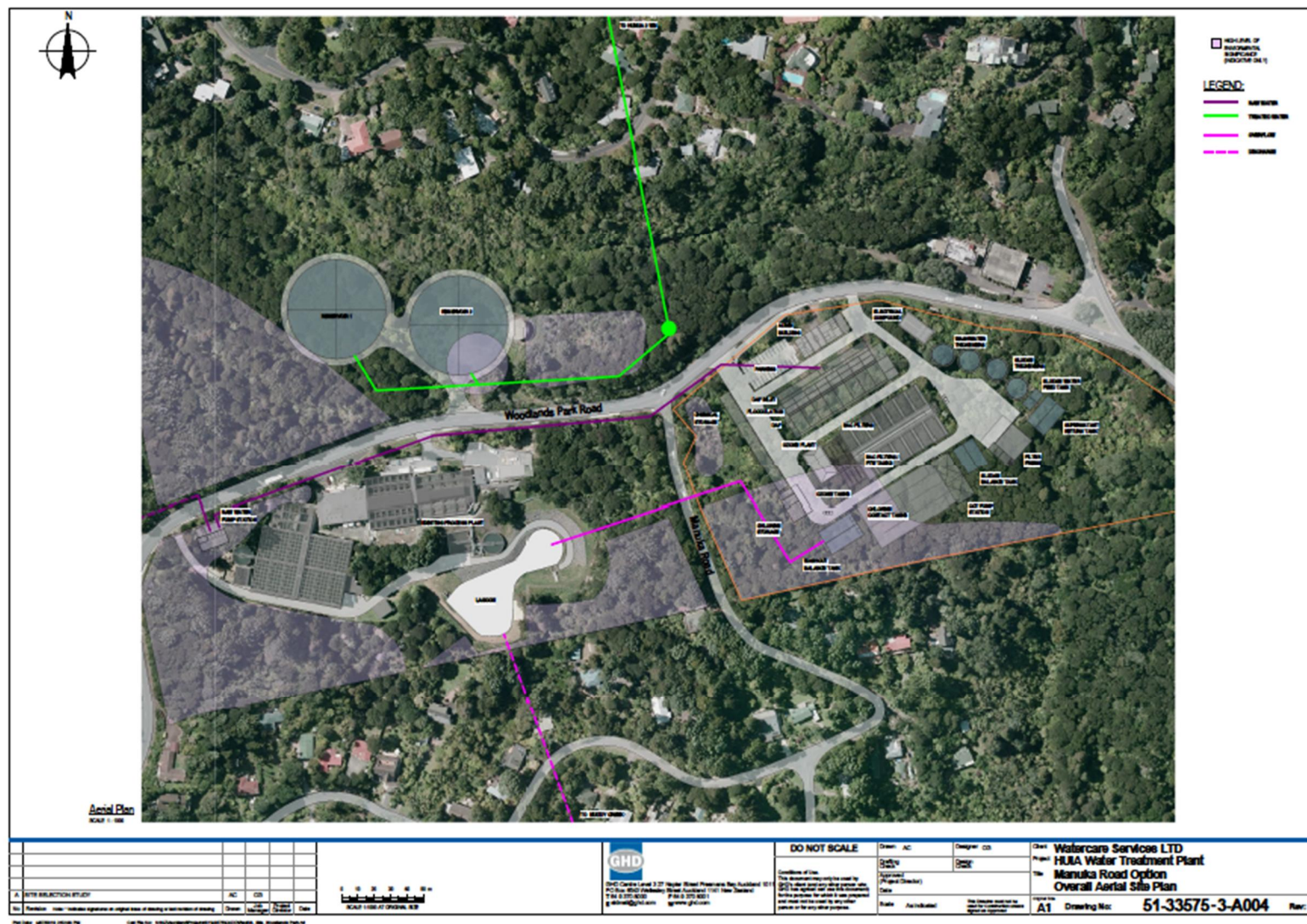


Figure 3. Manuka Road WTP option on the corner of Woodlands Road and Manuka Road (adjacent to the Huia Filter Station), Titirangi (source: GHD)

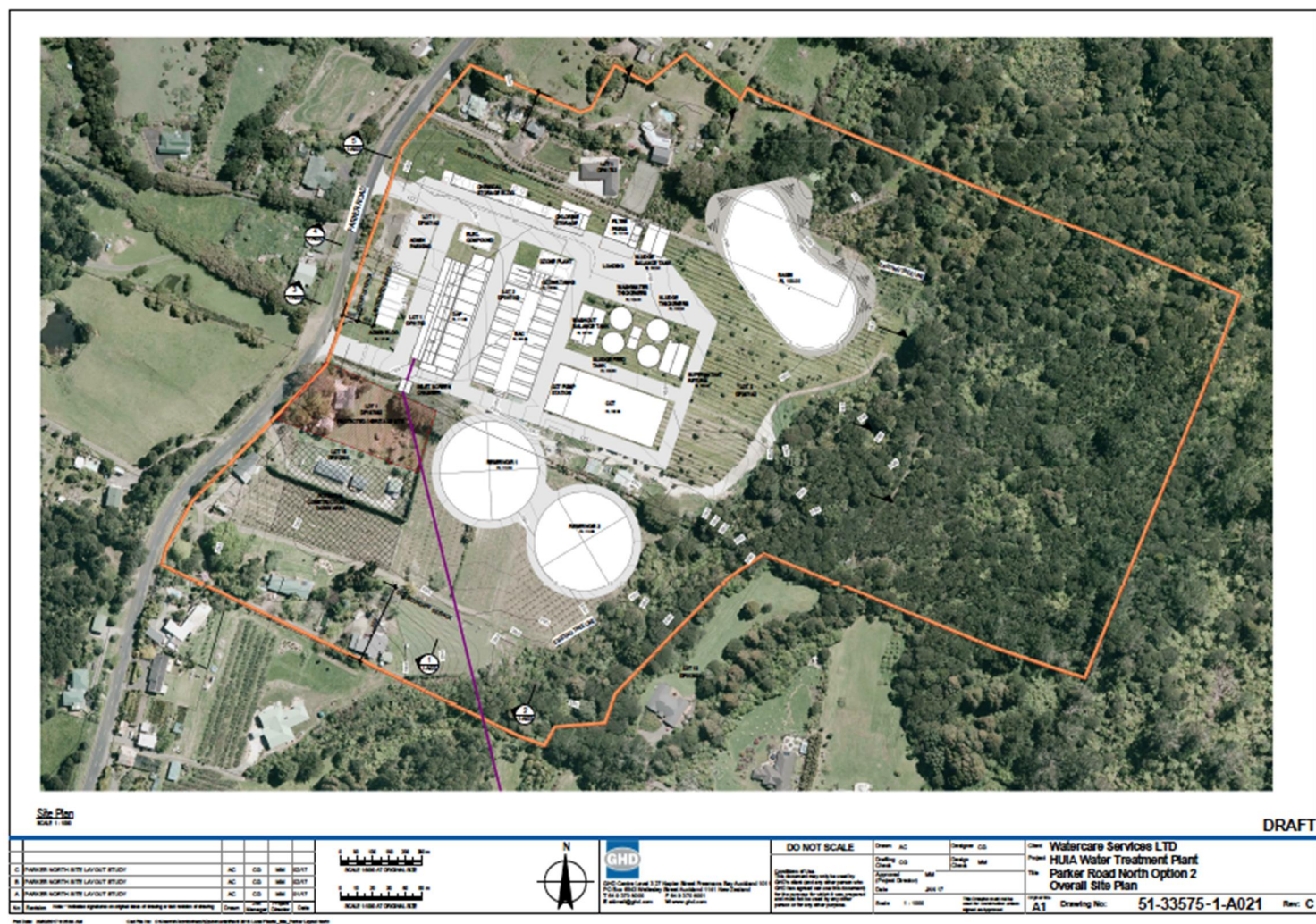


Figure 4. Parker Road North WTP option, Parker Road, Oratia (source: GHD)

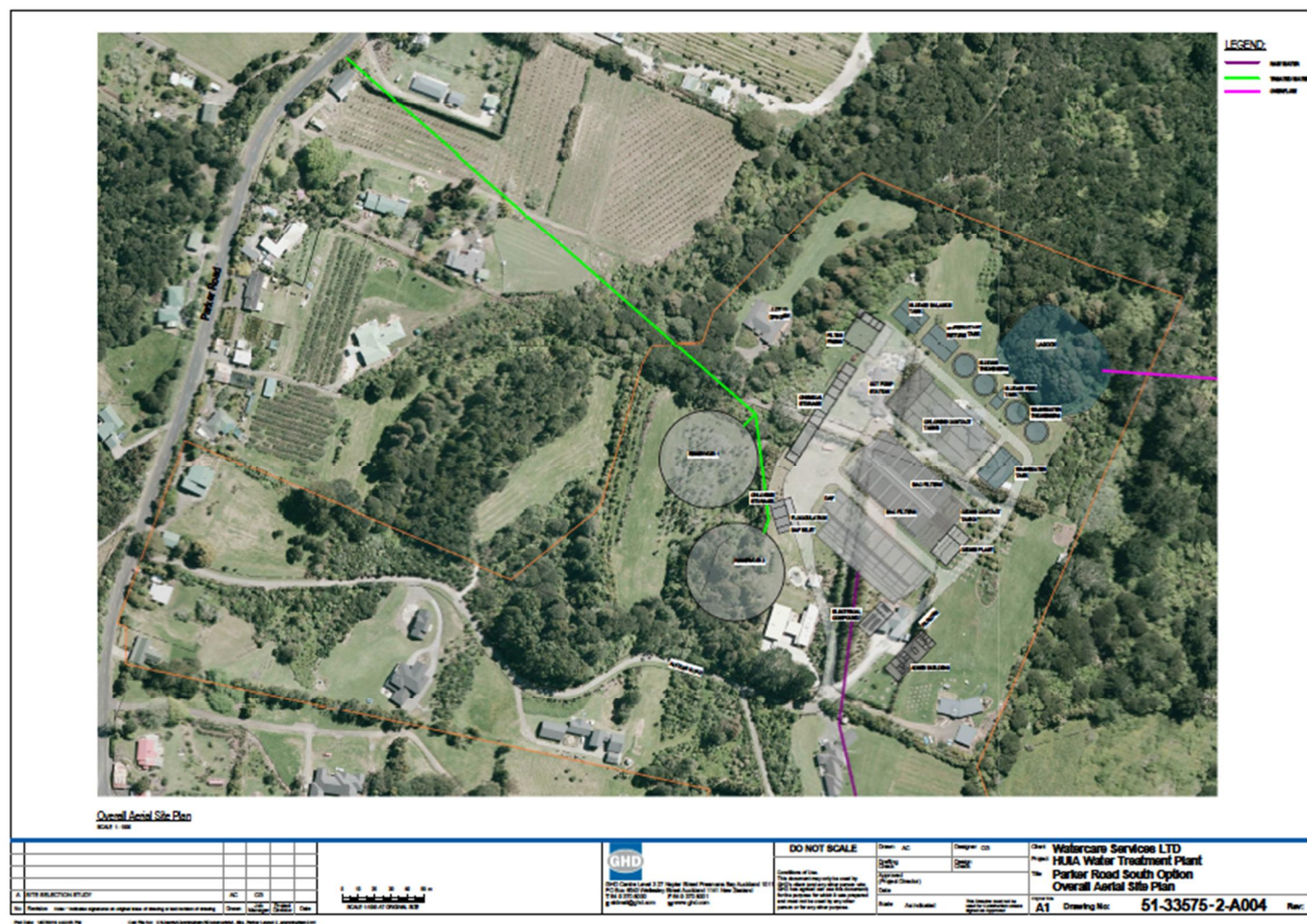


Figure 5. Parker Road South WTP option, Parker Road, Oratia (source: GHD)

BACKGROUND TO STUDY AREA

Historical Background

The Waitakere Ranges and the Oratia-Titirangi district have a rich and unique history. The first inhabitants of the land, or tangata whenua, were Maori, whose occupation of the landscape can be traced back over centuries and is evidenced in the numerous archaeological sites and associated place names (Murdoch 1990:9). The area was traversed by ara (walkways) including the significant Kaipara-Whau walking track, which was located between Riverhead and Whau (New Lynn) Portages. The Oratia Stream provided further means of transport as well as a fresh water supply (Burnett June 2013:2).

Several tribal groups were affiliated with the early occupation of West Auckland, and in particular Te Kawerau a Maki (Murdoch 1990:12) and Ngati Whatua.

The introduction, first, of musket warfare and then of European land speculators in the 1880s significantly diminished the West Auckland Maori population and their tribal lands. Iwi continued to occupy land along the coast and utilize the Ranges for harvesting food into the 20th century, despite the rapid reduction of their original tribal area (Murdoch 1990:16).

Early colonial families began to settle in the area from the 1850s. These pioneer settlers predominantly originated from the British Isles and bought large tracts of land issued by Crown Grant. Notable early families in the Oratia area included Parr, Kelly, Cochran, Whittaker, Sharp, Shaw, Parker and Davidson. Notable vestiges of these families can be seen in remaining 19th century residential and farming structures. In the early 1900s another surge of migrants occurred when Croatian families began to settle. The semi-rural and horticultural landscapes of the area were attractive features to the new settlers, and by the 1920s Oratia held the largest community of Croatians in New Zealand (Burnett June 2013).

Both groups of European migrants made a significant impact on the landscape through working the land. Originally cloaked in native bush such as kauri, rimu, totara and manuka, large tracts of land were cleared from the 1850s to facilitate timber extraction, mixed farming and horticulture. The establishment of orchards and nurseries dominated production in the district and proved highly successful, earning Oratia the title of 'The Fruitbowl of Auckland'. Nurseries and orchards in the area cultivated a wide variety of produce, with apples, pears and stone fruit among the most popular and well-known yields. In 1896 the Waikomiti Fruitgrowers' Association formed to support local fruitgrowers and the association was instrumental in the construction of a co-operative packing shed in 1924.

Archaeological Background

The relatively large number of historic heritage sites recorded within Waitakere City is due to the extensive life-time work of Jack Diamond since the 1930s, and more formal recording and reporting of historic sites in the Waitakere Ranges undertaken in the 1970s with the assistance of Bruce Hayward (see Hayward and Diamond 1978a). Historic sites recorded include remnants of the kauri logging industry and early farming, hoteliery and shipping, such as log tramlines, wharves, dams and tracks. This work is regionally

significant with respect to process and methodology, employing extensive historic research and ground survey, and a thematic approach to recording – something that could be applied region wide. Some of the historic sites are associated with the activities of both Europeans and Maori, for example, the flax and timber milling industries of the mid-to late 19th century.

Maori archaeological site distribution focuses on the coastlines – the Tasman Sea and west coast, the Manukau Harbour to the south and the Waitemata Harbour to the east. However, this distribution is somewhat biased by the locations of site surveys that have focused on a kilometre-wide strip along these three coasts lines (see Hayward and Diamond 1978).

The most numerous archaeological sites are middens, followed by rock shelters, terrace complexes, pa, house sites and artefact findspots. The greatest variety of Maori sites are found on the west coast of the Waitakere Ranges where pa, rock shelters, undefended settlement sites, pit clusters and cultivation sites are clumped around the lower stretches of the major stream valleys, various beaches and fishing points from Muriwai to the Manukau Head (Hayward and Diamond 1978:97; Lawrence 1989:175). Along the shores and tidal inlets of the Manukau Harbour and Waitemata Harbour midden sites are by far the most common site type, as would be expected, being in close proximity to the shellfish beds. These sites appear to be mainly of a temporary nature. The lack of large settlement sites along the Manukau Coast is said to reflect a traditional boundary between iwi groups from the 17th century, with Kawerau to the north and north-west, Waiohua and later Ngati Whatua to the east and the Waikato tribes in the south (Hayward and Diamond 1978). However, there are also some large clusters of complex terrace sites, cultivation sites and pa in this area, indicating a period of permanent settlement pre-dating the 18th century (Lawrence 1989).

The eastern foothills of the Waitakere Ranges have few recorded archaeological sites. Most of the inner Waitakere Ranges were inhospitable for permanent settlement but were used as temporary hiding or refuge places from other regions (Lawrence 1989:146, 149). Inland sites tend to be located on the stony silt loams of the Huia Series soils which cover much of the frost-free lower stream valleys on the west coast. These were favoured for growing kumara over the strongly leached infertile Waitakere clays that cover most of the area (Lawrence 1989). The Red Hill series soils surrounding Muriwai were also preferred by Maori for gardening and were more heavily occupied than other soils types (Simpson 1993:24).

While transport by canoe was the favoured method of transportation on the east coast of the North Island, this was restricted on the west coast by the rough seas. Therefore, there are several major Maori overland routes between waterways and canoe portages, namely the Whau Portage between the Waitemata and the Manukau Harbours, the Riverhead Portage between the Waitemata and Kaipara Harbours, the Kaipara to Whau walking track, and the Te Henga (Bethells Beach) to Whau walking track (Hayward and Diamond 1978:95-96). Archaeological sites are located near the major north-south walkway routes in the Waitakere area and where there are extensive views over the area (Murdoch in Felgate Dec 1996:19).

European settlement in West Auckland began in the 1840s following land purchases by the Crown and early settlers, and numerous sites relating to early European settlement and industry have been recorded (Hayward and Diamond 1978a). Most of the early purchases, and many of the archaeological sites, relate to the kauri timber industry, which

laid the foundation for towns such as Henderson, Waitakere and Swanson, where streams led from the kauri forests to the Waitemata Harbour, providing accessibility and transport. By the 1870s, workable timber was dwindling and by the early 1900s there was little millable timber left. Therefore, orchards, farming and gum digging took over as West Auckland's economic base, although these industries, as well as the milling of flax, began in the area as early as the 1840s.

European industry also focused around the coastal edge of the Waitemata Harbour where there was easy access via wharves to shipping for the import and export of goods. Many brickworks were established on the harbour and Whau River where there was a readily available source of clay to quarry.

EXISTING HUIA AND MANUKA WTP OPTIONS

Physical Environment

The Existing Huia WTP site is located at 32 Woodlands Park Road (Lot 5 DP 156565) immediately to the west of the intersection of Woodlands Park Road and Manuka Road, and west of the Titirangi Village (Figure 2). The underlying zone is Public Open Space – Conservation Zone in the AUPOP, covered by a Watercare designation for Water Supply purposes.

The current Huia Filter Station is located on this site, and was built in 1928. This building forms part of a complex of structures on the Watercare Services Filter Station site. The development of this site for a new WTP will retain the Huia Filter Station building but will require the demolition of surrounding associated infrastructure (process units) and later additions to the plant.

The Manuka WTP Option is located immediately east of the intersection of Woodlands Park Road and Manuka Road, and adjacent to the Huia Filter Station, on Lot 6 DP 156565 (Figure 3). This area is also zoned Public Open Space – Conservation Zone in the AUPOP. Currently this area is covered in native bush and scrub.

The Manuka WTP option appears to include the construction of a lagoon and a Raw Water Pump Station on the existing Huia Filter Station site adjacent (Figure 3). Also, both the Existing Huia WTP and Manuka WTP options include the construction of two large water reservoirs north of the Huia Filter Station site and Woodlands Park Road (see Figure 2, Figure 3).

Historic Heritage Sites

(Refer Figure 6, Figure 7, Table 1 and Appendix 1)

There has been no recent specific archaeological survey of the Existing Huia WTP or Manuka WTP option areas. However, Hayward and Diamond's survey of Maori sites along the Manukau Harbour coast (Hayward and Diamond 1978) and survey of historic sites within the Waitakere Ranges (Hayward and Diamond 1978a) also included the recording of the sites within this general area.

Watercare has recently commissioned a heritage assessment report on the Huia Filter Station (Matthews and Matthews Sep 2015). The Huia Filter Station (CHI 3397) is a scheduled Historic Heritage Place in the AUPOP Schedule 14.1 (UPID00077) as a Category B item. The building is identified for A) Historic Values, F) Physical Attributes and G) Aesthetic Values. The interior is, however now excluded, under the schedule. The Extent of Place identified with the scheduling is shown on the planning maps (Figure 7). The Huia Filter Station is not listed in the New Zealand Heritage List.

There are no archaeological or other historic heritage sites recorded within the proposed Existing Huia WTP Option area. Given the level of modification to this entire area since the original construction of the Huia Filter Station in 1928, subsequent additions to the building in 1947, the building of a large complex of settling tanks to the south of the building in the 1970s and further additions to the building in the 1970s and 1980s, any earlier archaeological remains are unlikely to have survived on this site.

A scheduled kauri tree (CHI 2175) on the Natural Heritage Notable Trees Overlay (# 1836) in the AUPOP is located at Woodlands Park Road on the corner of Manuka Road (Figure 6) and in the north-west corner of the Manuka WTP option area. Survey plan SO 61159 (1988) (Figure 8) also shows a notable kauri tree at this location.

According to the Manuka WTP option site plan the AUPOP scheduled kauri tree # 1836 located in the north-western corner of Lot 6 DP 156565 will not be impacted by this proposed option.

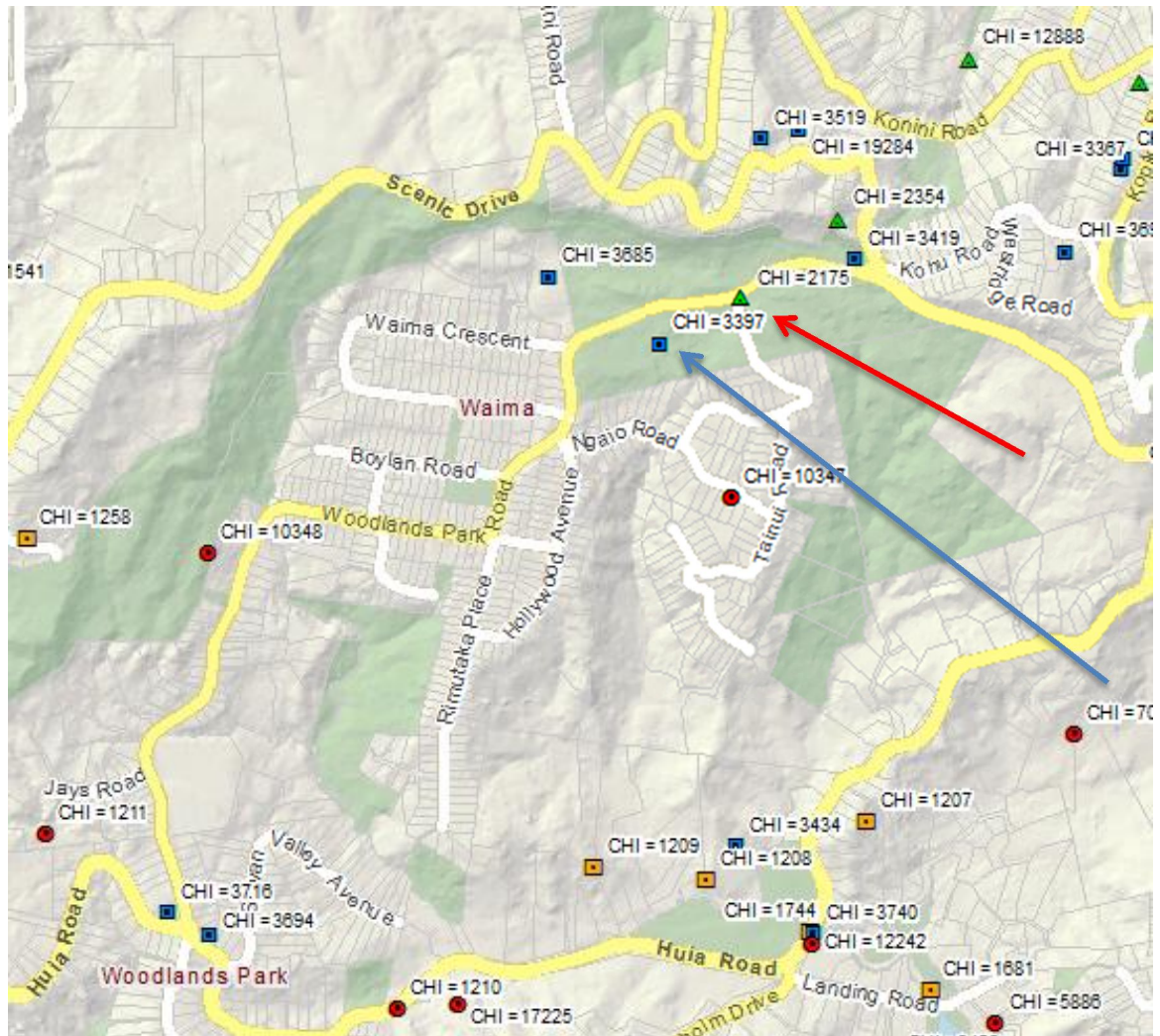


Figure 6. Plan showing the location of recorded archaeological and other historic heritage sites in the vicinity of the Existing Huia WTP option (blue arrow showing the location of the Huia Filter Station) and Manuka WTP (red arrow) options (source: Auckland Council GIS). Archaeological sites = red dots, heritage buildings = blue squares, heritage trees = green triangles

Table 1. Recorded archaeological and other historic heritage sites in the vicinity of the Existing Huia WTP and Manuka WTP options (see Figure 6).

CHI #	NZAA #	Site Type	Name	Location	NZTM Easting	NZTM Northing	AUPOP schedule #
2175		Tree	Kauri	Woodlands Park Road, corner Manuka Road	1746208	5910763	1836?
2354		Tree	Puriri	64 Scenic Drive	1746391	5910916	
3397		Building-Industrial	Huia Filter Station	32 Woodlands Park Road	1746051	5910678	UPID00077 Cat B
3419		Building-Industrial	Nihotupu Filter Station	219 Scenic Drive	1746421	5910842	UPID00086 Cat B
3685		House Site	John Bishop's House	Huia Road (location estimated from early maps)	1745840	5910808	

The nearest other recorded historic heritage site in the vicinity of the Existing Huia WTP and Manuka WTP options is the Nihotupu Filter Station located at 219 Scenic Drive on the corner of Woodlands Park Road and Scenic Drive, approximately 500m to the north-east. Built in 1927 the original Nihotupu Filter Station building survives close to its original form and layout, but has been added to. This filter station is no longer in use (Matthews and Matthews Sep 2015a).

The Nihotupu Filter Station is also included in the AUPOP schedule of Historic Heritage Places (Schedule 14.1: UPID 00086) in Category B. The Extent of Place identified with the scheduling is shown on the council planning maps.

Neither the Existing Huia WTP or Manuka WTP options nor their associated infrastructure appear to affect the site of the Nihotupu Filter Station.



Figure 7. AUPOP planning map showing the extent of place of the scheduled Huia Filter Station (left-hand area of purple hatching) and Nihotupu Filter Station (to the right) in the AUPOP (source: Auckland Council)

Information from Early Maps and Photos

The Existing Huia and Manuka WTP options were originally part of Blk VI, Allot 27 Parish of Waikomiti. A search of early survey maps and plans from LINZ did not identify any particular items of historic interest on either of these two WTP option areas. In 1900 survey plan SO 11895 describes the area as ‘Improved Land’. However, by 1925-26 survey plans DP 18829 and SO 23931 identify ‘Tall Manuka and Native Scrubs’ and ‘Native Bush’ across these areas. Survey plan DP 19259 from the same year identifies the areas as ‘Auckland Council’ owned. Figure 8, a 1988 plan showing notable kauri tree (CHI 2175) at the corner of Manuka Road, has been referred to above.

An examination of early aerial photographs shows these two proposed WTP areas in 1940 (Figure 9) and 1959 (Figure 10). Both these images show the Huia Filter Station and a number of small buildings or houses on the Manuka WTP option area. These buildings no longer exist; however, examination of recent aerals clearly shows where they were located as disturbed and cleared areas within the bush vegetation. There is no evidence from survey plans that these buildings existed prior to 1926 and it is believed that they were built in the c.1920s-1930s for the Huia and Nihotupu Filter Station staff and demolished in the 1990s. There were four houses south of Woodlands Park Road and two houses to the north of the road.

Should the Manuka WTP option be identified as a preferred option further archival research will need to be carried out to identify these structures and when they were built.

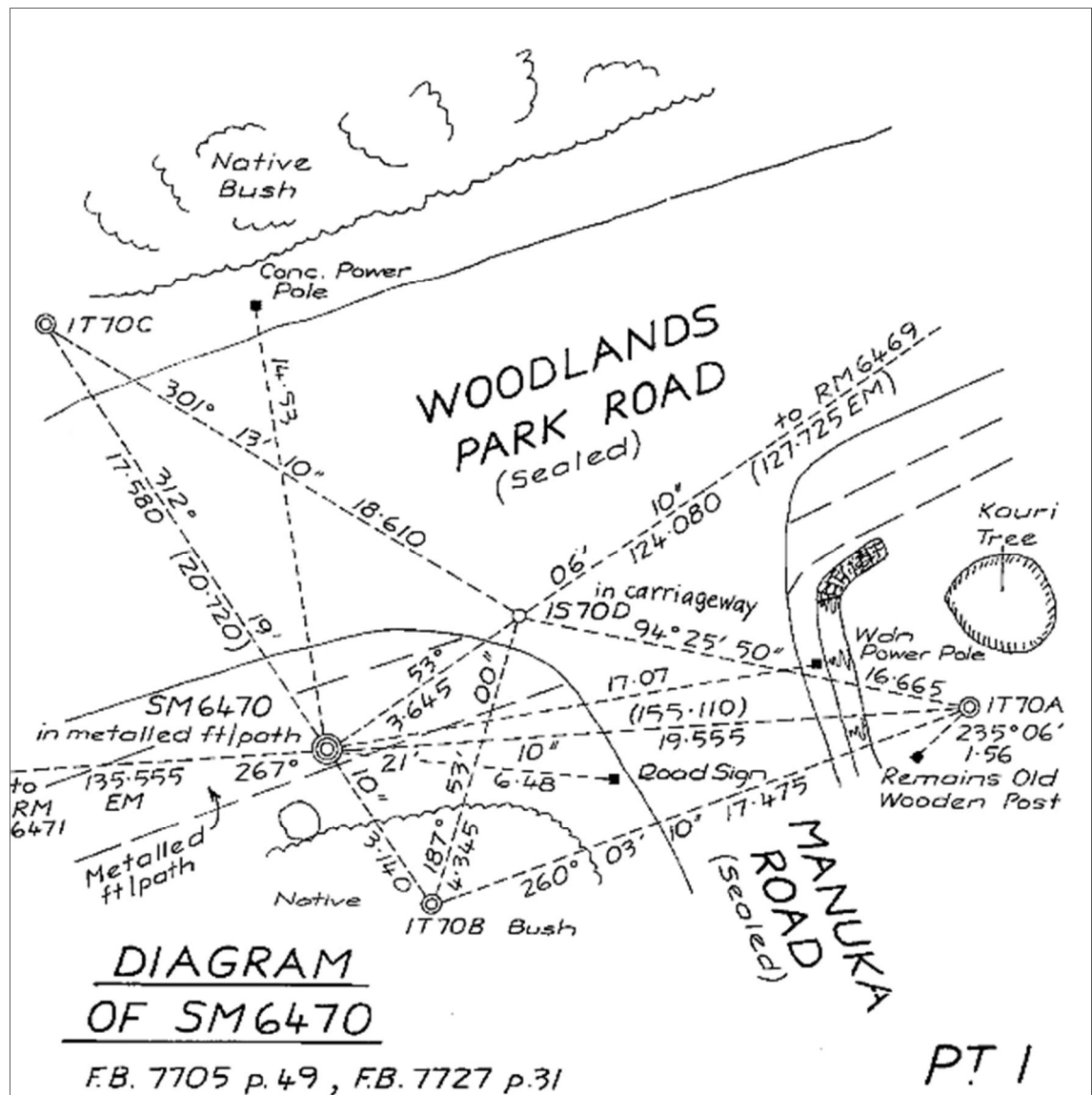


Figure 8. Part of survey plan SO 61159 (1988) showing the location of a kauri tree in the north-west corner of the Manuka WTP option area

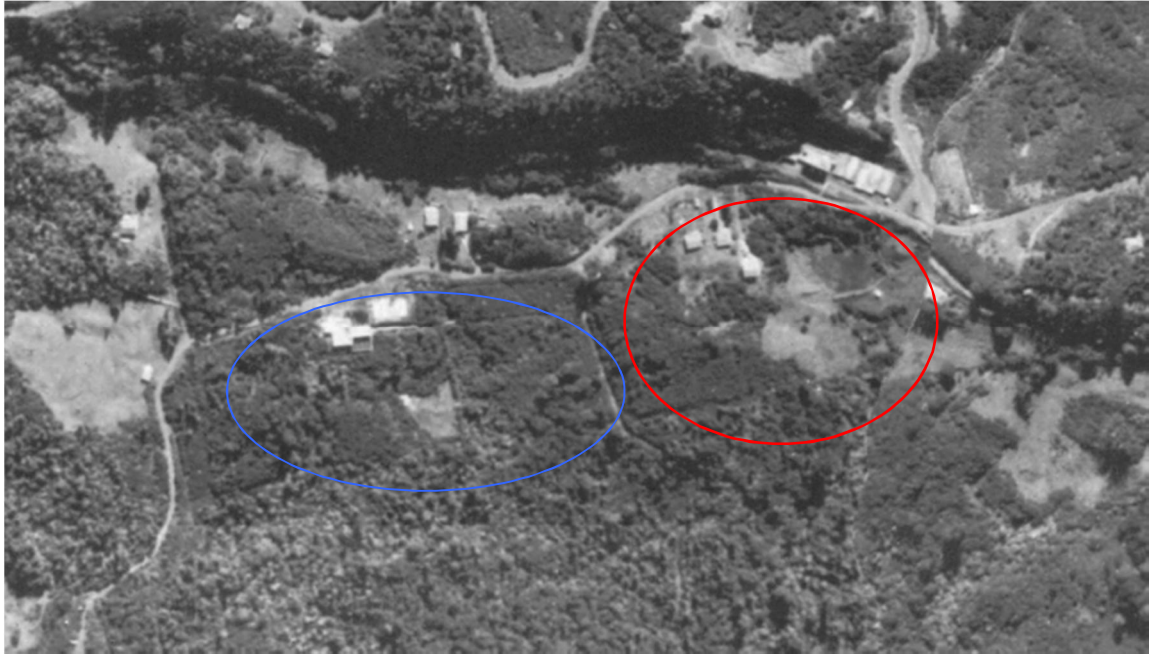


Figure 9. 1940 aerial photograph of the Existing Huia WTP Option area (blue circle) with the original Huia Filter Station; Manuka WTP Option area with several small buildings (red circle). The Nihotupu Filter Station is located immediately north and across Woodlands Park Road from the Manuka WTP Option area (source: Auckland Council GIS)



Figure 10. 1959 aerial photograph of the Existing Huia WTP Option area (blue circle) with the original Huia Filter Station; Manuka Option area with several small buildings (red circle)

PARKER ROAD NORTH & SOUTH WTP OPTIONS

Physical Environment

The Parker Road North WTP option is located across 124-140 Parker Road (east of Parker Road) (Figure 1, Figure 4), being Lot 1 DP 91752, Lot 1 & 3 DP 367142, Lot 2 DP 330098 and Lot 14 312031. Two access roads are proposed to the Parker Road North WTP option at 122 and 130 Parker Road within Lot 3 DP 367142.

The Parker Road South WTP option is located approximately 500m south of the Parker Road North WTP option at 152 Parker Road (152C, D, H, J, K and L Parker Road) (Figure 5). This proposed WTP is spread across these properties (Lots 4, 5, 9, 10, 11 and 12 DP 312031). Access to the WTP is provided by an existing access road off Parker Road.

Both of these areas comprise rural-residential lifestyle lots with existing houses and fruit orchards. Small areas of bush separate the two WTP option sites, and bush surrounds the Parker Road South WTP option site to the north and east.

Historic Heritage Sites

(Refer Figure 11, Table 2 and Appendix 1)

The two Parker Road WTP options are located within an area of archaeological survey and historic study previously carried out in the Oratia Valley (Clough and Prince Sep 1995; Burnett Jun 2013).

There are very few Maori archaeological sites recorded along the Oratia Stream and within its upper valley. However, like all streams running into the Waitemata and in proximity to the valleys of the West Coast, they would have been a corridor for travel between the east and west coasts and to the Manukau Harbour (Clough and Prince Sep 1995:3). There is other evidence to suggest significant use of the Oratia Stream and adjacent land by Maori, and that a Maori settlement spread around the Oratia Stream by Parrs Corner and the junction of West Coast Road and Shaw Road. However, the use of the land over the last 150 years by European settlers, first for timber and then for nurseries, has generally modified traces of earlier Maori use and occupation in these areas (Clough and Prince Sep 1995:4-5).

European history in Oratia began in the mid-19th century when early settlers arrived to exploit the timber resources of the valley. Within a decade of the onset of logging, more settlers came to work the land, developing nurseries, orchards and other agricultural products. Horticulture, and in particular orchards, became the mainstay of the area throughout the remainder of the 19th century and they are still a significant part of the landscape today (Clough and Prince Aug 1997).

Located at 108 Parker Road is Endt Cottage (CHI 3763) or 'Sunnydale', a two-storey rectangular cottage made of pit sawn kauri timber and thought to be the oldest surviving residence in West Auckland, built by J. Thomson around the 1850s-early 1860s (Burnett Jun 2013:19). The house is included on the schedule of Historic Heritage Places in the AUPOP (Schedule 14.1: UPID00109) as Category B with a Defined Extent of Place shown on the planning maps, which incorporates much of Lot 2 DP 50785 at 108 Parker Road (Figure 12). Endt Cottage is also listed on the Heritage New Zealand List as a Category II Historic Place (no. 7350).

Three black pines (CHI 2316) are recorded on the Endt Cottage property at 94-108 Parker Road and also at 128 Parker Road (Lot 1 DP91752), which are thought to relate to early planting on the property that has spread over a 104m² area. The two black pines at 108 Parker Road are scheduled in the AUPOP (Schedule 10 Notable Trees UPID01849). It will need to be confirmed whether any of these trees are located at 128 Parker Road, which is located within the Parker Road North WTP option area. A large Oak tree (CHI 2335) was also recorded on the property at 128 Parker Road, which has since been destroyed.

Endt Cottage and property is located approximately 200m north of the proposed Parker Road North WTP Option and should not be affected.

Theet's Cottage or 'Otimai' (CHI 3765) is located on the property at 132 Parker Road. Built in 1880, this cottage was originally located on the corner of West Coast Road and Kauri Loop Road but was moved to its Parker Road site after 1978. Between 1927 and 1978 it was part of the Girl Guides 'Otimai' Camp at its West Coast Road location.

Theet's Cottage is considered to be the oldest surviving building from Waiatarua and is on the schedule of Historic Heritage Places in the AUPOP (Schedule 14.1: UPID00108) as Category B with a Defined Extent of Place shown on the planning maps incorporating the whole of Lot 1 DP 167502 at 132 Parker Road (Figure 12). Although substantially altered the present owners are restoring it.

The Parker Road North WTP option surrounds the property containing Theet's Cottage to the north and east, with the southern proposed access road running along the property's northern boundary and proposed reservoirs located immediately to the east of the property. A tunnel (pipeline) into the WTP will also pass below this property but will be relatively deep and should have no impacts. Therefore, the proposed development areas of this option do not appear to directly impact on the cottage or into the AUPOP Extent of Place (see Figure 13). Earlier development plans for this option directly impacted on this property but have been changed to avoid any impacts on historic heritage values.

There are no recorded sites within the Parker Road South WTP option.

Table 2. Recorded archaeological and other historic heritage sites in the vicinity of the Parker Road North and Parker Road South WTP options

CHI #	NZAA #	Site Type	Name	Location	NZTM Easting	NZTM Northing	AUPOP schedule #
2316		Trees	Black Pine Trees	94-108 Parker Road 128 Parker Road Oratia	1743494	5911656	UPID01849 (108 Parker Road)
2335		Tree	Oak (destroyed)	128 Parker Road Oratia	1743204	5911327	
3664		Building - Dwelling	Bungalow	121 Parker Road Oratia	1743169	5911411	
3763		Building - Dwelling	Endt Cottage Sunnydale	108 Parker Road Oratia	1743393	5911573	UPID00109 Cat B
3765		Building - Dwelling	Theet's Cottage	132 Parker Road Oratia	1743177	5911287	UPID00108 Cat B

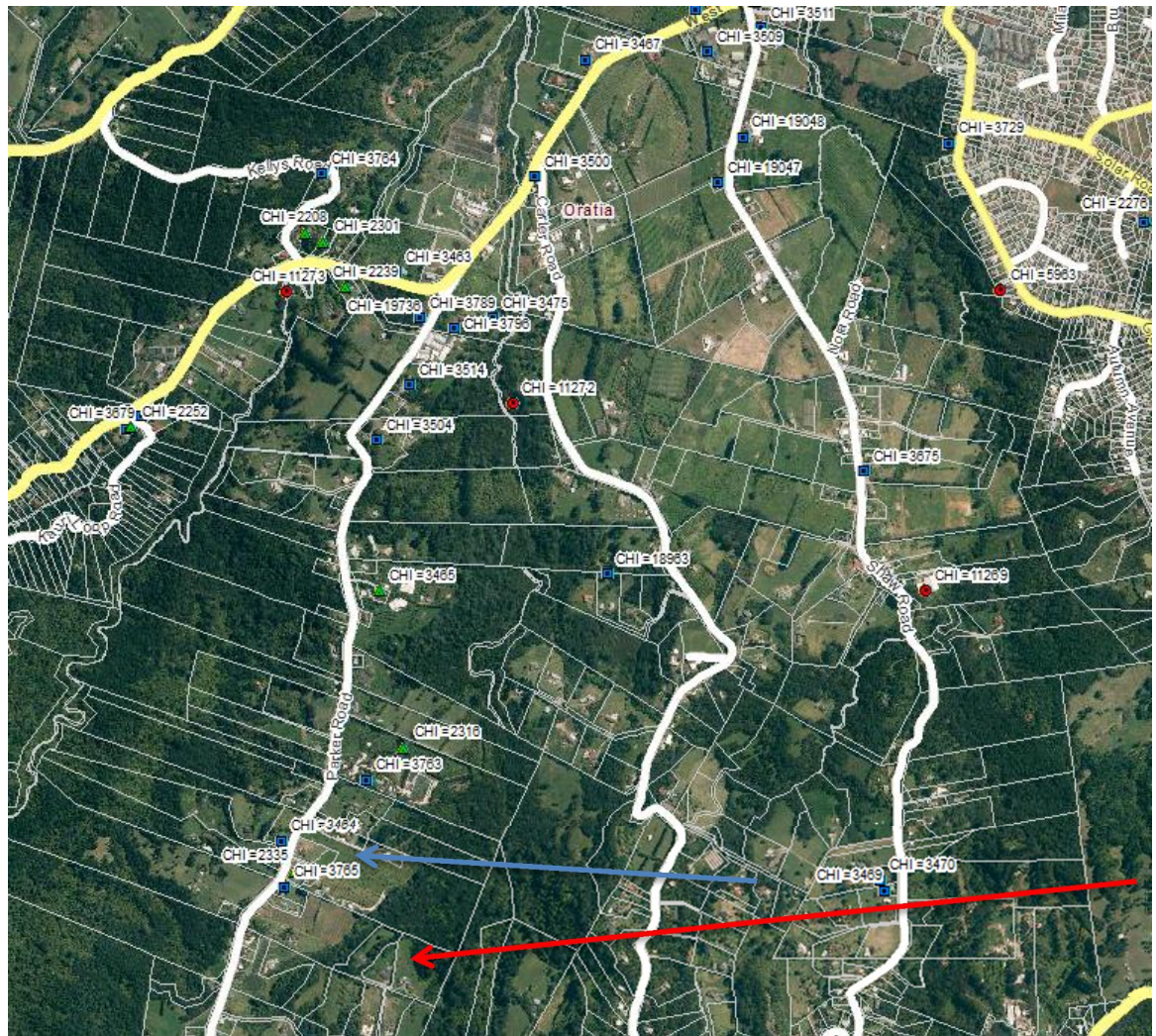


Figure 11. Plan showing the location of recorded archaeological and other historic heritage sites in the vicinity of the Parker Road North WTP option (blue arrow) and Parker Road South WTP (red arrow) options (source: Auckland Council GIS). Archaeological sites = red dots, heritage buildings = blue squares, heritage trees = green triangles

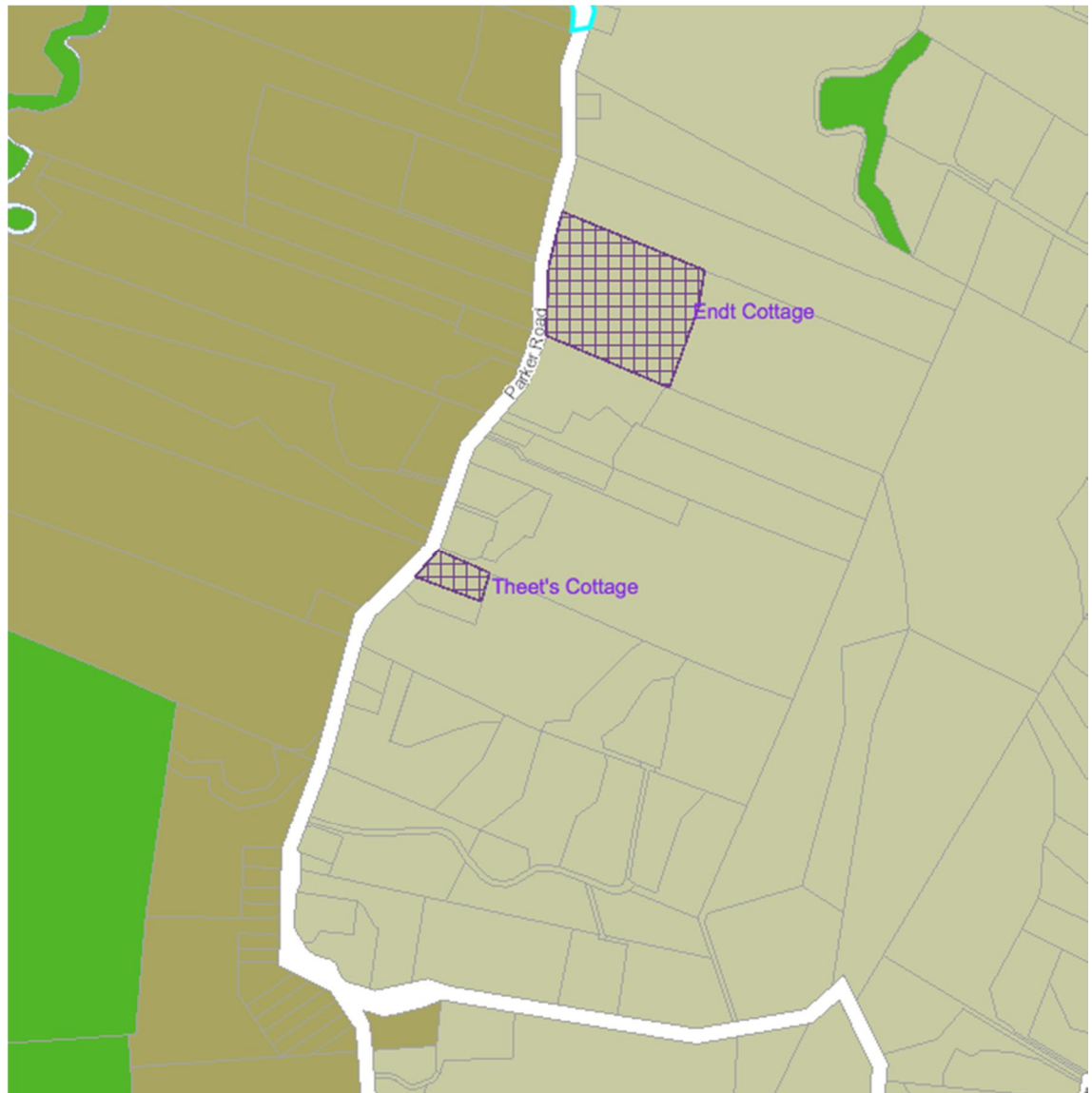


Figure 12. AUPOP planning map showing the extent of place of the scheduled Endt Cottage and Theet's Cottage (source: Auckland Council PAUP map)



Figure 13. Detail of the plan showing the Parker Road North WTP option and the location and the defined Extent of Place of Theet's Cottage in the AUPOP (red shading). The purple line indicated the tunnel pipeline route under 132 Parker Road.

Information from Maps and Photos

The Parker Road North and South WTP options were originally part of Blk VI, Allot 43 Parish of Waikomiti. A search of survey maps and plans from LINZ did not identify any particular items of historic heritage interest on either of these two WTP option areas.

An examination of early aerial photographs shows these two areas in 1940 (Figure 14). At that time the area of the Parker Road North WTP option was partly covered in what

looks to be regenerating native bush and open paddocks. A house is clearly present at that time on the property at 128 Parker Road (Lot 1 DP 91752) in the approximate location of the existing house on this property. A shed is also visible in the 1940 aerial on the roadside of this property and an examination of recent aerial photographs shows that it is still standing today. The proposed administration buildings for the Parker Road North WTP option will impact on the house at 128 Parker Road but do not appear to impact on the shed. Further research will be required to determine when the house in the 1940s aerial was constructed and whether the house, or any part of it survives or has been replaced by the existing house at 128 Parker Road. The heritage value of any surviving remains will then need to be assessed.

The area of the Parker Road South WTP option is also covered in what looks to be regenerating native bush. No other features of interest are visible in the early aerial photograph.



Figure 14. 1940 aerial photograph of the Parker Road North WTP (blue arrow) and Parker Road South WTP option areas (red arrow) (source: Auckland Council GIS)

DISCUSSION AND CONCLUSIONS

Summary of Results

The primary aim of this report is to establish whether any archaeological or other historic heritage constraints are present within four new proposed WTP options to replace the existing Huia Filter Station at Titirangi. Firstly, by identifying any previously recorded archaeological and other historic heritage sites within and in the near vicinity of each site, and secondly to assess the potential for unrecorded sites also being present.

The four WTP options will then be compared and scored based on the identified effects on historic heritage for the purpose of a Multi-Criteria Analysis (MCA) assessment.

The desk-top assessment based on existing knowledge established the following at each option:

Existing Huia WTP Option

The Existing Huia WTP option contains the current Huia Filter Station. This is a scheduled historic building in the AUPOP schedule of Historic Heritage Places (UPID00077) as a Category B item. The building is identified for A) Historic Values, F) Physical Attributes and G) Aesthetic Values. The interior is, however, excluded under the schedule. The Extent of Place identified with the scheduled item is shown on the planning maps.

The development of this site for a new WTP will retain the Huia Filter Station building, with the ongoing use of this heritage structure for which it was originally constructed, but will require the demolition of surrounding associated infrastructure and later additions to the plant (process units). Development of this option is therefore within the AUPOP scheduled Extent of Place of the Huia Filter Station and will encroach on its surrounds.

There are no other archaeological or other historic heritage sites recorded within the proposed Existing Huia WTP Option area. Given the level of modification to this entire area since the original construction of the Huia Filter Station, subsequent additions to the building in 1947, the building of a large complex of settling tanks to the south of the building in the 1970s and further additions to the building in the 1970s and 1980s any earlier archaeological remains are unlikely to have survived on this site.

Manuka WTP Option

A kauri tree (CHI 2175) is recorded at Woodlands Park Road on the corner of Manuka Road. The Auckland Council GIS shows its location in the north-west corner of the Manuka WTP option and a 1988 survey plan (SO 61159) confirms there is a kauri tree at this location.

A kauri tree is also scheduled on the Natural Heritage Notable Trees Overlay (# 1836) in the AUPOP, but located on the AUPOP maps in the center of the Manuka WTP option site and not its north-west corner. However, the introduction to the schedule (Schedule 10) states that the map symbol 'indicates the presence of a notable tree or notable group of trees but does not depict the actual location of the tree or group of trees.'

According to the Manuka WTP option site plan the location of the AUPOP scheduled kauri tree # 1836 is likely to be impacted upon, whereas it appears that the kauri tree located in the north-western corner of Lot 6 DP 156565 could be avoided.

Early aerial photographs (1940, 1959) show a number of small buildings or houses on the Manuka WTP option area. These buildings no longer exist; however, examination of recent aerals clearly show where they were located as disturbed and cleared areas within the bush vegetation. Apparently these were four houses built in the c.1920s-1930s for the Huia and Nihotupu Filter Station staff and demolished in the 1990s. Should the Manuka WTP option be identified as a preferred option further archival research will need to be carried out to identify these structures and when they were built.

Parker Road North WTP Option

Theet's Cottage or 'Otimai' (CHI 3765) is located on the property at 132 Parker Road. Built in 1880 this cottage was originally located on the corner of West Coast Road and Kauri Loop Road but was moved to its Parker Road site after 1978. Theet's Cottage is considered the oldest surviving building from Waiatarua and is on the schedule of Significant Historic Heritage Places in the AUPOP (UPID00108) as Category B with a Defined Extent of Place shown on the planning maps incorporating the whole of Lot 1 DP 167502 at 132 Parker Road. Although substantially altered, the present owners are restoring the cottage.

The Parker Road North WTP option surrounds the property containing Theet's Cottage to the north and east, with the southern proposed access road running along the property's northern boundary and proposed reservoirs located immediately to the east of the property. However, the proposed development areas of this option do not appear to directly impact on the cottage or into the AUPOP Extent of Place.

Three black pines (CHI 2316) are recorded on the Endt Cottage property at 94-108 Parker Road and also at 128 Parker Road, which are thought to relate to early planting on the property that have spread over a 104sqm area. Two of the trees at 108 Parker Road are scheduled in the AUPOP. It will need to be confirmed whether any of these trees are located at 128 Parker Road, which is located within the Parker Road North WTP option area and could be affected.

A small house is visible on the 1940 aerial photograph on the property at 128 Parker Road (Lot 1 DP 91752) in the location of the existing house on this property. A shed is also visible in the 1940 aerial on the roadside of this property and is still standing today. The proposed administration buildings for the Parker Road North WTP option will impact on the house at 128 Parker Road but do not appear to impact on the shed. Further research will be required to determine when the house in the 1940s aerial was constructed and whether the house, or any part of it survives or has been replaced by the existing house at 128 Parker Road. The heritage value of any surviving remains will then need to be assessed.

It is considered unlikely that any undetected archaeological or other historic heritage sites are present on the Parker Road North WTP option as this area have been previously surveyed.

Parker Road South WTP option

No archaeological or other historic heritage sites are located within or in the vicinity of the Parker Road South WTP option.

It is also considered unlikely that any undetected archaeological or other historic heritage sites are present on the Parker Road South WTP option as this area have been previously surveyed.

Maori Cultural Values

This is a desk-top assessment of effects on historic heritage and archaeological values and does not include an assessment of effects on Maori cultural values. Such assessments should only be made by the tangata whenua. Maori cultural concerns may encompass a wider range of values than those associated with archaeological sites.

The historical association of the general area with the tangata whenua is evident from the recorded sites, traditional histories and known Maori place names.

No scheduled Sites and Places of Significance to Mana Whenua within the AUPOP (Schedule 12) are identified within or in close proximity to any of the four WTP options.

Assessment Limitations

This historic heritage assessment of the four new WTP options to replace the existing Huia Filter Station is a desktop exercise to identify known heritage constraints and to assess the potential likelihood of unrecorded sites also being present. It has not included detail site inspection or archival research to date of any of the proposed four options.

Effects of WTP Options

Where feasibly possible it is always recommended that archaeological and other historic heritage sites should be avoided by choosing the option that least impacts on these values or by making changes to development plans. As this project is at the stage of site option selection, the potential for avoiding impacting on the recorded sites is entirely feasible.

The overall level of effects of the project on heritage values would be high if the Existing Huia WTP option was selected. The development of this site for a new WTP will retain the Huia Filter Station building, with the ongoing use of this heritage structure for which it was originally constructed, but will require the demolition of surrounding associated infrastructure and later additions to the plant (process units). As discussed, the Huia Filter Station and its extent of place has been evaluated and has considerable historical heritage value. It also forms part of a group of places associated with Auckland's water supply in the Waitakere Ranges (Matthews and Matthews Sep 2015:52).

The Parker Road North WTP option is located immediately adjacent to the property containing Theet's Cottage, which is considered the oldest surviving building from Waiatarua and is on the schedule of Historic Heritage Places in the AUPOP (UPID00108) as Category B. However, the proposed development areas of this option do not appear to directly impact on the cottage or into the AUPOP Extent of Place.

Aerial photographs from 1940 shows a small house and shed on the property at 128 Parker Road in the location of the existing house on this property. The proposed administration buildings for the Parker Road North WTP option will impact on the house at 128 Parker Road but do not appear to impact on the shed. Should the Parker Road North WTP option be identified as a preferred option further archival research will need to be carried out to identify when the house in the 1940s aerial was constructed, whether the house, or any part of it survives or has been replaced by the existing house at 128 Parker Road and the heritage value of any surviving remains.

Black pines associated with the historic occupation of Endt Cottage may be located at 128 Parker Road, which is within the Parker Road North WTP option area and may be affected. The location of any of these trees on this property should be confirmed.

Early aerial photographs show a number of small buildings or houses on the Manuka WTP option area. These buildings no longer exist and the area is covered in regenerating native bush. There is no evidence from survey plans that these buildings existed prior to 1926 and are likely to be Huia Filter Station staff houses built in the c.1920s-1930s. However, should the Manuka WTP option be identified as a preferred option further archival research will need to be carried out to confirm these structures and when they were built.

The Manuka WTP option area has not been surveyed for archaeological or other historic heritage sites and the area appears to be relatively unmodified by modern activities. Therefore, there is the possibility that previously unrecorded archaeological or other historic heritage sites are present on this in this area.

Archaeological features and remains can take the form of burnt and fire cracked stones, charcoal, rubbish heaps including shell, bone and/or 19th century glass and crockery, ditches, banks, pits, old building foundations, artefacts of Maori and early European origin or human burials.

It is considered unlikely that any undetected archaeological or other historic heritage sites are present on the Existing Huia WTP option given the level of modification to this entire area since the original construction of the Huia Filter Station. Or within the Parker Road North and South WTP options, as the area has been surveyed and researched for such sites in the past.

Historic Heritage Legislation

There are two primary pieces of legislation protecting historic and cultural heritage in New Zealand. These are the Resource Management Act 1991 (RMA) and the Heritage New Zealand Pouhere Taonga Act 2014 (HNZA), which replaces the Historic Places Act 1993.

Resource Management Act 1991 Requirements

Section 6 of the RMA 1991 recognises as matters of national importance: ‘the relationship of Maori and their culture and traditions with their ancestral lands, water, sites, waahi tapu, and other taonga’ (S6(e)); and ‘the protection of historic heritage from inappropriate subdivision, use, and development’ (S6(f)).

Persons exercising functions and powers under the RMA are required under Sect 6 to recognise and provide for these matters of national importance when ‘*managing the use, development & protection of natural & physical resources*’. There is a duty to avoid, remedy, or mitigate any adverse effects on the environment arising from an activity (S17), including historic heritage.

Historic heritage is defined (S2) as ‘those natural and physical resources that contribute to an understanding and appreciation of New Zealand’s history and cultures, deriving from any of the following qualities: (i) archaeological; (ii) architectural; (iii) cultural; (iv) historic; (v) scientific; (vi) technological’. Historic heritage includes: ‘(i) historic sites, structures, places, and areas; (ii) archaeological sites; (iii) sites of significance to Maori,

including wahi tapu; (iv) surroundings associated with the natural and physical resources’.

Regional, district and local plans contain sections that help to identify, protect and manage archaeological and other heritage sites. The plans are prepared under the rules of the RMA. The Auckland Council District Plan – Operative Waitakere Section 2003 and the the Auckland Unitary Plan Operative in Part (AUPOP) are relevant to the proposed activity.

This desk-top assessment has established that one of the four proposed WTP Options will have significant adverse effects on historic heritage values by impacting on a known site, scheduled in the District Plan and/or AUPOP:

The Existing Huia WTP Option will retain the Huia Filter Station building, with the ongoing use of this heritage structure for which it was originally constructed, but will require the demolition of surrounding associated infrastructure and later additions to the plant (process units). The Huia Filter Station is included in the AUPOP schedule of Significant Historic Heritage Places (UPID00077) as a Category B item, with a defined Extent of Place. The Existing Huia WTP option will encroach on the Extent of Place and the Huia Filter Station surrounds.

Heritage New Zealand Pouhere Taonga Act 2014 Requirements

In addition to any requirements under the RMA, the HNZPTA protects all archaeological sites whether recorded or not, and they may not be damaged or destroyed unless an Authority to modify an archaeological site has been issued by Heritage NZ (Section 42).

An archaeological site is defined by the HNZPTA Section 6 as follows:

‘**archaeological site** means, subject to section 42(3), –

(a) any place in New Zealand, including any building or structure (or part of a building or structure) that –

(i) was associated with human activity that occurred before 1900 or is the site of the wreck of any vessel where the wreck occurred before 1900; and

(ii) provides or may provide, through investigation by archaeological methods, evidence relating to the history of New Zealand; and

(b) includes a site for which a declaration is made under section 43(1)’

Authorities to modify archaeological sites can be applied for either in respect to archaeological sites within a specified area of land (Section 44(a)), or to modify a specific archaeological site where the effects will be no more than minor (Section 44(b)), or for the purpose of conducting a scientific investigation (Section 44(c)). Applications that relate to sites of Maori interest require consultation with (and in the case of scientific investigations the consent of) the appropriate iwi or hapu and are subject to the recommendations of the Maori Heritage Council of Heritage NZ. In addition, an application may be made to carry out an exploratory investigation of any site or locality under Section 56, to confirm the presence, extent and nature of a site or suspected site.

Field survey of the selected new WTP option will be required to establish the effects on previously unknown archaeological values, and hence requirements under the HNZPTA. The Huia Filter Station dates from 1928 and therefore does not come within the definition

of an archaeological site in the HNZPTA. However, under Section 43(1) a place post-dating 1900 that could provide ‘significant evidence relating to the historical and cultural heritage of New Zealand’ can be declared by Heritage NZ to be an archaeological site. The Filter Station has not been declared to be an archaeological site at present.

Theet’s Cottage was built in 1880 and was originally located on the corner of West Coast Road and Kauri Loop Road, but was moved to its Parker Road site after 1978. While still retaining archaeological values within its built structure there are no associated buried archaeological remains within the Parker Road property.

Under Section 65 of the Act, Heritage NZ has the power to list significant historic places and areas, wahi tupuna, wahi tapu and wahi tapu areas on the New Zealand Heritage List. The purpose of listing is to inform members of the public and landowners about the values of significant places and to assist in their protection under the RMA. Heritage NZ would be considered an affected party in relation to any consent application affecting an item on the List.

The only historic place identified in the vicinity on the New Zealand Heritage List is Endt Cottage (Sunnydale) at 108 Parker Road, but this will not be affected.

Conclusions

This desk-top assessment has established that one of the four proposed WTP Options will have high adverse effects on historic heritage values by impacting on the defined Extent of Place of a known historic heritage place, which is scheduled in the AUPOP – Huia Filter Station schedule of Significant Historic Heritage Places (UPID00077) Category B. However, the actual Filter Station building will be retained with the ongoing use of this heritage structure for which it was originally constructed, but will require the demolition of surrounding associated infrastructure and later additions to the plant (process units).

The Manuka WTP option area has not been surveyed for archaeological or other historic heritage sites and the area appears to be relatively unmodified by modern activities. Therefore, there is the possibility that previously unrecorded archaeological or other historic heritage sites are present on this in this area. The AUPOP scheduled kauri tree (# 1836) located in the north-western corner of the Manuka Road WTP option area will not be impacted upon.

Should the Parker Road North WTP option be identified as a preferred option further archival research will need to be carried out to identify when the house in the 1940s aerial at 128 Parker Road was constructed, whether the house, or any part of it, survives or has been replaced by the existing house on this property and the heritage value of any surviving remains. Also, whether any black pines associated with the historic occupation of Endt Cottage may be located at 128 Parker Road. Theet’s Cottage, a scheduled Significant Historic Heritage Places in the AUPOP (UPID00108) with a Defined Extent of Place, located at 132 Parker Road within the Parker Road North WTP option area will not be directly impacted upon.

It is considered unlikely that any undetected archaeological or other historic heritage sites are present on the Existing Huia WTP option given the level of modification to this entire area since the original construction of the Huia Filter Station; or within the Parker Road North and South WTP options, as the area has been surveyed and researched for such sites in the past. See Table 3. For a comparison of the four options.

Table 3. Comparison and scoring of the four WTP options based on the identified effects on historic heritage for the purpose of a Multi-Criteria Analysis (MCA) assessment

New WTP Option	Effects on known historic heritage					Potential Effects on unknown historic heritage	Preferred Option (A - D*)	Explanation
Existing Huia WTP		X				Nil	D	The Huia Filter Station is included in the AUPOP schedule of Significant Historic Heritage Places (UPID00077) as a Category B item, with a defined Extent of Place. The Huia Filter Station building will be retained but demolition of surrounding associated infrastructure and later additions (process units). Development within the Huia Filter Station AUPOP scheduled Extent of Place and encroachment on surrounds. No recorded archaeological sites. Little potential for other unrecorded sites
Manuka WTP				X		Possible	B	AUPOP scheduled kauri tree in northwest corner can be avoided. Possible remains of 1920-30s WTP staff accommodation but likely of limited historic value. No recorded archaeological sites. Possibility of unrecorded sites.
Parker Road North WTP			X?	X		Unlikely	C	Theets Cottage at 132 Parker Road is included in the schedule of Significant Historic Heritage Places in the AUPOP (UPID00108) as Category B with a defined Extent of Place. Effects on this heritage place can be avoided. Some potential for other early historic structures and subsurface remains associated with early European settlers. Needs further research but likely to be of limited heritage value. No recorded archaeological sites. Little potential for other unrecorded sites. Recorded heritage trees at 128 Parker Road needs confirming.
Parker Road South WTP					X	Unlikely	A	No recorded archaeological or other historic heritage sites. Little potential for other unrecorded sites
	1. Very Significant Impact	2. High Impact	3. Moderate Impact	4. Slight Impact	5. Straight forward with positive or neutral impacts			

* A). Most preferred due to the least impacts on historic heritage values; D). Least preferred due to the most impacts on historic heritage values

RECOMMENDATIONS

- Once the new WTP is selected an assessment of effects (AEE) should be prepared to identify the actual and potential effects of the proposed activity on archaeological and other historic heritage sites. This will involve site survey of the new WTP and all associated infrastructure (i.e. piping, tunnels, pump stations) to verify the location and confirm the significance of heritage sites identified in this report and any previously unrecorded sites, and the adverse effects on those places.
- Since archaeological assessment cannot always detect wahi tapu or sites of traditional significance to Maori, the tangata whenua should be consulted regarding the possible existence of such sites in the vicinity of the proposed new WTP options.

BIBLIOGRAPHY

- Auckland Council Cultural Heritage Inventory, accessed at <http://maps.aucklandcouncil.govt.nz> and <https://chi.org.nz>.
- Burnett, Z. June 2013. Oratia Historical Thematic Study. Clough & Associates report prepared for Auckland Council.
- Clough, R. and D. Prince. Se 1995. Archaeological Survey of the Oratia Valley Structure Plan Area. Clough & Associates report prepared for Waitakere City Council.
- Clough, R. and D. Prince. Aug 1997. Parris Cross Road Subdivision, Waitakere City: Archaeological Survey for Resource Consent. Clough & Associates report prepared for Manukau Consultants.
- Clough, R. and K. Tatton. Mar 2006. Waitakere City Council Ecowater Twin Streams Project: Cultural Heritage Sites Preliminary Assessment. Clough & Associates report prepared for Waitakere City Council.
- Felgate, M 1996. Cultural Heritage Inventory: A Base Inventory for Waitakere City. Auckland Regional Council Technical Publication No. 73, Environment Division.
- Hayward, B.W. and J.T. Diamond. 1978. Prehistoric Archaeological Sites of the Waitakere Ranges and West Auckland. Auckland Regional Authority Parks Department, Auckland.
- Hayward, B.W. and J.T. Diamond. 1978a. Historic Archaeological Sites of the Waitakere Ranges, West Auckland. Auckland Regional Authority Parks Department, Auckland.
- Heritage NZ. 2006. Writing Archaeological Assessments. Archaeological Guidelines Series No. 2. New Zealand Historic Places Trust Pouhere Taonga (now Heritage NZ).
- Heritage NZ. 2014. Investigation and Recording of Buildings and Standing Structures. Archaeological Guidelines Series No. 1.
- Lawrence, J. 1989. The Archaeology of the Waitakere Ranges. Unpublished M.A Thesis, Department of Anthropology, University of Auckland.
- New Zealand Archaeological Association ArchSite Database, accessed at <http://www.archsite.org.nz>.
- New Zealand Heritage List, accessed at <http://www.historic.org.nz>
- Matthews and Matthews. Sep 2105. Huia Filter Station, Woodlands Park Road, Titirangi: Heritage Assessment. Prepared for Watercare Services Ltd, Issue No. 3 Ref 662.
- Matthews and Matthews. Sep 2015a. Nihotupu Filter Station, Woodlands Park Road, Titirangi: heritage Assessment. Prepared for Watercare Services Ltd Issue No. 3 Ref 562.
- Murdoch, G. 1990. Nga Tohu o Waitakere: the Maori Place Names of the Waitakere River Valley and its Environs; their Background History and an Explanation of their Meaning. In *West Auckland Remembers: A Collection of Historical Essays for the 1990 Commemoration*. Edited by James Northcote-Bade for the West Auckland Historical Society. Pp.7-32.
- New Zealand Heritage List, accessed at <http://www.historic.org.nz>.
- Opus International Consultants Ltd Jun 2009. Local Area Plan: Heritage Area Assessments. Prepared for Waitakere City Council.
- Simpson, P. 1993. Resource Management of Prehistoric Archaeological Sites in West Auckland, New Zealand. Unpublished MA Research Essay, Paper 03.603, Department of Anthropology, University of Auckland.

APPENDIX 1: SITE RECORD FORMS

CHI Places Number	2175	NZAA Site Number	
NZMS 260 map number	R11	Date of visit	
NZMS 260 map name	None	Type of site or area	Tree
NZMS 260 map edition		Name	Kauri
Grid references			
NZMG Easting:		NZMG Northing	
GPS Easting		GPS Northing	
NZTM Easting	1746208	NZTM Northing	5910763
Grid Reference Source		GIS Calculated	
1. Aids to relocation of site (attach a sketch map):			
<i>In this section just enter the key location details, from closest to furthest from the site e.g. Home Bay; Motutapu Island; Hauraki Gulf; Auckland City. Enter the specific details about how to get to the site at the beginning of the DESCRIPTION field.</i>			
Auckland Centennial Memorial Park Manuka Road Woodlands Park Road Woodlands Titirangi			
NZAA Record Status Identify how comprehensive record is (e.g. Brief or Detailed) and whether any location maps or site sketch plans are attached.			
2. State of site and possible future damage:			
3. Description of site (supply full details, history, local environment, references, sketches, etc. If extra sheets are attached include a summary here)			
The tree is located at Woodlands Park Road, corner Manuka Road.			
Additional Notes:			
4. Owner		Tenant/Manager	
Owner Address		Tenant/Manager Address	
5. Nature of information (hearsay, brief or extended visit, etc.)			
Aerial photographs (reference numbers, and clarity of site)			
Photographs (reference numbers, and where they are held)			
6. Reported by	Catherine Liang	Date recorded	15/12/1993
Filekeeper		Date (NZAA SRF Entry Date)	
Address			
7. Keywords	INDIGENOUS TREE KAURI PROPOSED PLAN SCHEDULE TREE		
8. New Zealand Register of Archaeological Sites (for office use)			
NZHPT Site Field Code			
Latitude S		Latitude E	
	Type of site		Present condition and future danger of destruction

CHI Places Number	2316	NZAA Site Number				
NZMS 260 map number	R11	Date of visit	15/12/1993			
NZMS 260 map name	None	Type of site or area	Tree Trees			
NZMS 260 map edition		Name	Black Pine Trees Pine			
Grid references						
NZMG Easting:	2653910	NZMG Northing	6473380			
GPS Easting		GPS Northing				
NZTM Easting	1743494	NZTM Northing	5911656			
Grid Reference Source		NZMS 260 Map Sheet				
1. Aids to relocation of site (attach a sketch map):						
<i>In this section just enter the key location details, from closest to furthest from the site e.g. Home Bay; Motutapu Island; Hauraki Gulf; Auckland City. Enter the specific details about how to get to the site at the beginning of the DESCRIPTION field.</i>						
94-108 Parker Road 128 Parker Rd Oratia Manukau Auckland						
NZAA Record Status identify how comprehensive record is (e.g. Brief or Detailed) and whether any location maps or site sketch plans are attached.						
Brief						
2. State of site and possible future damage:						
Unknown						
3. Description of site (-cb-supply full details, history, local environment, references, sketches, etc. If extra sheets are attached include a summary here-)						
Pine. Trunk diameter: 1400x400mm. In property of Endt Cottage orig name Sunnydale.(CHI #3763)						
Additional Notes:						
Additional information by K Marnett (1982): This registration is for a stand of 3 Black Pine trees (pinus nigra) which spread over an area of 104 sq.m. 'Planted by either J.R.Thompson (1868-1881) or T.Donnelly (1881-1894) in 1880. The trees are associated with possibly the oldest building in Waitemata City and built around 1850. These trees are included in the Waitemata City Council register of historic objects'. Marnett 1982. The height is 13m, canopy spread 104m and trunk girth 2.85m.						
4. Owner	Endt DJ & AM	Tenant/Manager				
Owner Address	128 Parker Rd Oratia	Tenant/Manager Address				
5. Nature of information (heresay, brief or extended visit, etc.)						
Aerial photographs (reference numbers, and clarity of site)						
Photographs (reference numbers, and where they are held)						
6. Reported by	K Marnett Catherine Liang	Date recorded	1982 15/12/1993			
Filekeeper		Date (NZAA SRF Entry Date)				
Address						
7. Keywords	EXOTIC TREE PINE PROPOSED PLAN SCHEDULE TREE					
8. New Zealand Register of Archaeological Sites (for office use)						
NZHPT Site Field Code						
Latitude S		Latitude E				

CHI Places Number	2335	NZAA Site Number	
NZMS 260 map number	R11	Date of visit	29/04/2009
NZMS 260 map name	Auckland	Type of site or area	Tree
NZMS 260 map edition	Edition 1 1981	Name	Oak I Oak Tree
Grid references			
NZMG Easting:	2653620	NZMG Northing	6473052
GPS Easting		GPS Northing	
NZTM Easting	1743204	NZTM Northing	5911327
Grid Reference Source		NZMS 260 Map Sheet	
1. Aids to relocation of site (attach a sketch map):			
<i>In this section just enter the key location details, from closest to furthest from the site e.g. Home Bay; Motutapu Island; Hauraki Gulf; Auckland City. Enter the specific details about how to get to the site at the beginning of the DESCRIPTION field.</i>			
128 Parker Road I Oratia			
NZAA Record Status Identify how comprehensive record is (e.g. Brief or Detailed) and whether any location maps or site sketch plans are attached.			
2. State of site and possible future damage:			
I Good, pruned because over footpath.			
I Additional information by Carole-Lynne Kerrigan (00/06/2009): Destroyed.			
3. Description of site (supply full details, history, local environment, references, sketches, etc. If extra sheets are attached include a summary here)			
Oak tree			
Additional Notes:			
I Additional information by Carole-Lynne Kerrigan (00/06/2009): Tree no longer exists.			
4. Owner	Lafalali S L Samuel & Seia Fi	Tenant/Manager	
Owner Address	41 Tabitha Cres	Tenant/Manager Address	
5. Nature of information (heresay, brief or extended visit, etc.)			
Aerial photographs (reference numbers, and clarity of site)			
Photographs (reference numbers, and where they are held)			
6. Reported by	Waitakere City Council I Carole-Lynne Kerrigan	Date recorded	15/12/1993 I 00/06/2009
Filekeeper		Date (NZAA SRF Entry Date)	
Address			
7. Keywords	OAK I Waitakere Ranges Heritage Area		
8. New Zealand Register of Archaeological Sites (for office use)			
NZHPT Site Field Code			
Latitude S		Latitude E	

CHI Places Number	3397	NZAA Site Number	
NZMS 260 map number	R11	Date of visit	
NZMS 260 map name	None	Type of site or area	BUILDING-INDUSTRIAL
NZMS 260 map edition		Name	Huia Filter Station
Grid references			
NZMG Easting:	2656466	NZMG Northing	6472397
GPS Easting		GPS Northing	
NZTM Easting	1746051	NZTM Northing	5910678
Grid Reference Source		NZMS 260 Map Sheet	
1. Aids to relocation of site (attach a sketch map):			
<i>In this section just enter the key location details, from closest to furthest from the site e.g. Home Bay; Motutapu Island; Hauraki Gulf; Auckland City. Enter the specific details about how to get to the site at the beginning of the DESCRIPTION field.</i>			
Woodlands Park Road Manuka Road (Corner) Woodland Park Roads Titirangi Waitakere Ranges Waitakeres			
NZAA Record Status Identify how comprehensive record is (e.g. Brief or Detailed) and whether any location maps or site sketch plans are attached.			
2. State of site and possible future damage:			
very good			
3. Description of site (cb=supply full details, history, local environment, references, sketches, etc. If extra sheets are attached include a summary here-cb=)			
1 1928 plastered single storey building with arched windows fanlights, brick facing on side with 2 steel doors, mild steel window frames.			
Additional Notes:			
1 Additional information from WCC District Plan online (accessed on 06/04/2010). Located on Cnr Manuka & Woodland Park Roads, Titirangi. The form and scale of the 1928 Huia Filter Station building and 1947 additions, including decorative facade elements and excluding later additions. Original (1928-1947) windows and doors. The basic form of the 1928 filter tanks (but not surfaces, which may be subject to maintenance work and repair from time to time). Significance attributed to historical, architectural and pattern values. External - II (specific elements). Internal - III (specific elements). Original (1928-1947) internal fittings in the 1928 building and 1947 addition.			
4. Owner		Tenant/Manager	
Owner Address		Tenant/Manager Address	
5. Nature of information (hearsay, brief or extended visit, etc.)			
Aerial photographs (reference numbers, and clarity of site)			
Photographs (reference numbers, and where they are held)			
6. Reported by	Waitakere City Council Waitakere City Council	Date recorded	15/12/1993 06/04/2010
Filekeeper		Date (NZAA SRF Entry Date)	
Address			
7. Keywords	CEMENT RENDER EXPOSED BRICK BUILDING FILTER STATION Proposed Auckland Unitary Plan PROPOSED PLAN SCHEDULE UP Category B UP1D00077		

CHI Places Number	3419	NZAA Site Number			
NZMS 260 map number	R11	Date of visit	00/06/2006		
NZMS 260 map name	None	Type of site or area	Building - Industrial		
NZMS 260 map edition		Name	Nihotupu Filter Station		
Grid references					
NZMG Easting:	2656830	NZMG Northing	6472580		
GPS Easting		GPS Northing			
NZTM Easting	1746421	NZTM Northing	5910842		
Grid Reference Source		GIS Calculated			
1. Aids to relocation of site (attach a sketch map):					
<i>In this section just enter the key location details, from closest to furthest from the site e.g. Home Bay; Motutapu Island; Hauraki Gulf; Auckland City. Enter the specific details about how to get to the site at the beginning of the DESCRIPTION field.</i>					
219 Scenic Drive Scenic Drive Woodlands Park Road Titirangi Waitakere Ranges Regional Park Waitakere Ranges Waitakere					
NZAA Record Status Identify how comprehensive record is (e.g. Brief or Detailed) and whether any location maps or site sketch plans are attached.					
2. State of site and possible future damage:					
I Good.					
I Additional information by Robert Brassey (10/06/2006). Deteriorating due to vandalism, leaking roofs					
3. Description of site (cb-supply full details, history, local environment, references, sketches, etc. If extra sheets are attached include a summary here)					
I Two storey plastered building 6 panel mild steel framed windows, decorative overhang overfronts, has had vertical extension (2 storeyed), a symmetrical building. Scheduled Category II.					
Additional Notes:					
I Additional data by Robert Brassey (10/06/2006). A decision was made in late 1927 to erect an identical (to the Nihotupu and Waitakere stations) filter station at Titirangi for the Upper Hula supply that was due to be commissioned in 1929. It was constructed during 1928 and was in service at the completion of the Upper Hula dam in late 1929 (SE 355:91).					
4. Owner	Swinburn P F	Tenant/Manager			
Owner Address	35 Carter Road, Oratia	Tenant/Manager Address			
5. Nature of information (heresay, brief or extended visit, etc.)	SE 355				
Aerial photographs (reference numbers, and clarity of site)					
Photographs (reference numbers, and where they are held)					
6. Reported by	Waitakere City Council Robert Brassey	Date recorded	15/12/1993 10/06/2006		
Filekeeper		Date (NZAA SRF Entry Date)			
Address					
7. Keywords	CEMENT RENDER CIVIC BUILDING DISTRICT PLAN SCHEDULE I FILTER STATION INDUSTRIAL Nihotupu Filter Station Proposed Auckland Unitary Plan PROPOSED PLAN SCHEDULE I UP Category B UPID00086				

CHI Places Number	3763	NZAA Site Number	
NZMS 260 map number	R11	Date of visit	
NZMS 260 map name	Auckland	Type of site or area	BUILDING-DWELLING
NZMS 260 map edition	Edition 1 1981	Name	Endt Cottage Sunnydale
Grid references			
NZMG Easting:	2653940	NZMG Northing	6473146
GPS Easting		GPS Northing	
NZTM Easting	1743393	NZTM Northing	5911573
Grid Reference Source		GIS Calculated	
1. Aids to relocation of site (attach a sketch map):			
<i>In this section just enter the key location details, from closest to furthest from the site e.g. Home Bay; Motutapu Island; Hauraki Gulf; Auckland City. Enter the specific details about how to get to the site at the beginning of the DESCRIPTION field.</i>			
108 Parker Road Oratia West Auckland			
NZAA Record Status Identify how comprehensive record is (e.g. Brief or Detailed) and whether any location maps or site sketch plans are attached.			
2. State of site and possible future damage:			
3. Description of site (cb-supply full details, history, local environment, references, sketches, etc. If extra sheets are attached include a summary here)			
Endt Cottage - original name Sunnydale. This is probably the oldest remaining building in Waitakere City being built around 1850. It is a large cottage built largely from pitsawn kauri timber. The age and construction materials make this building worthy of protection. Large oak tree, subtropical fruit orchard, possibly the oldest house built in Waitakere City, built 1850, probably by Mr J Thomson, single storey wooden structure with a steep gable roof and open verandahs on 3 sides			
Additional Notes:			
4. Owner	DJ & AM Endt	Tenant/Manager	
Owner Address		Tenant/Manager Address	
5. Nature of information (heresay, brief or extended visit, etc.)		Scheme	
Aerial photographs (reference numbers, and clarity of site)			
Photographs (reference numbers, and where they are held)			
6. Reported by	Catherine Liang	Date recorded	15/12/93
Filekeeper		Date (NZAA SRF Entry Date)	
Address			
7. Keywords	COTTAGE HOUSE - HISTORIC NZHPT Register PITSAWN KAURI TIMBER Proposed Auckland Unitary Plan PROPOSED PLAN SCHEDULE UP Category B UPID00109		
8. New Zealand Register of Archaeological Sites (for office use)			
NZHPT Site Field Code			
Latitude S		Latitude E	

CHI Places Number	3765	NZAA Site Number			
NZMS 260 map number	R11	Date of visit			
NZMS 260 map name	Auckland	Type of site or area	BUILDING-DWELLING		
NZMS 260 map edition	Edition 1 1981	Name	Theets' Cottage		
Grid references					
NZMG Easting:	2653754	NZMG Northing	6472869		
GPS Easting		GPS Northing			
NZTM Easting	1743177	NZTM Northing	5911287		
Grid Reference Source		GIS Calculated			
1. Aids to relocation of site (attach a sketch map):					
In this section just enter the key location details, from closest to furthest from the site e.g. Home Bay; Motutapu Island; Hauraki Gulf; Auckland City. Enter the specific details about how to get to the site at the beginning of the DESCRIPTION field.					
132 Parker Road Oratia					
NZAA Record Status Identify how comprehensive record is (e.g. Brief or Detailed) and whether any location maps or site sketch plans are attached.					
2. State of site and possible future damage:					
substantially altered but plans to restore.					
3. Description of site (supply full details, history, local environment, references, sketches, etc. If extra sheets are attached include a summary here-)					
This was built in 1880 on the corner of West Coast and Kauri Roads and is the oldest surviving building from Waiatarua. From 1927 to 1978, it was part of the Girl Guides "Otimai" camp. It has been substantially altered over the years, but the present owners intend to restore it.					
Additional Notes:					
Additional information by Rachel Ford (03/11/2009): There are three sites in the CHI which pertain to 'Theets House(s)'. One was the original single story home on the corner of West Coast Road and Kauri Loop Road [CHI 3502]. One is the second story house built opposite this [CHI 3679], and the third is the location to where the original house was moved to on Parker Road [CHI 3765]. "About that time [1914] the Captain had a new two-story house built on the corner of Kauri and West Coast Roads [CHI 3679]. His original cottage was sold in 1927 to the first Chief-commissioner of the Guides, Mrs W.R. Wilson. She gifted it with 4 1/2 acres of bush to the Girl Guide movement, and it was named 'Otimai' meaning 'Welcome, come and stay'. A new building has been erected there, and the original cottage bought and moved by Russell Gash and his son Graeme to Parker Road [CHI 3765]." Extract from "Oratia: My Valley; W.R. Allen - pg 35". The condition of all three sites (the 2 houses and original house site) is unknown. Additional information added by Auckland Council (2014): Scheduled in Proposed Auckland Unitary Plan Category B. Address updated from 104A Parker Road to 132 Parker Road.					
4. Owner	Gash RW	Tenant/Manager			
Owner Address	140 Parker Rd Oratia	Tenant/Manager Address			
5. Nature of information (hearsay, brief or extended visit, etc.)		Scheme			
Aerial photographs (reference numbers, and clarity of site)					
Photographs (reference numbers, and where they are held)					
6. Reported by	Catherine Liang	Date recorded	15 12 93		
Filekeeper		Date (NZAA SRF Entry Date)			

Address			
7. Keywords		COTTAGE HOUSE - HISTORIC OTIMAI CAMP Proposed Auckland Unitary Plan PROPOSED PLAN SCHEDULE UP Category B UPID00108	
8. New Zealand Register of Archaeological Sites (for office use)			
NZHPT Site Field Code			
Latitude S		Latitude E	
	Type of site		Present condition and future danger of destruction
	Local environment today		Security Code
	Land classification		Local body
Extra information required by CHI			
Local Authority		Waikare City Council	
ArcView Category		Historic Structure	
Biblio References			