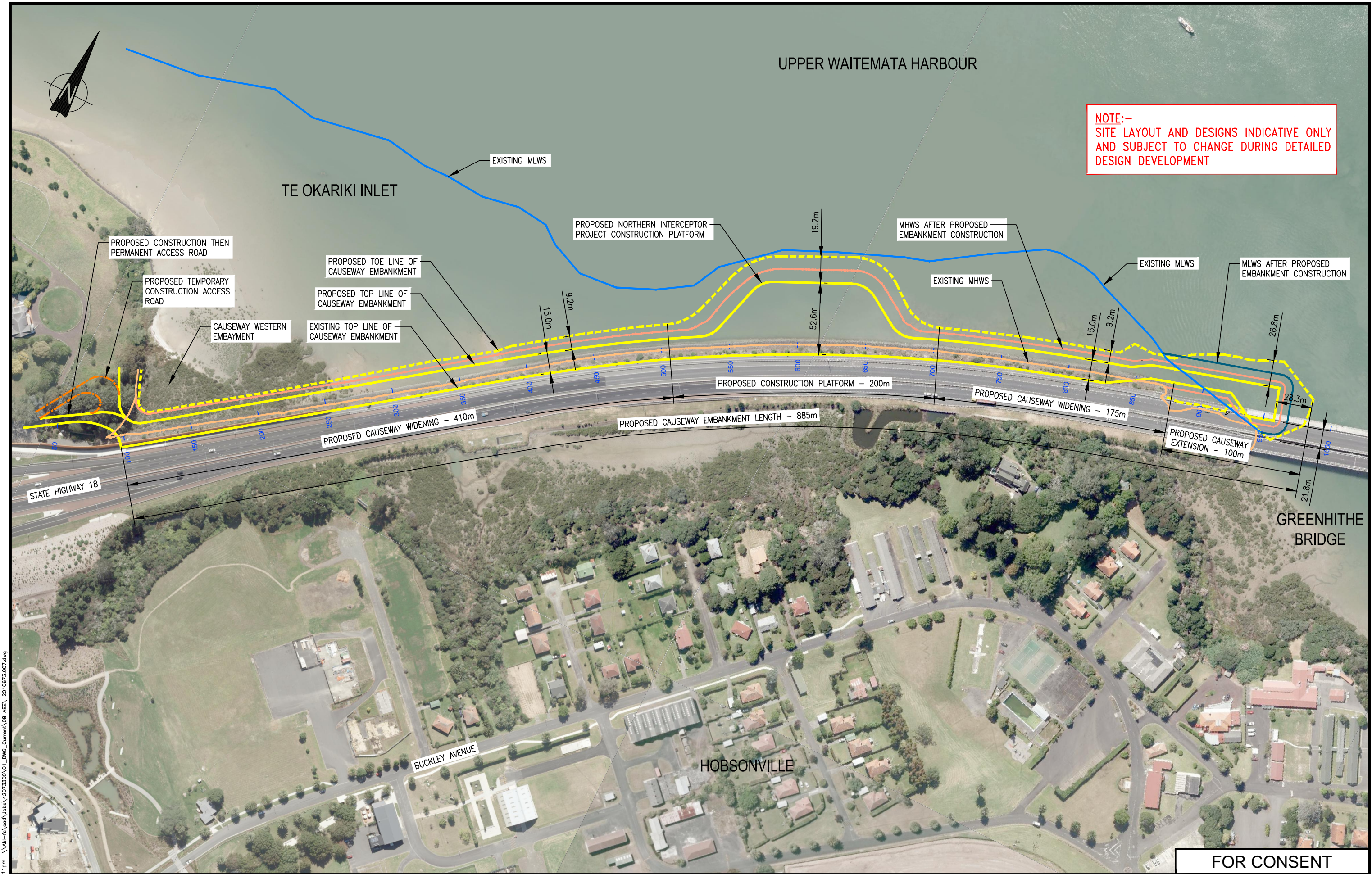


GREENHITHE BRIDGE WATERMAIN DUPLICATION DRAWINGS

DRAWING No.	DRAWING TITLE
	01 GENERAL
2010673.001	DRAWINGS COVER SHEET
2010673.002	DRAWING INDEX SHEET
2010673.006	SCOPE OF RESOURCE CONSENTS
2010673.007	CAUSEWAY LAYOUT
2010673.008	CAUSEWAY LAYOUT - CAUSEWAY WESTERN EMBAYMENT - CONSTRUCTION ACCESS AND LAY DOWN AREA - LAYOUT PLAN
	GEOTECHNICAL DESIGN
2010673.850	CAUSEWAY DESIGN SECTION LOCATIONS - SHEET 1 OF 2
2010673.851	CAUSEWAY DESIGN SECTION LOCATIONS - SHEET 2 OF 2
2010673.852	CAUSEWAY DESIGN SECTIONS A & C
2010673.853	CAUSEWAY DESIGN SECTIONS B & D
2010673.854	CAUSEWAY DESIGN SECTIONS E
2010673.855	CAUSEWAY DESIGN SECTIONS F
	02 CIVIL
2010674.001	LOCATION PLAN
2010674.002	GBWD PIPELINE LONGITUDINAL SECTION - SHEET 1 OF 3
2010674.003	GBWD PIPELINE LONGITUDINAL SECTION - SHEET 2 OF 3
2010674.004	GBWD PIPELINE LONGITUDINAL SECTION - SHEET 3 OF 3
2010674.005	NH1 TO GBWD PIPELINE CROSS CONNECTION (WEST) - PLAN AND LONG SECTION
2010674.006	PIPE TRANSITION AT EASTERN ABUTMENT AND NH1 TO NH2 CROSS CONNECTION
2010674.007	PIPE TRANSITION STRUCTURE AT WESTERN ABUTMENT - LAYOUT PLAN
2010674.030	STORMWATER CULVERT EXTENSIONS - SECTIONS A-A AND B-B
2010674.031	STORMWATER CULVERT EXTENSIONS - SECTIONS C-C AND D-D
2010674.032	STORMWATER CULVERT EXTENSIONS - SECTION E-E
2010674.040	EROSION AND SEDIMENT CONTROL ARRANGEMENT - LOCATION PLAN
2010674.041	EROSION AND SEDIMENT CONTROL ARRANGEMENT - WA 1, 2 AND 3 EROSION AND SEDIMENT CONTROL LOCATION PLAN
2010674.042	EROSION AND SEDIMENT CONTROL ARRANGEMENT - WA 7 EROSION AND SEDIMENT CONTROL LOCATION PLAN
2010674.043	EROSION AND SEDIMENT CONTROL ARRANGEMENT - STABILISED ENTRANCE AND SUPER SILT FENCE DETAIL
2010674.044	EROSION AND SEDIMENT CONTROL ARRANGEMENT - CATCHPIT PROTECTION, RUNOFF DIVERSION BUND AND CAUSEWAY WIDENING ARRANGEMENT
	03 STRUCTURAL
2010675.003	GREENHITHE BRIDGE WATERMAIN DUPLICATION AND CAUSEWAY - PIPE SUPPORT BRACKETS - DETAILS
	BOFFA MISKELL LTD
A14192-BASE1-20150610	INDICATIVE LANDSCAPE CONCEPT PLAN

FOR CONSENT

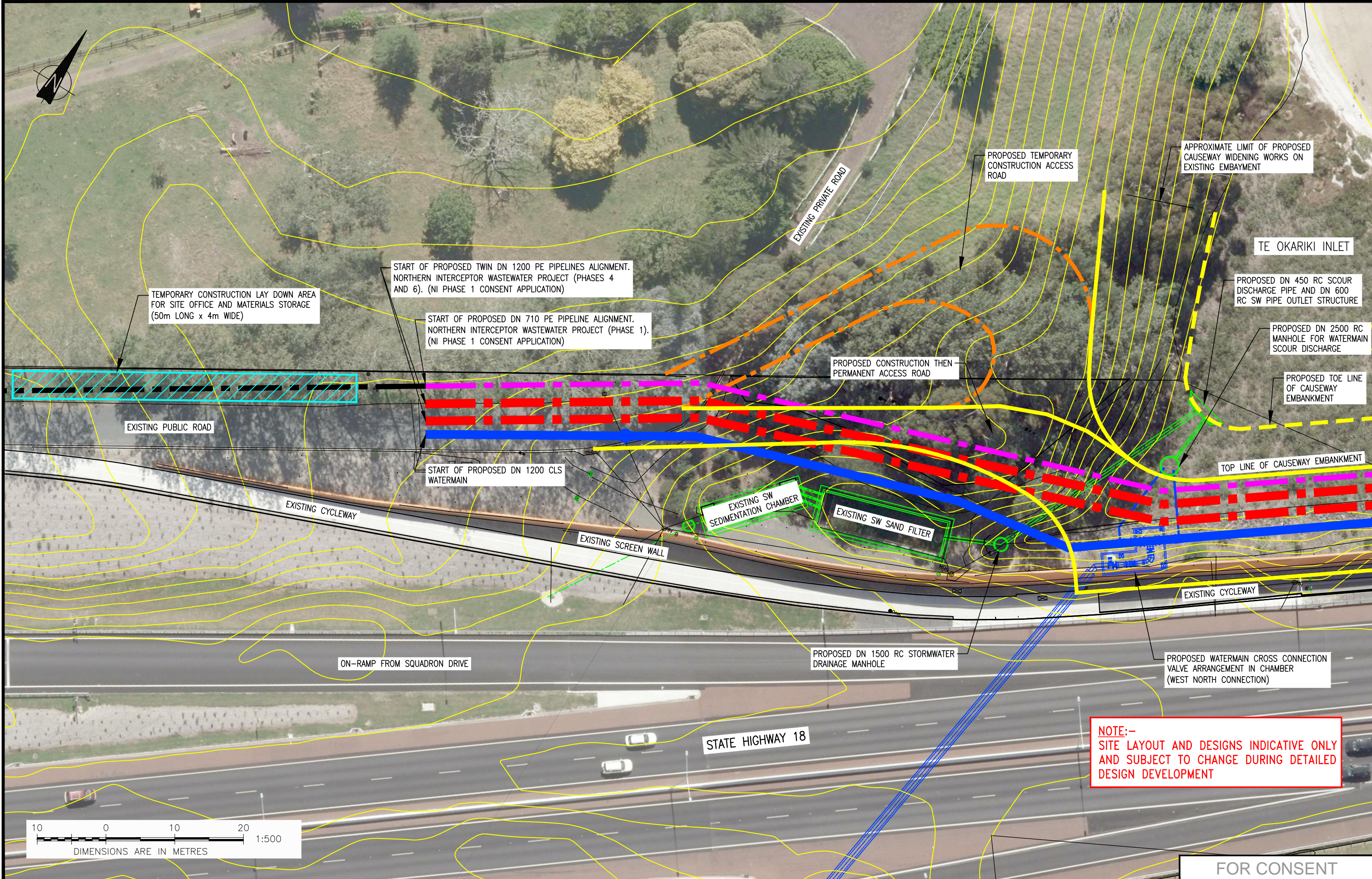
				DESIGNED	A.T.S.	02.15	OPERATIONS	 Watercare <small>COPYRIGHT - This drawing, the design concept, remain the exclusive property of Watercare Services Limited and may not be used without approval. Copyright reserved.</small>	GREENHITHE BRIDGE WATERMAIN DUPLICATION AND CAUSEWAY	CAD FILE 2010673.002 DATE 01.07.15	
				DES. CHECKED	A.H.	02.15				ORIGINAL SCALE A3 CONTRACT No. —	
				DRAWN	H.L.A.	02.15				NO SCALE	
				DWG. CHECKED	A.T.S.	02.15					
				PROJECT LEADER	M.A.E.	02.15					
				INFRASTR APP'D							
3	01.07.15	ISSUED FOR CONSENT	A.T.S.	M.A.E.			INFRASTRUCTURE		DRAWING INDEX	REF No. —	ISSUE —
2	09.03.15	ISSUED FOR CONSENT	H.L.A.	M.A.E.						DWG No. 2010673.002	3
1	13.02.15	ISSUED FOR CONSENT	P.K.	M.A.E.							
ISSUE	DATE	AMENDMENT	BY	APPD.							



NOTE:-
SITE LAYOUT AND DESIGNS INDICATIVE ONLY
AND SUBJECT TO CHANGE DURING DETAILED
DESIGN DEVELOPMENT

FOR CONSENT

Plot Dates: Jul 09, 2015						DESIGNED	Y.T.	02.15	OPERATIONS	 Watercare <small>COPYRIGHT - This drawing, the design concept, remain the exclusive property of Watercare Services Limited and may not be used without approval. Copyright reserved.</small>	GREENHITHE BRIDGE WATERMAIN DUPLICATION AND CAUSEWAY CAUSEWAY LAYOUT	CAD FILE 2010673.007		DATE 01.07.15	
						DES. CHECKED	A.H.	02.15				ORIGINAL SCALE A3		CONTRACT No.	
						DRAWN	H.L.A.	02.15				1:2,500		-	
	3	01.07.15	ISSUED FOR CONSENT		A.T.S.	M.A.E.	DWG. CHECKED	Y.T.	02.15			REF No.		ISSUE	
	2	09.03.15	ISSUED FOR CONSENT		H.L.A.	M.A.E.	PROJECT LEADER	M.A.E.	02.15			-		-	
	1	13.02.15	ISSUED FOR CONSENT		P.K.	M.A.E.	INFRASTR APP'D					DWG No.		2010673.007	
	ISSUE	DATE	AMENDMENT		BY	APPD.						INFRASTRUCTURE			



DESIGNED		A.T.S.	03.15	OPERATIONS	INFRASTRUCTURE
DES. CHECKED		M.A.E.	03.15		
DRAWN		A.T.S.	03.15		
DWG. CHECKED		M.A.E.	03.15		
PROJECT LEADER		M.A.E.	03.15	INFRASTRUCTURE	
INFRASTR APP'D					
ISSUE	DATE	AMENDMENT	BY	APPD.	
2	01.07.15	ISSUED FOR CONSENT	A.T.S.	M.A.E.	
1	09.03.15	ISSUED FOR CONSENT	H.L.A.	A.T.S.	

GREENHITHE BRIDGE WATERMAIN DUPLICATION AND CAUSEWAY CAUSEWAY LAYOUT

CAUSEWAY WESTERN EMBAYMENT – CONSTRUCTION ACCESS AND LAY DOWN AREA – LAYOUT PLAN

CAD FILE 2010674.008

DATE 01.07.15

ORIGINAL SCALE A3 1:500

CONTRACT No. –

REF No. –

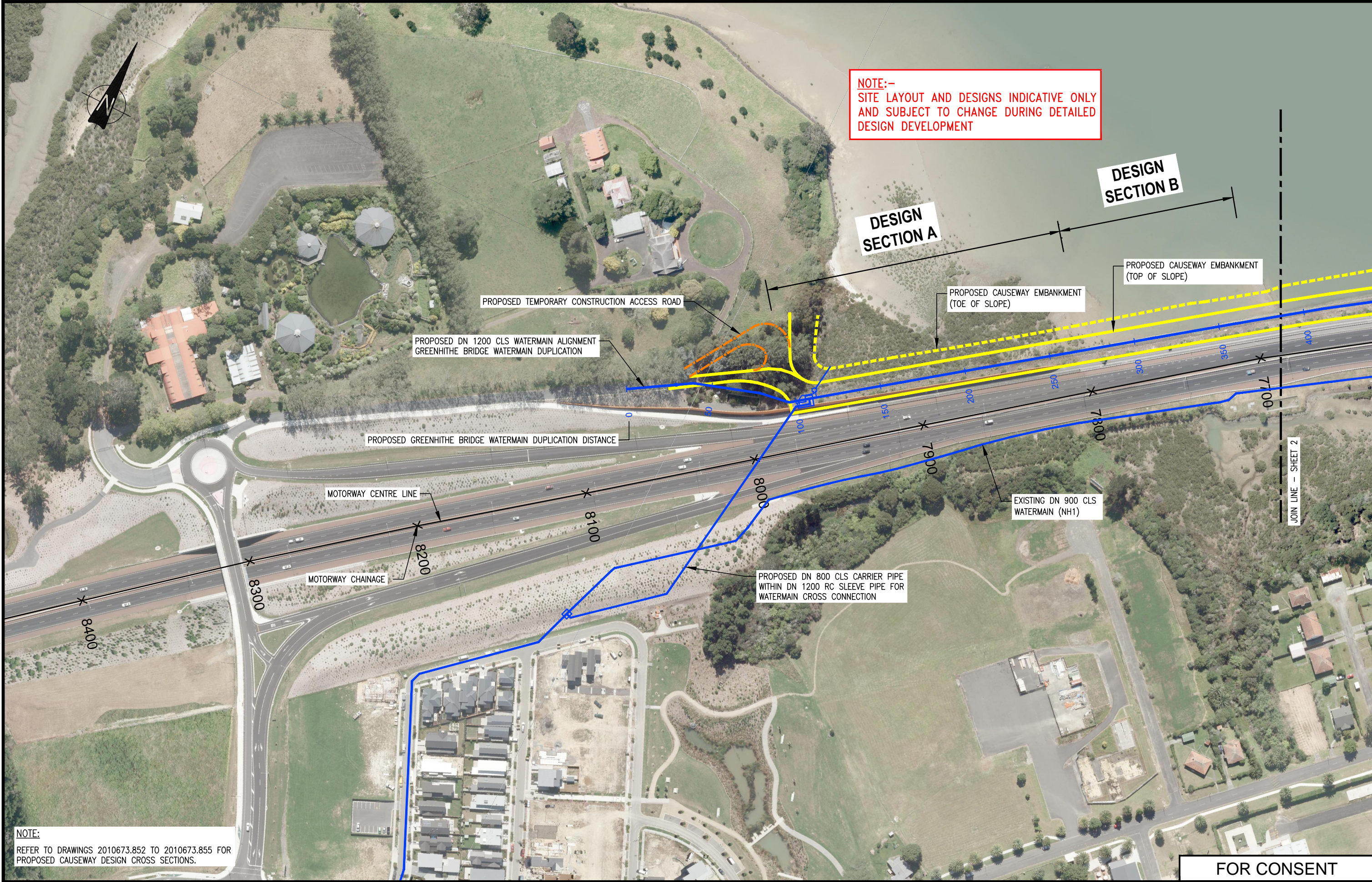
ISSUE –

DWG No. 2010673.008

2

FOR CONSENT

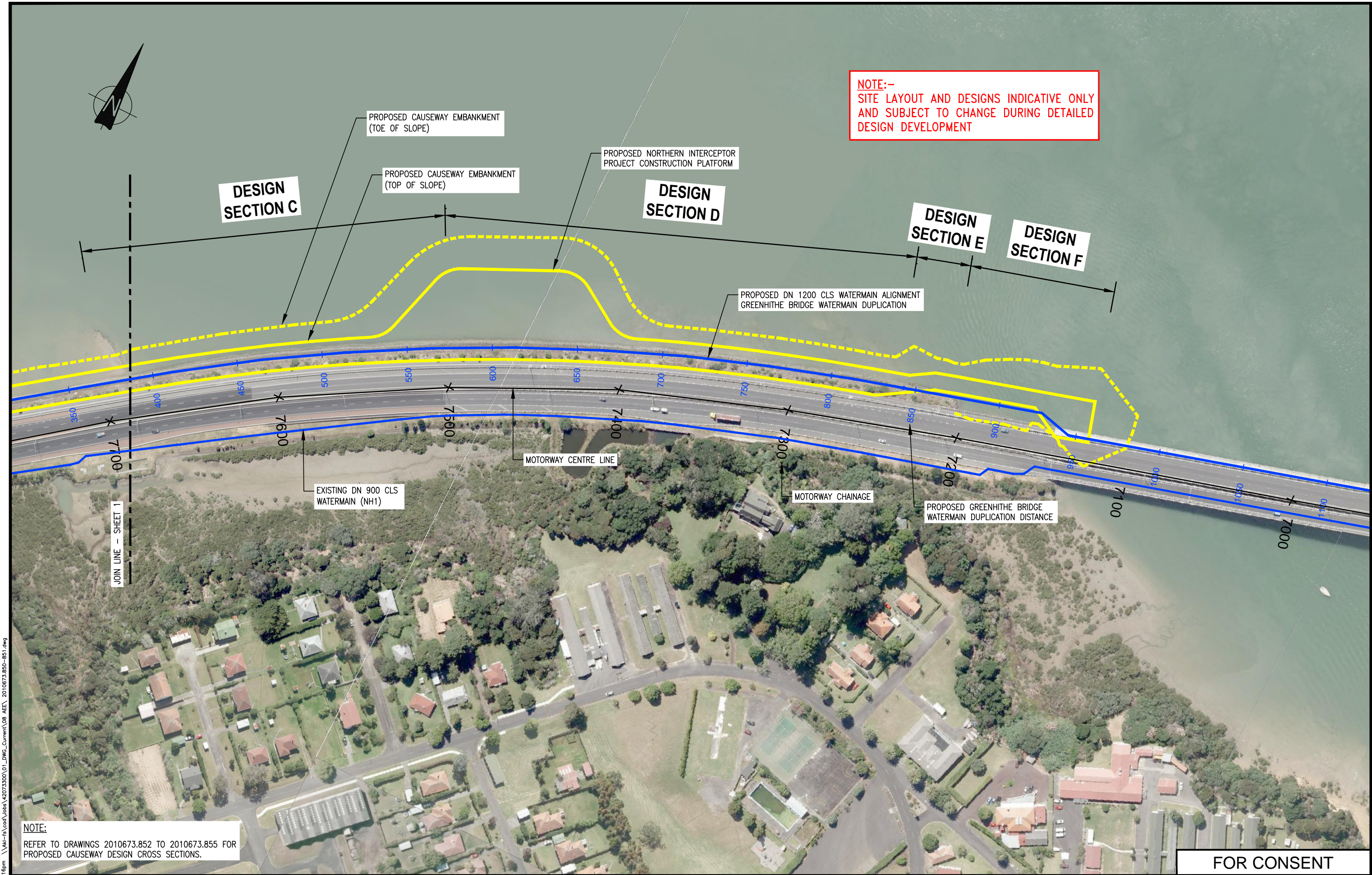
Plot Date: Jul 09, 2015 12:13pm \\uk-rs\cad\Nobsa\2073300\01_DWG_Current\08_AEE\ 2010673.008.dwg



NOTE:
REFER TO DRAWINGS 2010673.852 TO 2010673.855 FOR
PROPOSED CAUSEWAY DESIGN CROSS SECTIONS.

FOR CONSENT

					DESIGNED	Y.T.	10.14	OPERATIONS	 Watercare <small>COPYRIGHT - This drawing, the design concept, remain the exclusive property of Watercare Services Limited and may not be used without approval. Copyright reserved.</small>	GREENHITHE BRIDGE WATERMAIN DUPLICATION AND CAUSEWAY GEOTECHNICAL DESIGN CAUSEWAY DESIGN SECTION LOCATIONS – SHEET 1 OF 2	CAD FILE 2010673.850–851		DATE 01.07.15	
					DES. CHECKED	A.H.	10.14				ORIGINAL SCALE A3		CONTRACT No.	
					DRAWN	H.L.A.	10.14				1:2,000		–	
3	01.07.15	ISSUED FOR CONSENT	A.T.S.	M.A.E.	DWG. CHECKED	Y.T.	10.14	INFRASTRUCTURE	REF No.		–	ISSUE		
2	09.03.15	ISSUED FOR CONSENT	H.L.A.	M.A.E.	PROJECT LEADER	M.A.E.	10.14		–		–			
1	13.02.15	ISSUED FOR CONSENT	H.L.A.	M.A.E.	INFRASTR APP'D				DWG No.		2010673.850			
ISSUE	DATE	AMENDMENT	BY	APPD.							3			



Plot Dates: Jul 09, 2015						DESIGNED	Y.T.	10.14	OPERATIONS	 Watercare <small>COPYRIGHT - This drawing, the design concept, remain the exclusive property of Watercare Services Limited and may not be used without approval. Copyright reserved.</small>	GREENHITHE BRIDGE WATERMAIN DUPLICATION AND CAUSEWAY GEOTECHNICAL DESIGN				CAD FILE 2010673.850-851		DATE 01.07.15	
						DES. CHECKED	A.H.	10.14			ORIGINAL SCALE A3 1:2,000		CONTRACT No. —					
						DRAWN	H.L.A.	10.14										
	3	01.07.15	ISSUED FOR CONSENT		A.T.S.	M.A.E.	DWG. CHECKED	Y.T.	10.14				REF No. —		ISSUE —			
	2	09.03.15	ISSUED FOR CONSENT		H.L.A.	M.A.E.	PROJECT LEADER	M.A.E.	10.14									
	1	13.02.15	ISSUED FOR CONSENT		P.K.	M.A.E.	INFRASTR'R APP'D											
	ISSUE	DATE	AMENDMENT		BY	APPD.					INFRASTRUCTURE			DWG No. 2010673.851		3		

NORTH SIDE



CAUSEWAY WIDENING FOR PIPELINES
TYPICAL CROSS SECTION VIEW TO WEST

AT SECTION A – PIPELINE DISTANCE 96m TO 270m (MOTORWAY CHAINAGE 7800m–7974m)

AT SECTION C – PIPELINE DISTANCE 371m TO 574m (MOTORWAY CHAINAGE 7500m–7700m)

REFER TO DRAWING 2010673.850 TO 851 FOR DESIGN SECTION LOCATIONS.

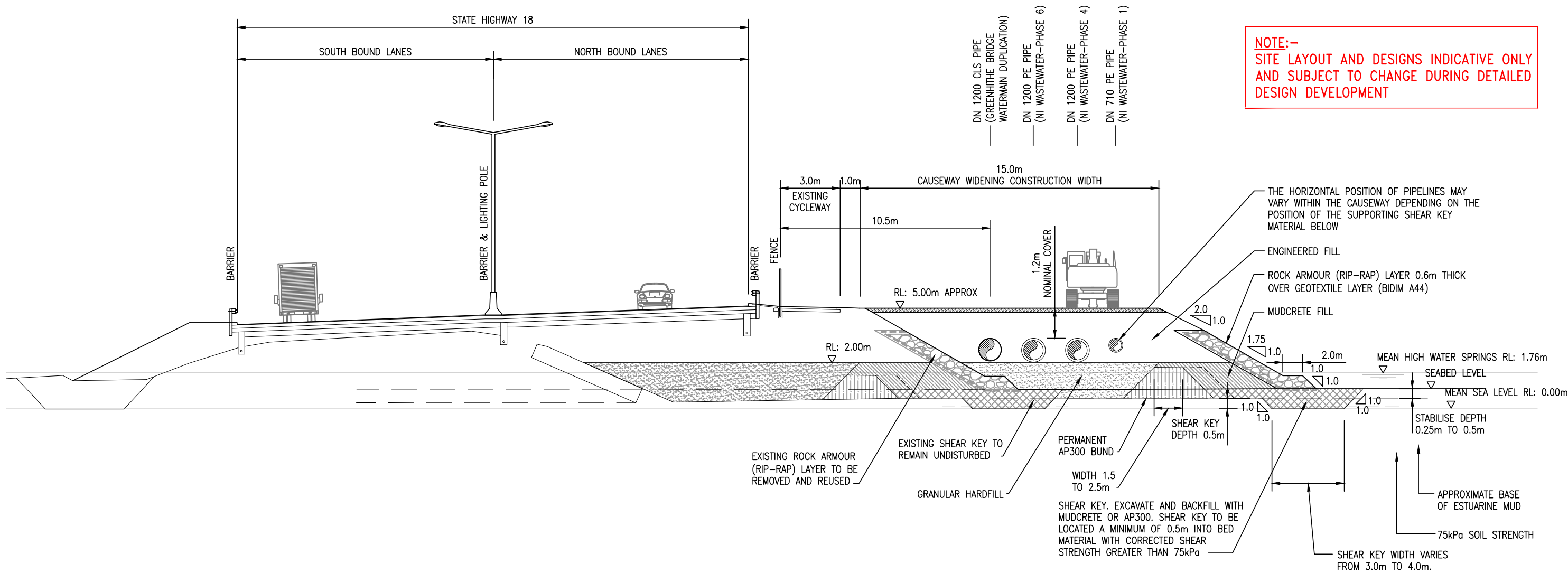
FOR CONSENT

						DESIGNED	M.J.	10.14	SIGNATORY 1	 Watercare <small>COPYRIGHT - This drawing, the design concept, remain the exclusive property of Watercare Services Limited and may not be used without approval. Copyright reserved.</small>	GREENHITHE BRIDGE WATERMAIN DUPLICATION AND CAUSEWAY GEOTECHNICAL DESIGN CAUSEWAY DESIGN SECTIONS A & C	CAD FILE	2010673.852-855	DATE	01.07.15
						DES. CHECKED	Y.T.	10.14				ORIGINAL SCALE A3	CONTRACT No.		
						DRAWN	G.W.	10.14				AS SHOWN	-		
3	01.07.15	ISSUED FOR CONSENT		A.T.S.	M.A.E.	DWG. CHECKED	N.H.	10.14				OPERATIONS			
2	09.03.15	ISSUED FOR CONSENT		H.L.A.	M.A.E.	PROJECT LEADER	M.A.E.	10.14							
1	13.02.15	ISSUED FOR CONSENT		P.K.	M.A.E.	INFRASTR'R APP'D		10.14	SIGNATORY 2						
ISSUE	DATE	AMENDMENT	BY	APPD.					INFRASTRUCTURE			DWG No.	2010673.852		3

Plot Date: Jul 09, 2015 - 2:43pm
\\Akl-fs\cad\Jobs\42073300\01_DWG_Current\08 AEE\ 2010673.852-855.dwg

SOUTH SIDE

NORTH SIDE



SECTION B/D
SCALE: 1:200

CAUSEWAY WIDENING FOR PIPELINES
TYPICAL CROSS SECTION VIEW TO WEST
AT SECTION B – PIPELINE DISTANCE 270m TO 371m (MOTORWAY CHANAGE 7700m–7800m)
AT SECTION D – PIPELINE DISTANCE 574m TO 838m (MOTORWAY CHAINAGE 7230m–7500m)

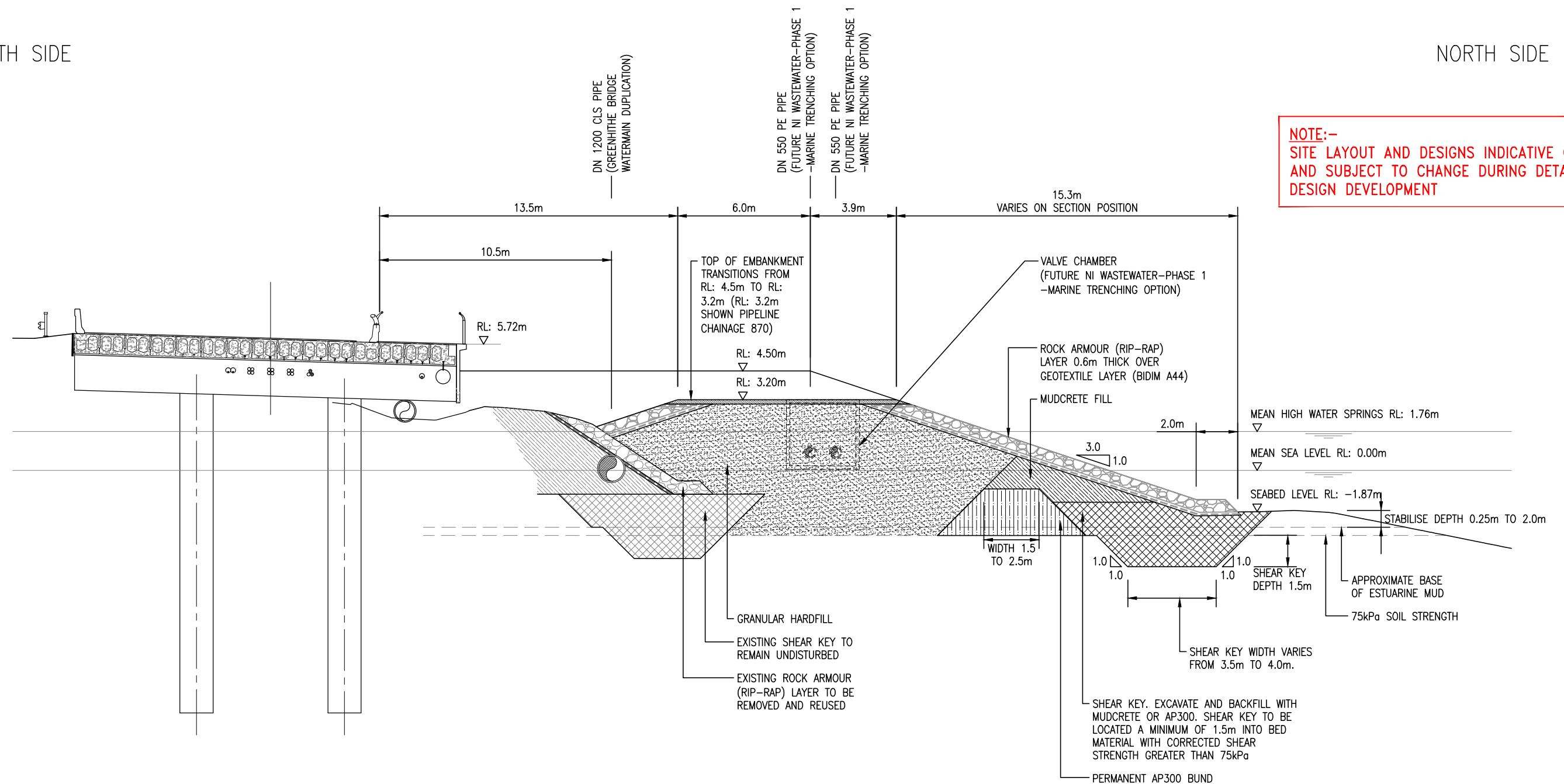
NOTE:
REFER TO DRAWING 2010673.850 TO 851 FOR DESIGN SECTION LOCATIONS.

FOR CONSENT

					DESIGNED	M.J.	10.14	SIGNATORY 1 OPERATIONS	 Watercare <small>COPYRIGHT - This drawing, the design concept, remain the exclusive property of Watercare Services Limited and may not be used without approval. Copyright reserved.</small>	GREENHITHE BRIDGE WATERMAIN DUPLICATION AND CAUSEWAY GEOTECHNICAL DESIGN CAUSEWAY DESIGN SECTIONS B & D	CAD FILE 2010673.852-855		DATE 01.07.15	
					DES. CHECKED	Y.T.	10.14				ORIGINAL SCALE A3 AS SHOWN		CONTRACT No. —	
					DRAWN	G.W.	10.14				REF No. —		ISSUE —	
3	01.07.15	ISSUED FOR CONSENT	A.T.S.	M.A.E.	DWG. CHECKED	N.H.	10.14	SIGNATORY 2 INFRASTRUCTURE			DWG No. 2010673.853		3	
2	09.03.15	ISSUED FOR CONSENT	H.L.A.	M.A.E.	PROJECT LEADER	M.A.E.	10.14							
1	13.02.15	ISSUED FOR CONSENT	P.K.	M.A.E.	INFRASTR APP'D									
ISSUE	DATE	AMENDMENT		BY	APPD.									

NORTH SIDE

NOTE:-
SITE LAYOUT AND DESIGNS INDICATIVE ONLY
AND SUBJECT TO CHANGE DURING DETAILED
DESIGN DEVELOPMENT



SECTION E
SCALE: 1:200

TYPICAL CROSS SECTION VIEW TO WEST (PIPELINE DISTANCE 870m SHOWN)
DESIGN SECTION E – PIPELINE DISTANCE 838m TO 870m (MOTORWAY CHAINAGE 7240m–7208m)

REFER TO DRAWING 2010673.850 TO 851 FOR DESIGN SECTION LOCATIONS.

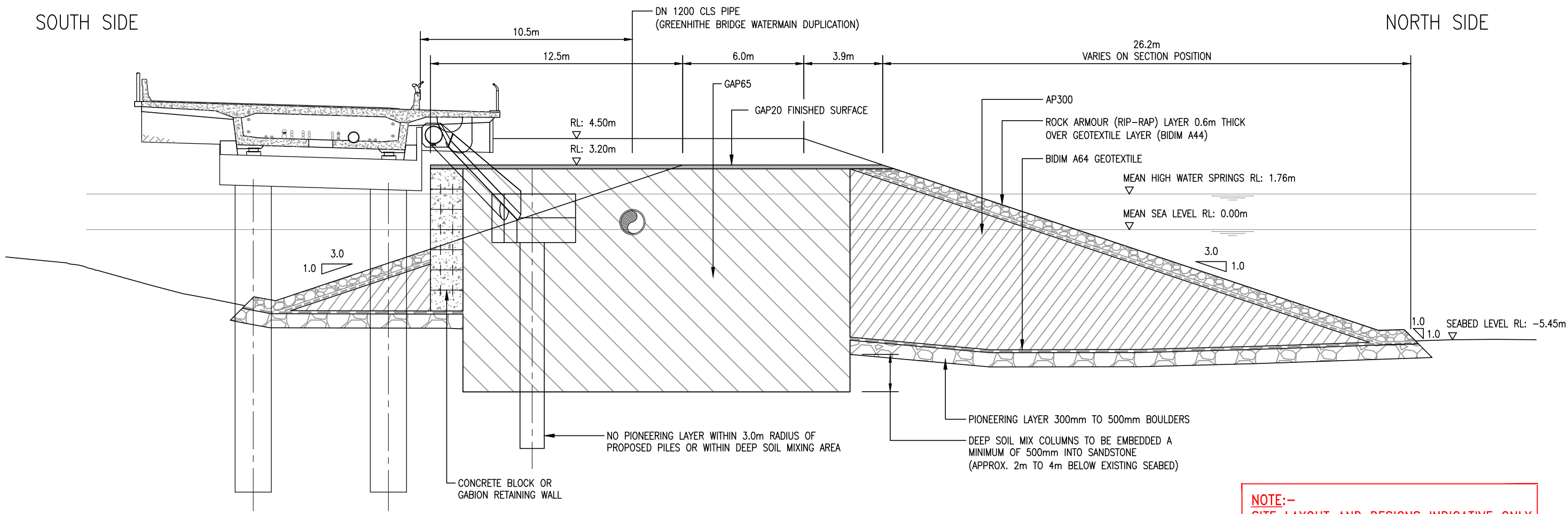
FOR CONSENT

						DESIGNED	M.J.	10.14	SIGNATORY 1	<div> Watercare <small>COPYRIGHT — This drawing, the design concept, remain the exclusive property of Watercare Services Limited and may not be used without approval. Copyright reserved.</small></div>	GREENHITHE BRIDGE WATERMAIN DUPLICATION AND CAUSEWAY GEOTECHNICAL DESIGN CAUSEWAY DESIGN SECTION E	CAD FILE 2010673.852-855 DATE 01.07.15			
					DES. CHECKED	Y.T.	10.14	OPERATIONS				ORIGINAL SCALE A3 AS SHOWN	CONTRACT No. —		
3	01.07.15	ISSUED FOR CONSENT		A.T.S.	M.A.E.	DRAWN	H.L.A.					10.14	SIGNATORY 2	REF No. —	ISSUE —
2	09.03.15	ISSUED FOR CONSENT		H.L.A.	M.A.E.	DWG. CHECKED	N.H.					10.14		DWG No. 2010673.854	3
1	13.02.15	ISSUED FOR CONSENT		P.K.	M.A.E.	PROJECT LEADER	M.A.E.	10.14							
ISSUE	DATE	AMENDMENT			BY	APPD.	INFRASTR APP'D		INFRASTRUCTURE						

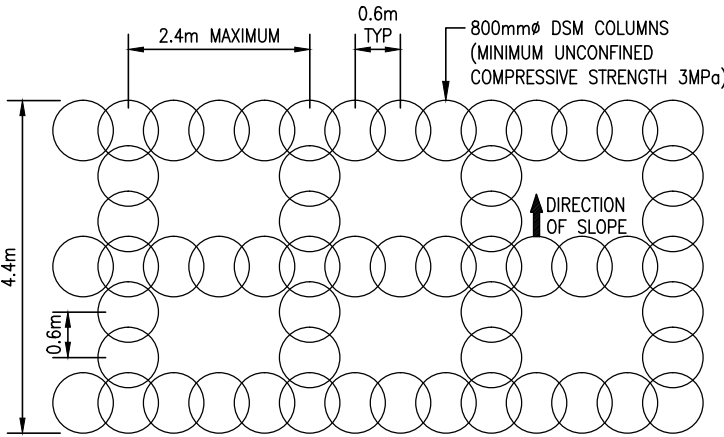
Plot Date: Jul 09, 2015 - 12:19pm \\Akl-fs\cad\Jobs\42073300\01_DWG_Current\08 AEE\ 2010673.852-855.dwg

SOUTH SIDE

NORTH SIDE



NOTE:-
SITE LAYOUT AND DESIGNS INDICATIVE ONLY
AND SUBJECT TO CHANGE DURING DETAILED
DESIGN DEVELOPMENT




DETAIL DEEP SOIL MIX COLUMNS GRID: 4.4m WIDE SHOWN
SCALE: 1:100

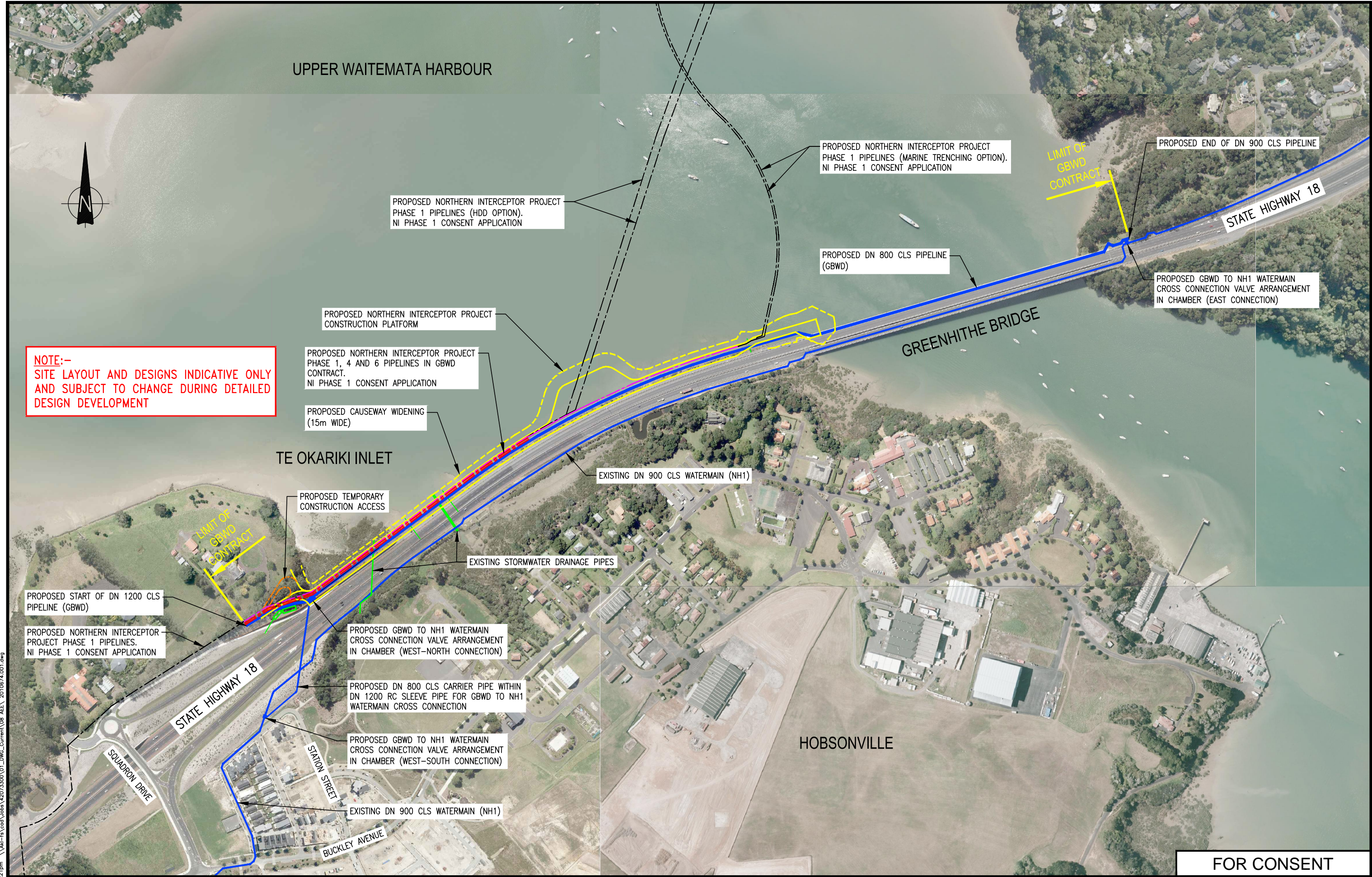
SECTION F
SCALE: 1:200

CAUSEWAY WIDENING FOR PIPELINES
TYPICAL CROSS SECTION VIEW TO WEST (PIPELINE DISTANCE 957m SHOWN)
DESIGN SECTION F – PIPELINE DISTANCE 870m TO 957m (MOTORWAY CHAINAGE 7208m–7124m)

NOTE:
REFER TO DRAWING 2010673.850 TO 851 FOR DESIGN SECTION LOCATIONS.

FOR CONSENT

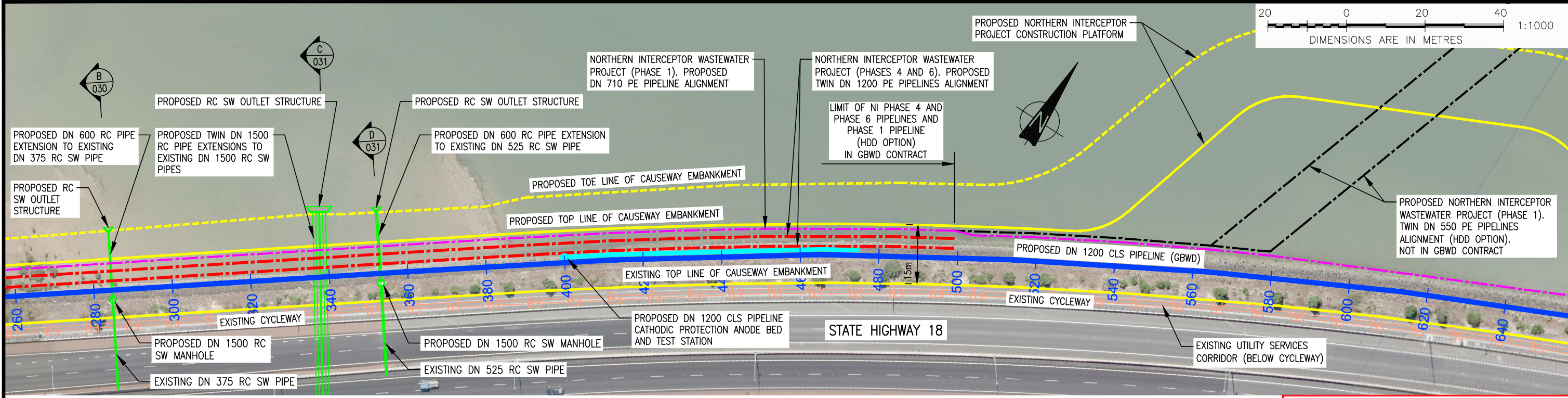
				DESIGNED	M.J.	10.14	SIGNATORY 1		GREENHITHE BRIDGE WATERMAIN DUPLICATION AND CAUSEWAY GEOTECHNICAL DESIGN	CAD FILE 2010673.852-855		DATE 01.07.15	
				DES. CHECKED	Y.T.	10.14				ORIGINAL SCALE A3 AS SHOWN		CONTRACT No.	
				DRAWN	H.L.A.	10.14				REF No.		ISSUE	
3	01.07.15	ISSUED FOR CONSENT	A.T.S.	M.A.E.	N.H.	10.14	SIGNATORY 2	COPYRIGHT - This drawing, the design concept, remain the exclusive property of Watercare Services Limited and may not be used without approval. Copyright reserved.	CAUSEWAY DESIGN SECTION F	-		-	
2	09.03.15	ISSUED OFR CONSENT	H.L.A.	M.A.E.	M.A.E.	10.14				-		-	
1	13.02.15	ISSUED FOR CONSENT	P.K.	M.A.E.	INFRAS'T'R APP'D					-		-	
ISSUE	DATE	AMENDMENT	BY	APPD.			INFRASTRUCTURE			DWG No.	2010673.855		3



FOR CONSENT

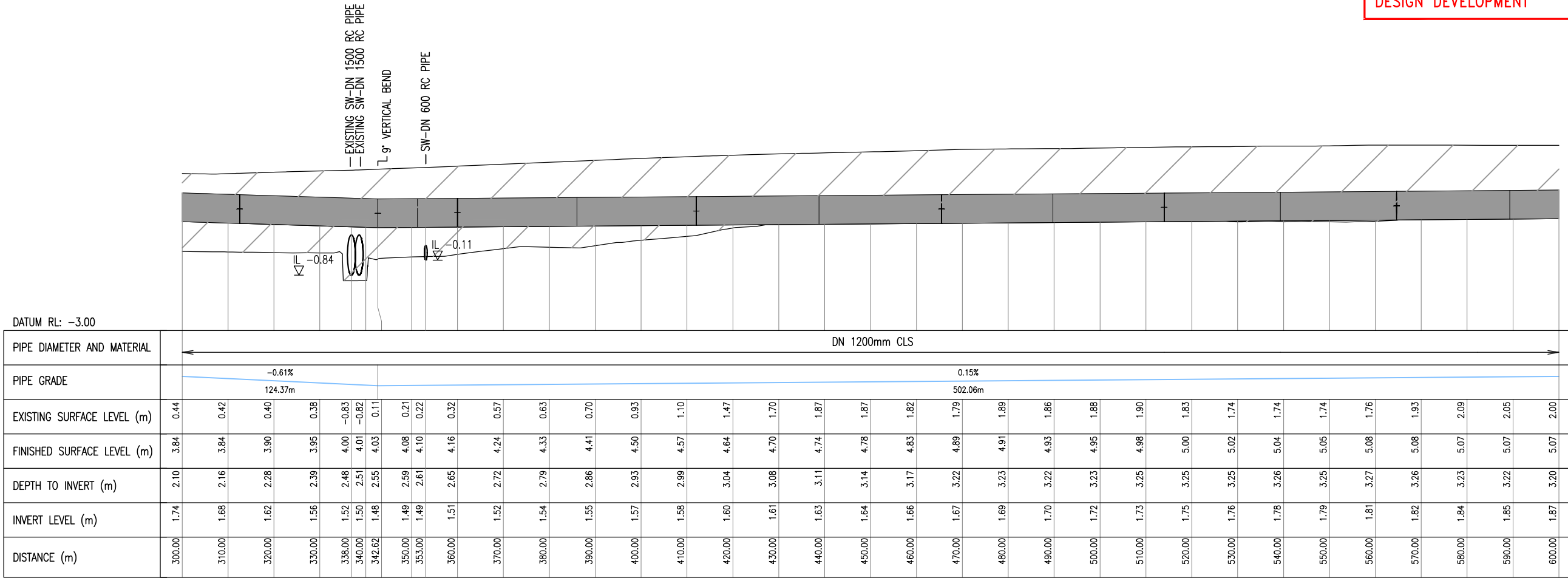
						DESIGNED	N.H.	10.14	OPERATIONS	 Watercare COPYRIGHT - This drawing, the design concept, remain the exclusive property of Watercare Services Limited and may not be used without approval. Copyright reserved.	GREENHITHE BRIDGE WATERMAIN DUPLICATION AND CAUSEWAY CIVIL DESIGN LOCATION PLAN	CAD FILE 2010674.001		DATE 01.07.15	
						DES. CHECKED	A.H.	10.14				ORIGINAL SCALE A3 1:5,000		CONTRACT No. —	
3	01.07.15	ISSUED FOR CONSENT		A.T.S.	M.A.E.	DRAWN	H.L.A.	10.14				REF No. —		ISSUE —	
2	09.03.15	ISSUED FOR CONSENT		H.L.A.	M.A.E.	DWG. CHECKED	A.H.	10.14	INFRASTRUCTURE			DWG No. 2010674.001		3	
1	13.02.15	ISSUED FOR CONSENT		P.K.	M.A.E.	PROJECT LEADER	M.A.E.	10.14				DWG No.			
						INFRASTR APP'D									
ISSUE	DATE	AMENDMENT			BY	APPD.									

Plot Date: Jul 09, 2015 - 12:21pm \\ak-rs\cad\Jobs\2010674\01_DWG_Current\08_AE\ 2010674.001.dwg



PLAN: GBWD PIPELINE DISTANCE 300.00 – 600.00m

NOTE:-
SITE LAYOUT AND DESIGNS INDICATIVE ONLY
AND SUBJECT TO CHANGE DURING DETAILED
DESIGN DEVELOPMENT



LONGITUDINAL SECTION: GBWD PIPELINE DISTANCE 300.00 – 600.00m

SCALES: HORIZ 1:1000, VERT 1:200

FOR CONSENT

DESIGNED		N.H.		10.14	
DES. CHECKED		A.T.S.		10.14	
DRAWN		M.N.V.		10.14	
DWG. CHECKED		A.T.S.		10.14	
PROJECT LEADER		M.A.E.		10.14	
INFRASTR APP'D					
BY		APPD.			

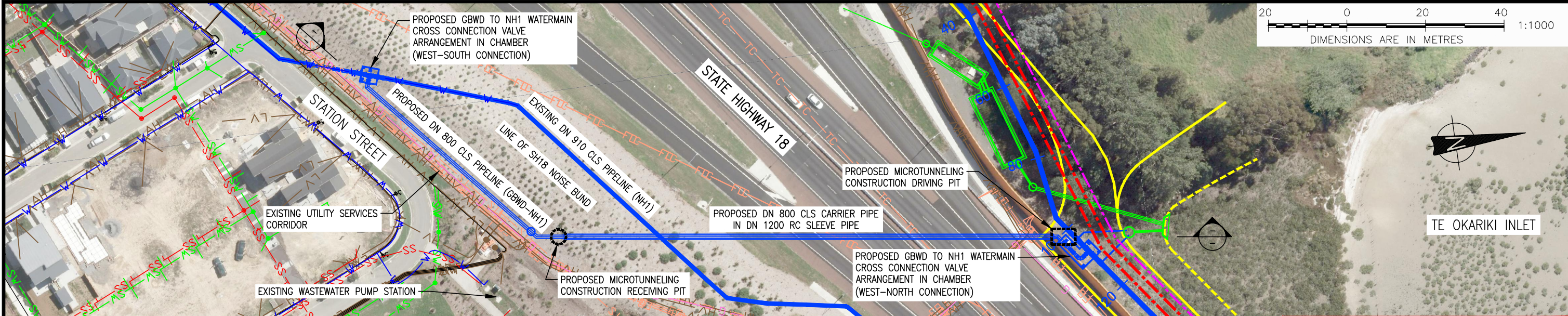
3	17.07.15	ISSUED FOR CONSENT	A.T.S.	M.A.E.	
2	09.03.15	ISSUED FOR CONSENT	H.L.A.	M.A.E.	
1	13.02.15	ISSUED FOR CONSENT	P.K.	M.A.E.	
ISSUE	DATE	AMENDMENT	BY	APPD.	

COPYRIGHT - This drawing, the design concept, remain the exclusive property of Watercare Services Limited and may not be used without approval. Copyright reserved.

GREENHITHE BRIDGE WATERMAIN DUPLICATION AND CAUSEWAY CIVIL DESIGN

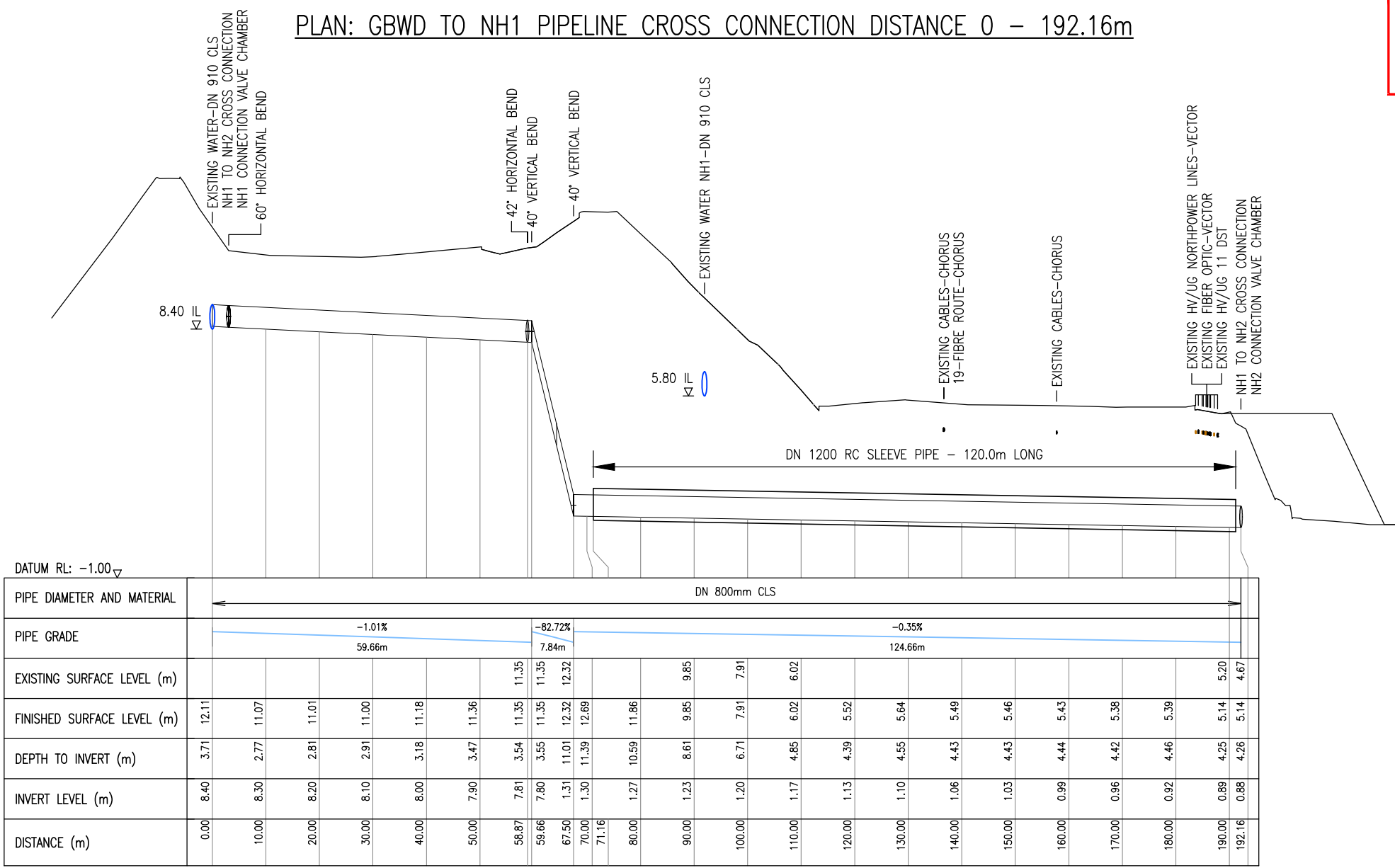
WATERMAIN LAYOUT PLAN AND LONGITUDINAL SECTION – SHEET 2 OF 3

CAD FILE	2010674.002-005	DATE	17.07.15
ORIGINAL SCALE	A3	CONTRACT No.	-
1:1,000			
REF No.	-	ISSUE	-
DWG No.	2010674.003		3



PLAN: GBWD TO NH1 PIPELINE CROSS CONNECTION DISTANCE 0 – 192.16m

NOTE:-
SITE LAYOUT AND DESIGNS INDICATIVE ONLY
AND SUBJECT TO CHANGE DURING DETAILED
DESIGN DEVELOPMENT

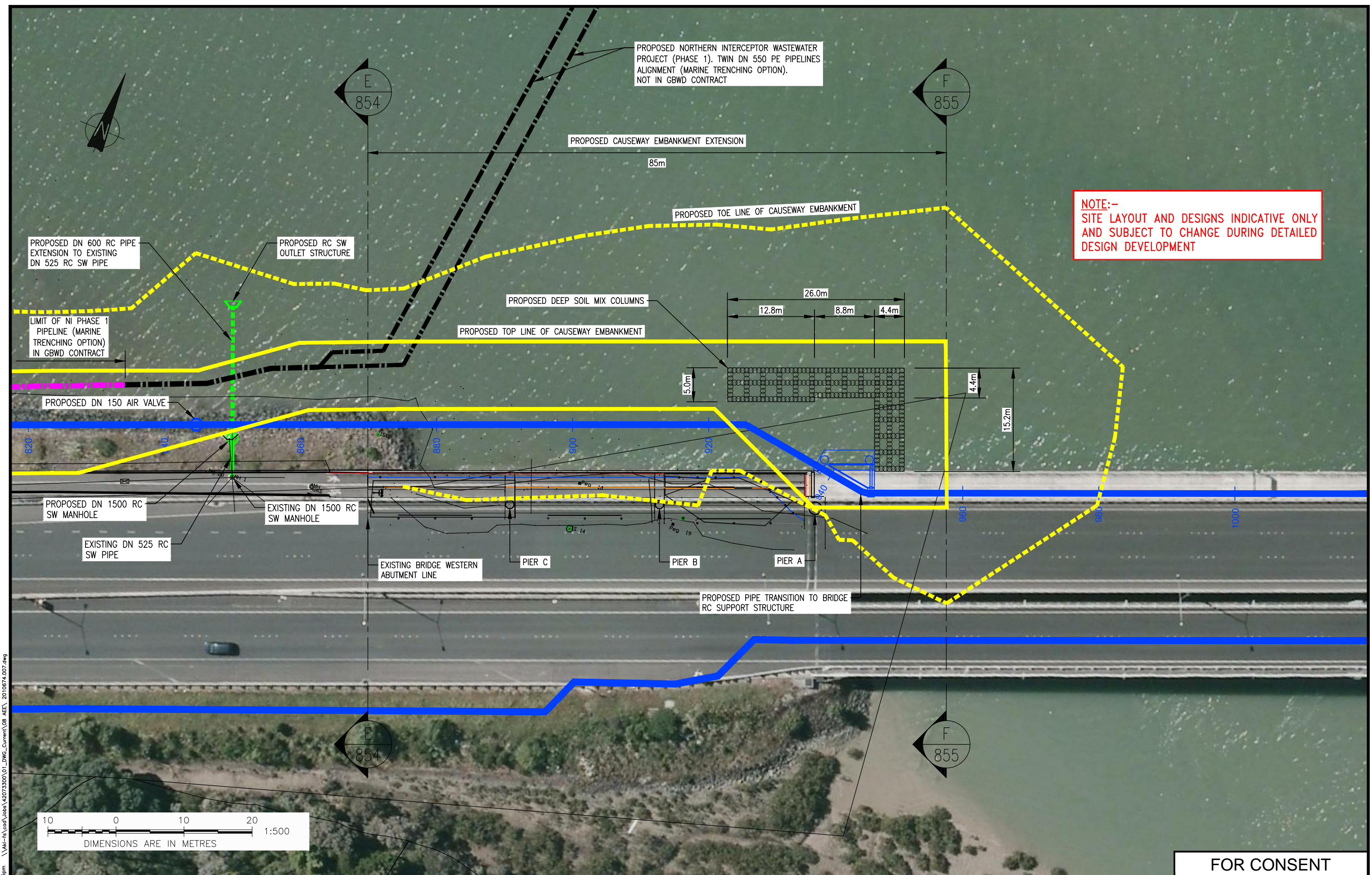


LONGITUDINAL SECTION: GBWD TO NH1 PIPELINE CROSS CONNECTION DISTANCE 0 – 192.16m

SCALES: HORIZ 1:1000, VERT 1:200

FOR CONSENT

					DESIGNED	N.H.	10.14	OPERATIONS	 Watercare <small>COPYRIGHT – This drawing, the design concept, remain the exclusive property of Watercare Services Limited and may not be used without approval. Copyright reserved.</small>	GREENHITHE BRIDGE WATERMAIN DUPLICATION AND CAUSEWAY CIVIL DESIGN NH1 TO NH2 PIPELINE CROSS CONNECTION (WEST) – LAYOUT PLAN AND LONGITUDINAL SECTION	CAD FILE 2010674.002-005		DATE 01.07.15		
					DES. CHECKED	A.H.	10.14				ORIGINAL SCALE A3		CONTRACT No.		
					DRAWN	H.L.A.	10.14				1:1,000		-		
3	01.07.15	ISSUED FOR CONSENT	A.T.S.	M.A.E.	DWG. CHECKED	A.H.	10.14	INFRASTRUCTURE			REF No.		ISSUE		
2	09.03.15	ISSUED FOR CONSENT	H.L.A.	M.A.E.	PROJECT LEADER	M.A.E.	10.14				-		-		
1	13.02.15	ISSUED FOR CONSENT	P.K.	M.A.E.	INFRAS'TR APP'D						DWG No.		2010674.005		
ISSUE	DATE	AMENDMENT	BY	APPD.											



Plot Date: Jul 09, 2015 - 2:15pm \\uk-rs\cad\Jobs\2010674\01_DWG_Current\08_AEE\ 2010674.007.dwg

ISSUE	DATE	AMENDMENT	BY	APPD.
3	01.07.15	ISSUED FOR CONSENT	A.T.S.	M.A.E.
2	09.03.15	ISSUED FOR CONSENT	H.L.A.	M.A.E.
1	13.02.15	ISSUED FOR CONSENT	P.K.	M.A.E.

DESIGNED	N.H.	10.14
DES. CHECKED	A.T.S.	10.14
DRAWN	H.L.A.	10.14
DWG. CHECKED	A.T.S.	10.14
PROJECT LEADER	M.A.E.	10.14
INFRASTR'R APP'D		



Watercare

COPYRIGHT - This drawing, the design concept, remain the exclusive property of Watercare Services Limited and may not be used without approval. Copyright reserved.

OPERATIONS

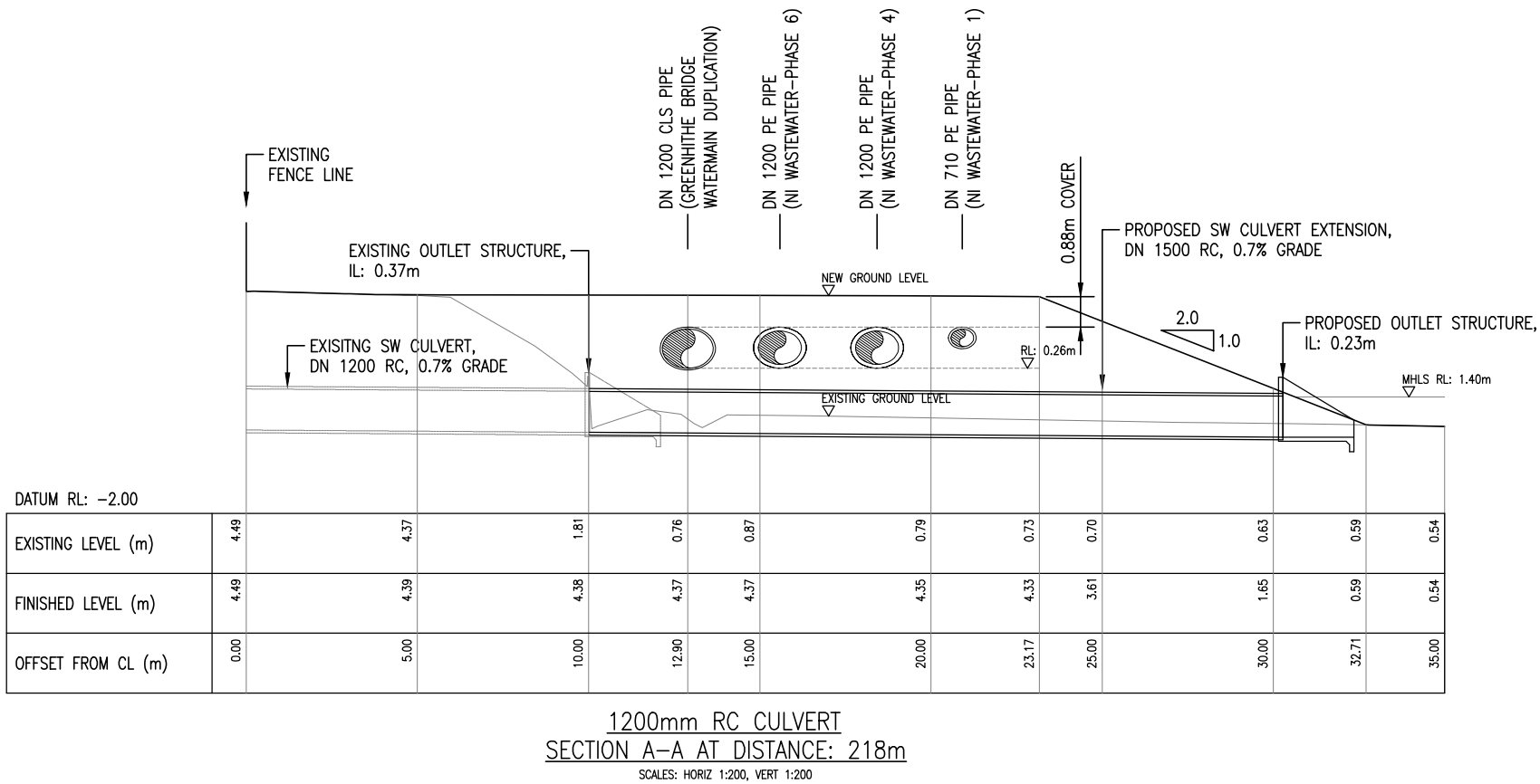
INFRASTRUCTURE

GREENHITHE BRIDGE WATERMAIN DUPLICATION AND CAUSEWAY CIVIL DESIGN

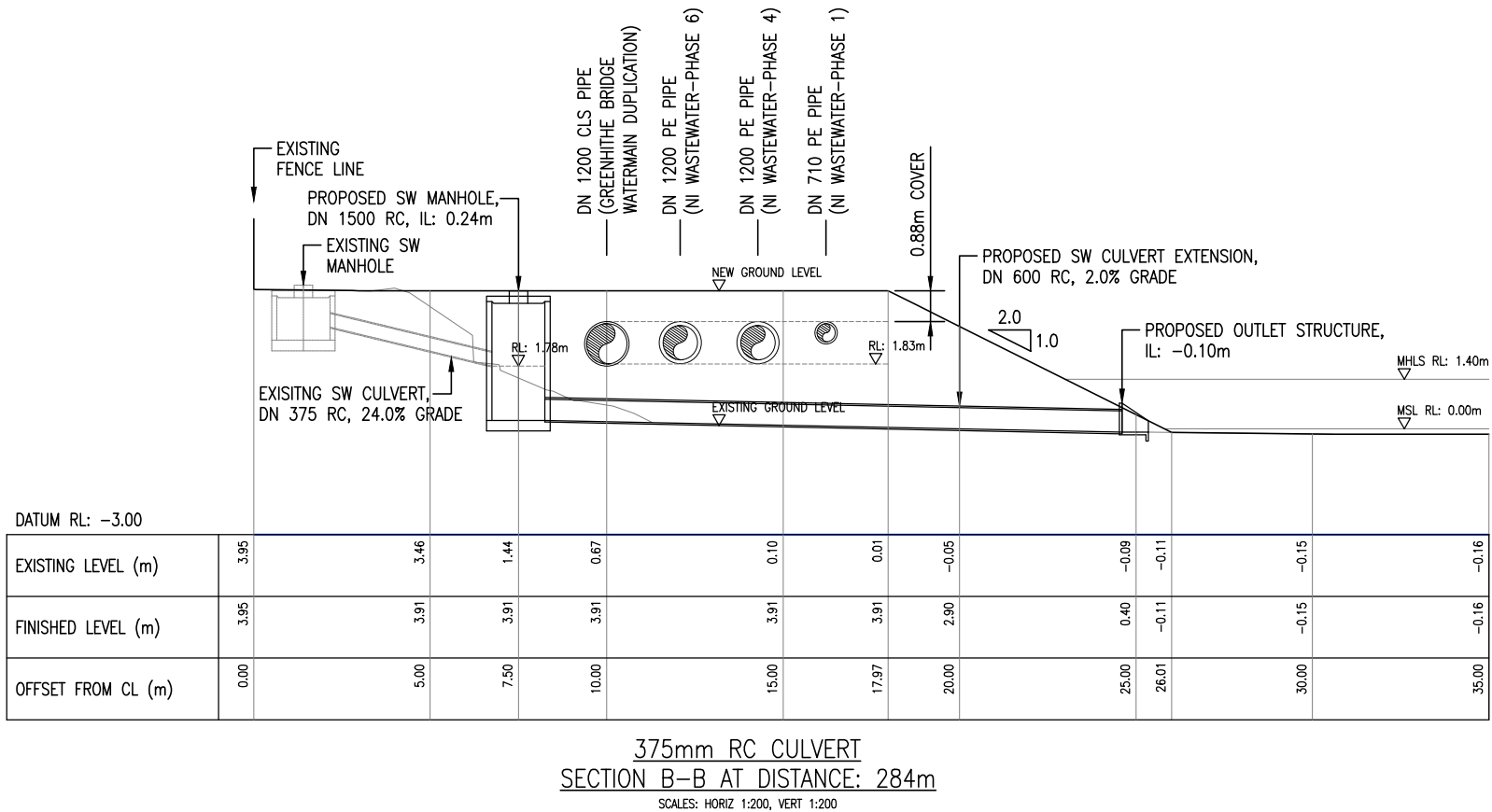
PIPELINE AND TRANSITION STRUCTURE AT WESTERN ABUTMENT - LAYOUT PLAN

CAD FILE	2010674.007	DATE	01.07.15
ORIGINAL SCALE	A3 1:500	CONTRACT No.	-
REF No.	-	ISSUE	-
DWG No.	2010674.007		3

Plot Date: Jul 09, 2015 - 2:19pm \\Mtl-rs\cad\Jobs\42073300\01_DWG_Current\08_AEE\ 2010674.030-032.dwg



NOTE:-
SITE LAYOUT AND DESIGNS INDICATIVE ONLY
AND SUBJECT TO CHANGE DURING DETAILED
DESIGN DEVELOPMENT



FOR CONSENT

ISSUE	DATE	AMENDMENT	BY	APPD.
3	01.07.15	ISSUED FOR CONSENT	A.T.S.	M.A.E.
2	09.03.15	ISSUED FOR CONSENT	H.L.A.	M.A.E.
1	13.02.15	ISSUED FOR CONSENT	P.K.	M.A.E.

DESIGNED	H.L.A.	10.14
DES. CHECKED	A.H.	10.14
DRAWN	H.L.A.	10.14
DWG. CHECKED	A.H.	10.14
PROJECT LEADER	M.A.E.	10.14
INFRASTR APP'D		

SIGNATORY 1

OPERATIONS

SIGNATORY 2

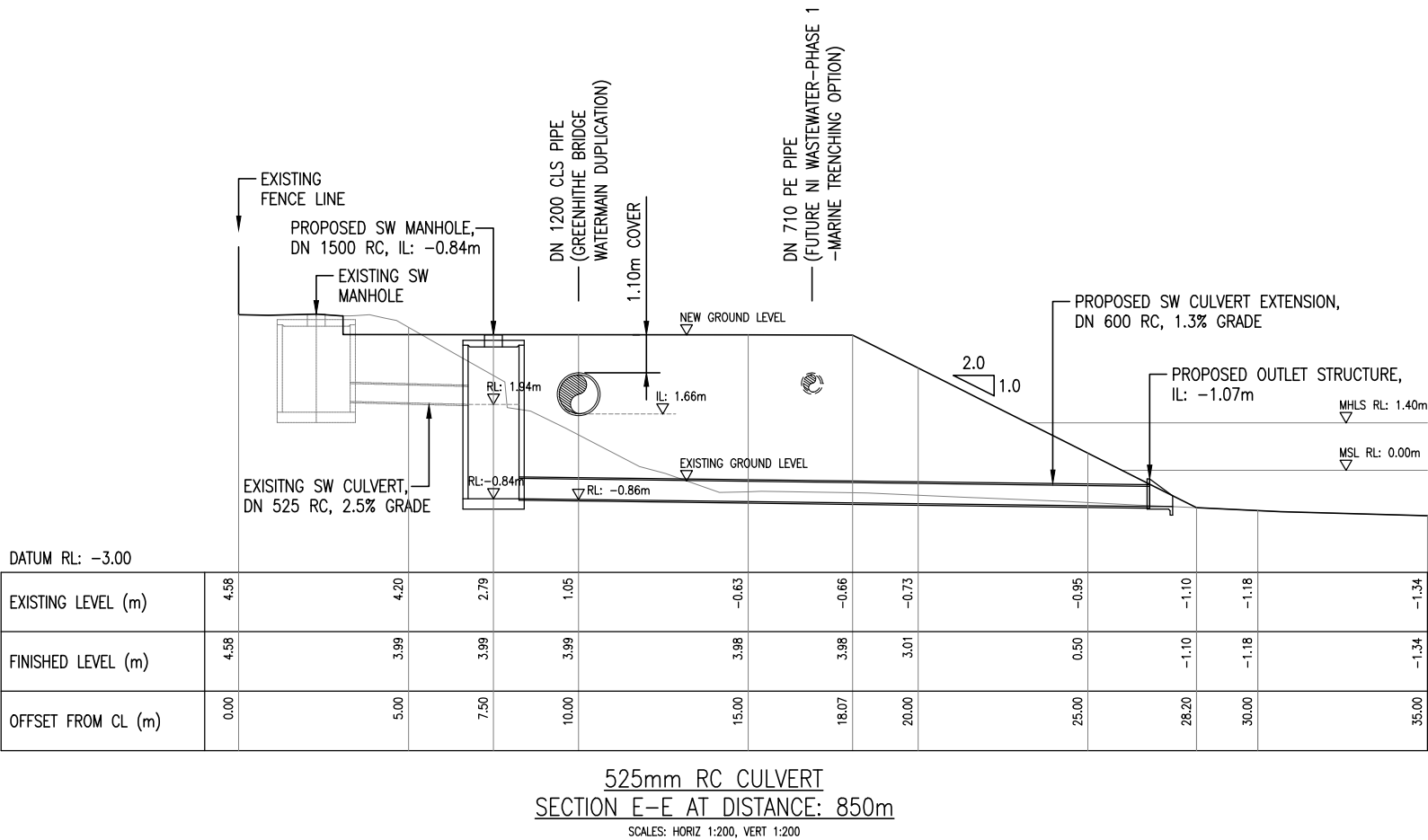
INFRASTRUCTURE



GREENHITHE BRIDGE WATERMAIN DUPLICATION AND CAUSEWAY
CIVIL DESIGN
STORMWATER CULVERT EXTENSIONS - SECTIONS A-A AND B-B

CAD FILE	2010674.030-032	DATE	01.07.15
ORIGINAL SCALE	A3 AS SHOWN	CONTRACT No.	-
REF No.	-	ISSUE	-
DWG No.	2010674.030		3

Plot Date: Jul 09, 2015 - 2:24pm \\Adi-rs\cad\Jobs\4207330\01_DWG_Current\08_AEE\ 2010674.030-032.dwg



NOTE:-
SITE LAYOUT AND DESIGNS INDICATIVE ONLY
AND SUBJECT TO CHANGE DURING DETAILED
DESIGN DEVELOPMENT

FOR CONSENT

ISSUE	DATE	AMENDMENT	BY	APPD.
3	01.07.15	ISSUED FOR CONSENT	A.T.S.	M.A.E.
2	09.03.15	ISSUED FOR CONSENT	H.L.A.	M.A.E.
1	13.02.15	ISSUED FOR CONSENT	P.K.	M.A.E.

SIGNATORY 1	OPERATIONS
SIGNATORY 2	INFRASTRUCTURE

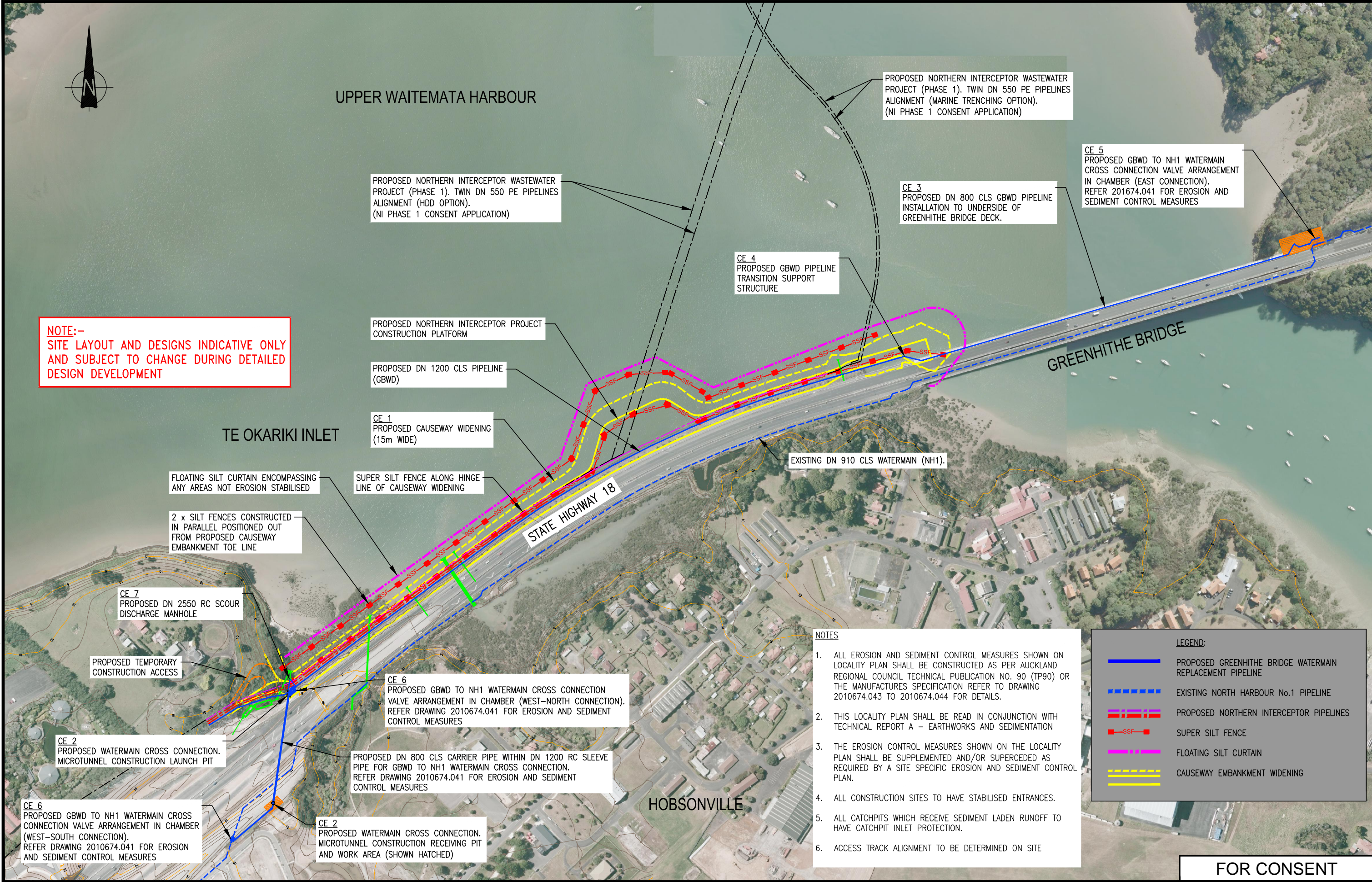


Watercare

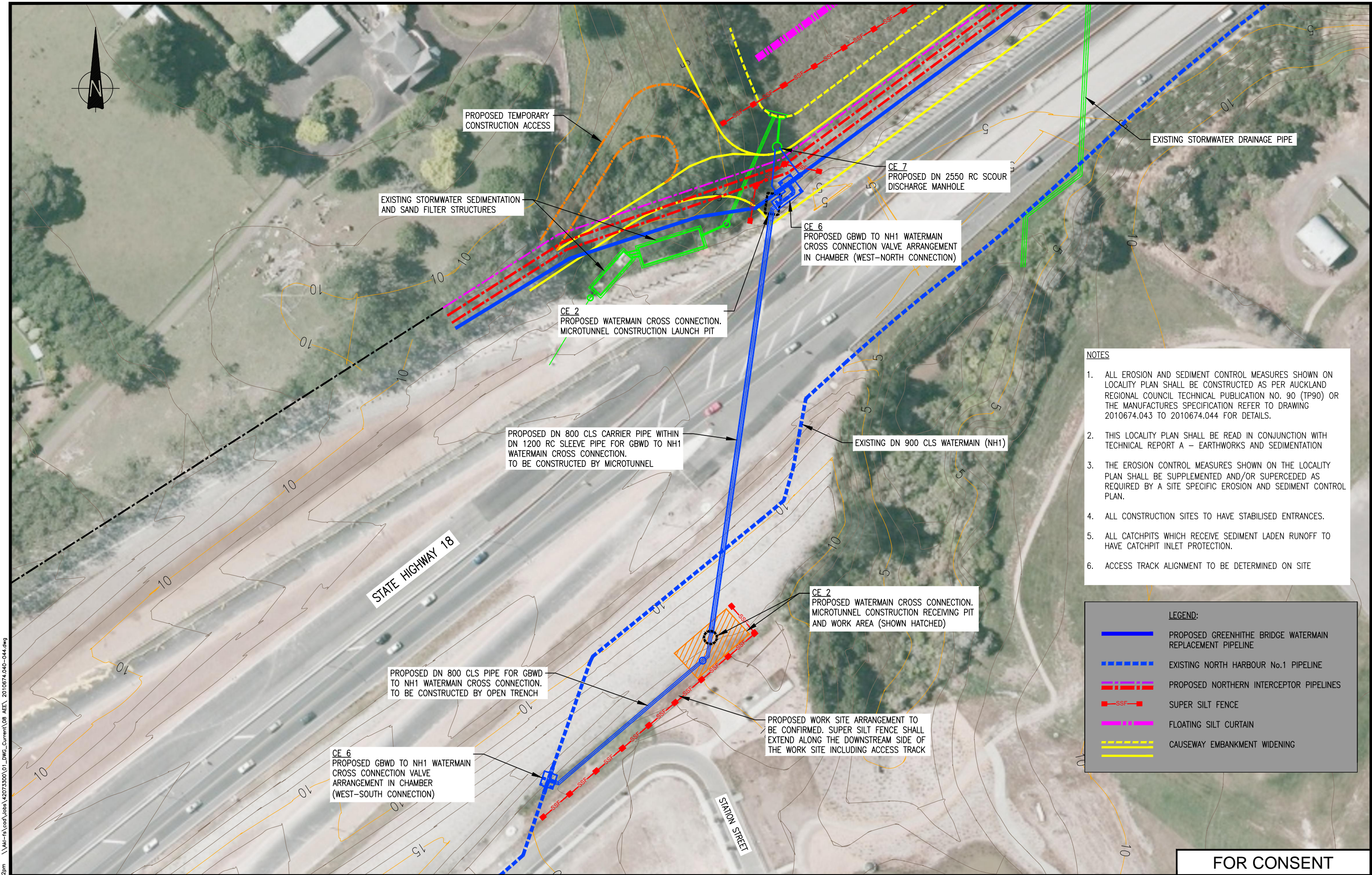
COPYRIGHT - This drawing, the design concept, remain the exclusive property of Watercare Services Limited and may not be used without approval. Copyright reserved.

GREENHITHE BRIDGE WATERMAIN DUPLICATION AND CAUSEWAY
CIVIL DESIGN
STORMWATER CULVERT EXTENSIONS - SECTION E-E

CAD FILE	2010674.030-032	DATE	01.07.15
ORIGINAL SCALE	A3 AS SHOWN	CONTRACT No.	-
REF No.	-	ISSUE	-
DWG No.	2010674.032		3



					DESIGNED	P.K.	19.12.14	OPERATIONS	 Watercare <small>COPYRIGHT - This drawing, the design concept, remain the exclusive property of Watercare Services Limited and may not be used without approval. Copyright reserved.</small>	GREENHITHE BRIDGE WATERMAIN DUPLICATION EROSION AND SEDIMENT CONTROL ARRANGEMENT EROSION AND SEDIMENT CONTROL LOCATION PLAN	CAD FILE 2010674.040-044		DATE 01.07.15	
					DES. CHECKED	D.P.	19.12.14				ORIGINAL SCALE A3		CONTRACT No.	
					DRAWN	P.K.	19.12.14				1:8,000		-	
3	01.07.15	ISSUED FOR CONSENT	A.T.S.	J.B.	DWG. CHECKED	D.P.	19.12.14	REF No.			ISSUE			
2	03.03.15	ISSUED FOR CONSENT	P.K.	J.B.	PROJECT LEADER	J.B.	19.12.14	-			-			
1	19.12.14	ISSUED FOR CONSENT	P.K.	J.B.	INFRASTR APP'D			INFRASTRUCTURE	DWG No.	2010674.040	3			
ISSUE	DATE	AMENDMENT		BY	APPD.									



- NOTES**
1. ALL EROSION AND SEDIMENT CONTROL MEASURES SHOWN ON LOCALITY PLAN SHALL BE CONSTRUCTED AS PER AUCKLAND REGIONAL COUNCIL TECHNICAL PUBLICATION NO. 90 (TP90) OR THE MANUFACTURES SPECIFICATION REFER TO DRAWING 2010674.043 TO 2010674.044 FOR DETAILS.
 2. THIS LOCALITY PLAN SHALL BE READ IN CONJUNCTION WITH TECHNICAL REPORT A – EARTHWORKS AND SEDIMENTATION
 3. THE EROSION CONTROL MEASURES SHOWN ON THE LOCALITY PLAN SHALL BE SUPPLEMENTED AND/OR SUPERCEDED AS REQUIRED BY A SITE SPECIFIC EROSION AND SEDIMENT CONTROL PLAN.
 4. ALL CONSTRUCTION SITES TO HAVE STABILISED ENTRANCES.
 5. ALL CATCHPITS WHICH RECEIVE SEDIMENT LADEN RUNOFF TO HAVE CATCHPIT INLET PROTECTION.
 6. ACCESS TRACK ALIGNMENT TO BE DETERMINED ON SITE

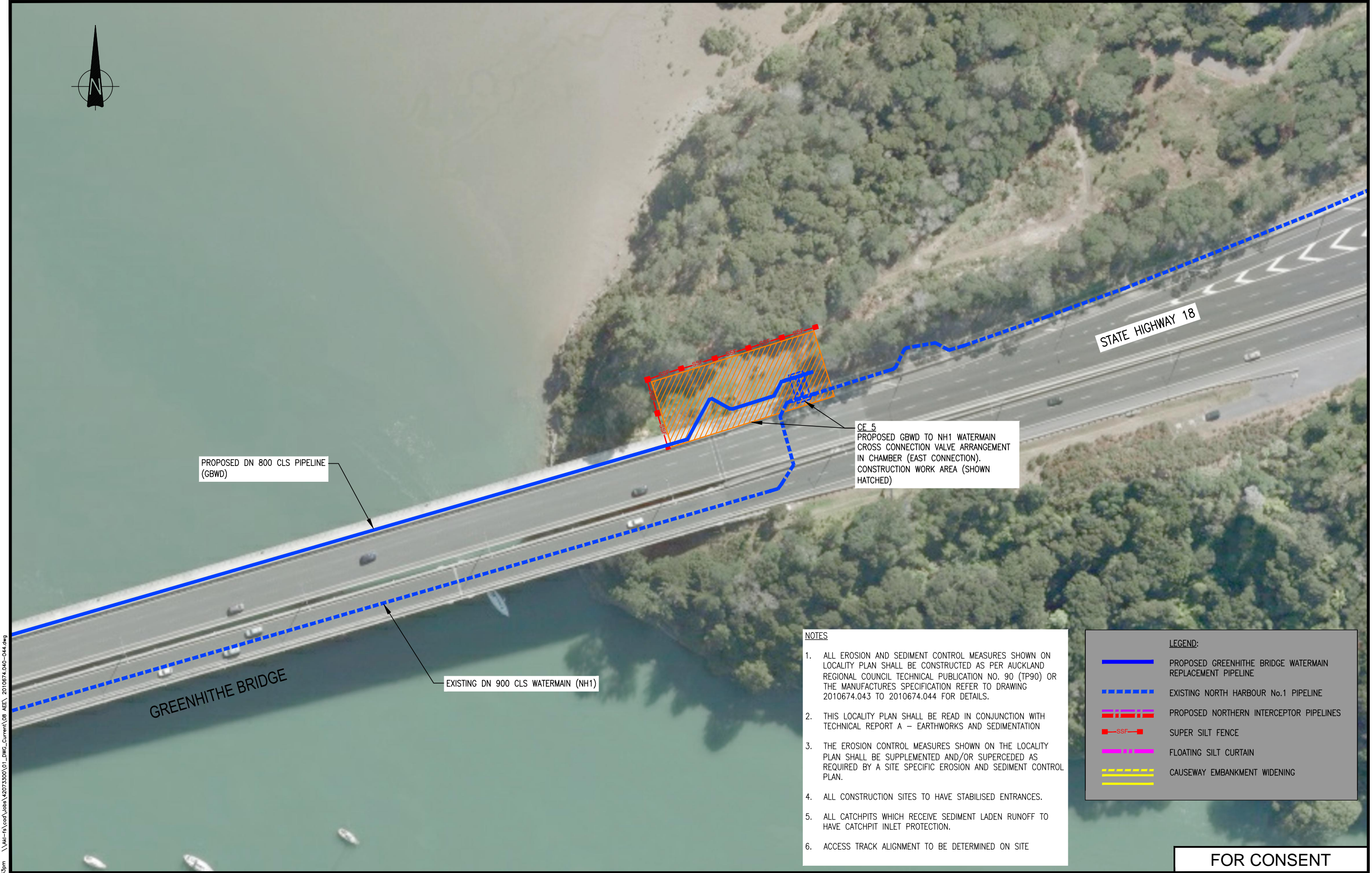
LEGEND:

- PROPOSED GREENHITHE BRIDGE WATERMAIN REPLACEMENT PIPELINE
- EXISTING NORTH HARBOUR No.1 PIPELINE
- PROPOSED NORTHERN INTERCEPTOR PIPELINES
- SUPER SILT FENCE
- FLOATING SILT CURTAIN
- CAUSEWAY EMBANKMENT WIDENING

FOR CONSENT

Plot Date: Jul 09, 2015 - 2:32pm \\ak-rs\cad\Nobs\2073300\01_DWG_Current\08_AEE\ 2010674.040-044.dwg

			DESIGNED			P.K.	19.12.14	OPERATIONS	 COPYRIGHT - This drawing, the design concept, remain the exclusive property of Watercare Services Limited and may not be used without approval. Copyright reserved.	GREENHITHE BRIDGE WATERMAIN DUPLICATION EROSION AND SEDIMENT CONTROL ARRANGEMENT WA 1, 2 & 3 EROSION AND SEDIMENT CONTROL LOCATION PLAN	CAD FILE 2010674.040-044		DATE 01.07.15	
			DES. CHECKED			D.P.	19.12.14				ORIGINAL SCALE A3 1:2,000		CONTRACT No.	
			DRAWN			P.K.	19.12.14				REF No.		ISSUE	
3	01.07.15	ISSUED FOR CONSENT	A.T.S.	J.B.							-		-	
2	23.03.15	ISSUED FOR CONSENT	P.K.	J.B.							-		-	
1	19.12.14	ISSUED FOR CONSENT	P.K.	J.B.							-		-	
ISSUE	DATE	AMENDMENT	BY	APPD.				INFRASTRUCTURE			DWG No. 2010674.041		3	



PROPOSED DN 800 CLS PIPELINE
(GBWD)

EXISTING DN 900 CLS WATERMAIN (NH1)

CE 5
PROPOSED GBWD TO NH1 WATERMAIN
CROSS CONNECTION VALVE ARRANGEMENT
IN CHAMBER (EAST CONNECTION).
CONSTRUCTION WORK AREA (SHOWN
HATCHED)

- NOTES
1. ALL EROSION AND SEDIMENT CONTROL MEASURES SHOWN ON LOCALITY PLAN SHALL BE CONSTRUCTED AS PER AUCKLAND REGIONAL COUNCIL TECHNICAL PUBLICATION NO. 90 (TP90) OR THE MANUFACTURES SPECIFICATION REFER TO DRAWING 2010674.043 TO 2010674.044 FOR DETAILS.
 2. THIS LOCALITY PLAN SHALL BE READ IN CONJUNCTION WITH TECHNICAL REPORT A – EARTHWORKS AND SEDIMENTATION
 3. THE EROSION CONTROL MEASURES SHOWN ON THE LOCALITY PLAN SHALL BE SUPPLEMENTED AND/OR SUPERCEDED AS REQUIRED BY A SITE SPECIFIC EROSION AND SEDIMENT CONTROL PLAN.
 4. ALL CONSTRUCTION SITES TO HAVE STABILISED ENTRANCES.
 5. ALL CATCHPITS WHICH RECEIVE SEDIMENT LADEN RUNOFF TO HAVE CATCHPIT INLET PROTECTION.
 6. ACCESS TRACK ALIGNMENT TO BE DETERMINED ON SITE

LEGEND:	
	PROPOSED GREENHITHE BRIDGE WATERMAIN REPLACEMENT PIPELINE
	EXISTING NORTH HARBOUR No.1 PIPELINE
	PROPOSED NORTHERN INTERCEPTOR PIPELINES
	SUPER SILT FENCE
	FLOATING SILT CURTAIN
	CAUSEWAY EMBANKMENT WIDENING

FOR CONSENT

Plot Date: Jul 09, 2015 - 2:33pm \\uk-rs\cad\subs\2073300\01_DWG_Current\08_AEE\ 2010674.040-044.dwg

ISSUE	DATE	AMENDMENT	BY	APPD.	DESIGNED	P.K.	19.12.14
					DES. CHECKED	D.P.	19.12.14
					DRAWN	P.K.	19.12.14
3	01.07.15	ISSUED FOR CONSENT	A.T.S.	J.B.	DWG. CHECKED	D.P.	19.12.14
2	23.03.15	ISSUED FOR CONSENT	P.K.	J.B.	PROJECT LEADER	J.B.	19.12.14
1	19.12.14	ISSUED FOR CONSENT	P.K.	J.B.	INFRASTR'R APP'D		

OPERATIONS
INFRASTRUCTURE

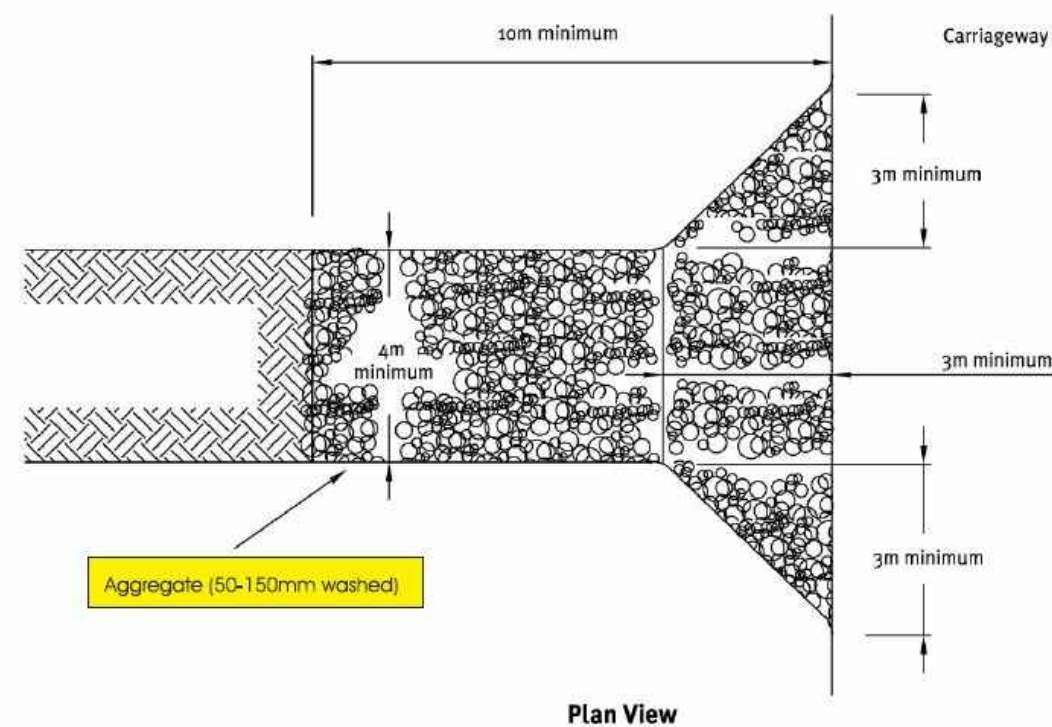
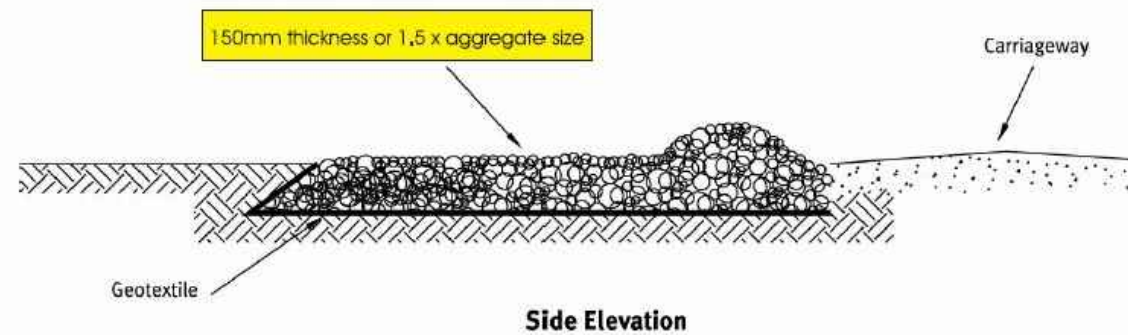


Watercare

COPYRIGHT - This drawing, the design concept, remain the exclusive property of Watercare Services Limited and may not be used without approval. Copyright reserved.

GREENHITHE BRIDGE WATERMAIN DUPLICATION
EROSION AND SEDIMENT CONTROL ARRANGEMENT
WA 7 EROSION AND SEDIMENT CONTROL LOCATION PLAN

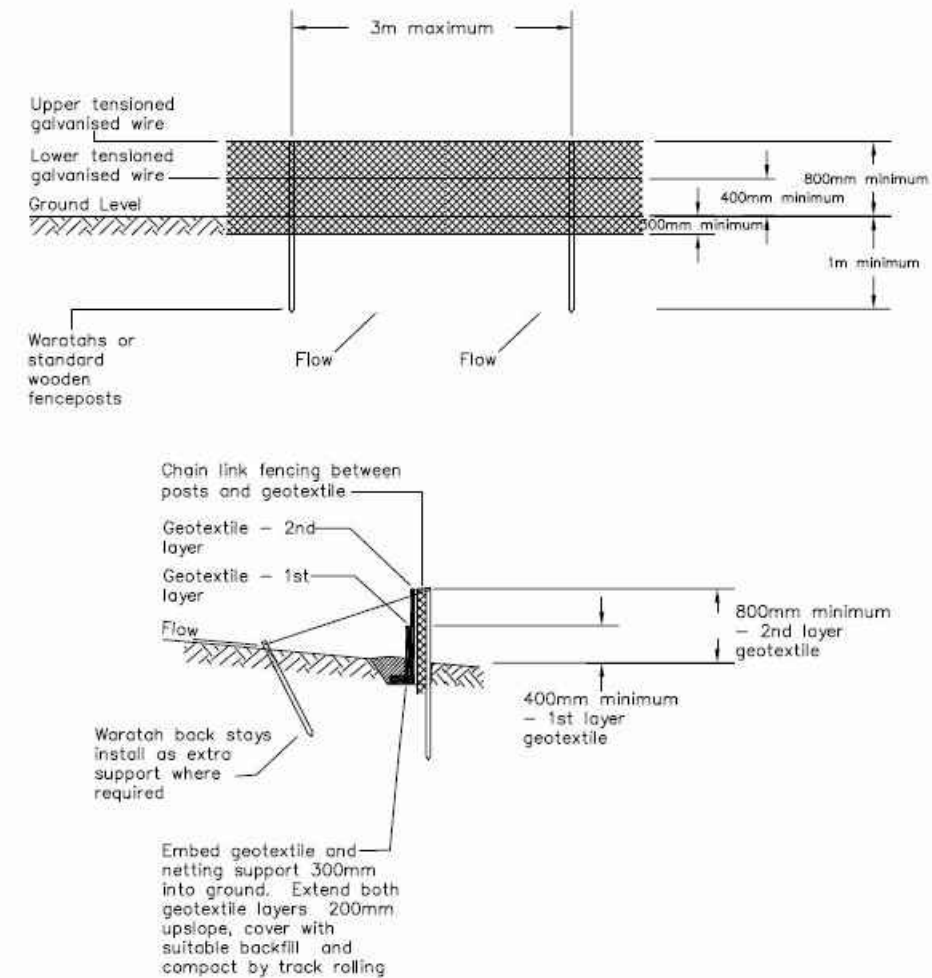
CAD FILE	2010674.040-044	DATE	01.07.15
ORIGINAL SCALE	A3	CONTRACT No.	-
1:2,000			
REF No.	-	ISSUE	-
DWG No.	2010674.042		3



STABILISED ENTRANCE
SCALE: N.T.S

Aggregate Range	50 – 150mm washed aggregate
Thickness	150mm minimum or 1.5 x aggregate size
Length	10m minimum length recommended
Width	4m minimum

STABILISED ENTRANCE DETAIL
SCALE: N.T.S



SUPER SILT FENCE ARRANGEMENT
SCALE: N.T.S

Slope %	Slope Length (m) (maximum)	Super Silt Fence Length (m) (maximum)	Spacing of Returns (m)
0-10	Unlimited	Unlimited	60
10-20	60	450	50
20-33	30	300	40
33-50	30	150	30
>50	15	75	20

SUPER SILT FENCE DESIGN CRITERIA

FOR CONSENT

Plot Date: Jul 09, 2015 - 2:33pm

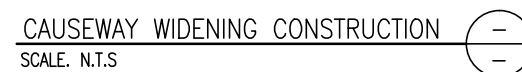
DESIGNED	P.K.	19.12.14			
DES. CHECKED	D.P.	19.12.14			
DRAWN	P.K.	19.12.14			
DWG. CHECKED	D.P.	19.12.14			
PROJECT LEADER	J.B.	19.12.14			
INFRASTR. APP'D					
ISSUE	DATE	AMENDMENT	BY	APPD.	
2	01.07.15	ISSUED FOR CONSENT	A.T.S.	J.B.	
1	19.12.14	ISSUED FOR CONSENT	PK	JB	

OPERATIONS
INFRASTRUCTURE



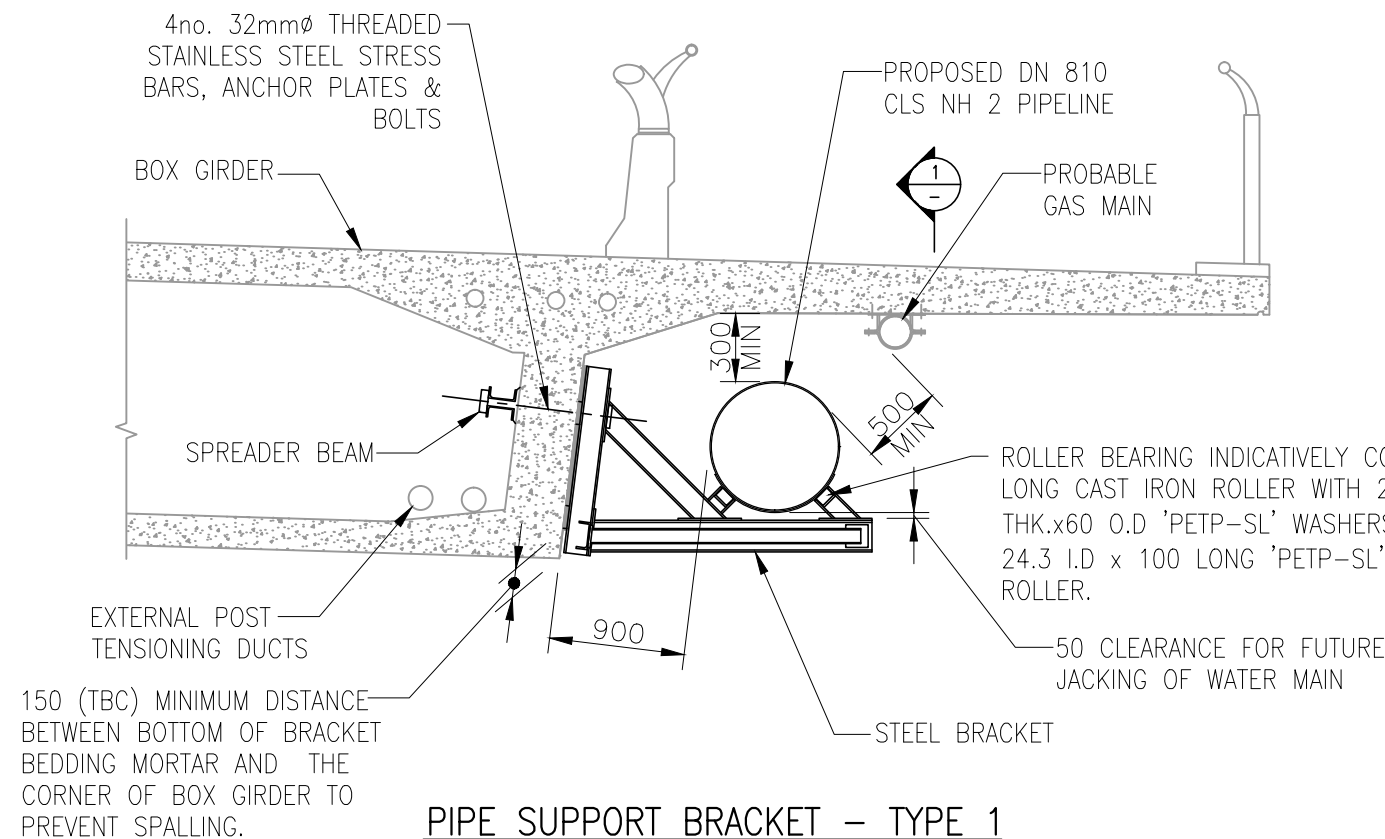
GREENHITHE BRIDGE WATERMAIN DUPLICATION
EROSION AND SEDIMENT CONTROL ARRANGEMENT
STABILISED ENTRANCE AND SUPER SILT FENCE DETAIL

CAD FILE	2010674.040-044	DATE	01.07.15
ORIGINAL SCALE	A3	CONTRACT No.	-
N.T.S			
REF No.	-	ISSUE	-
DWG No.	2010674.043		2

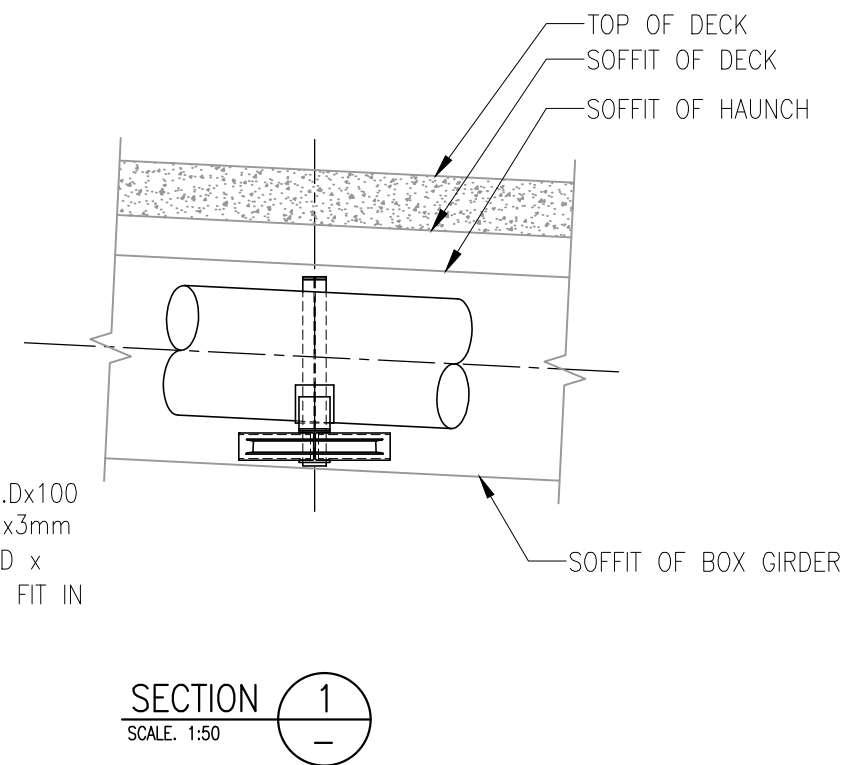


FOR CONSENT

					DESIGNED	P.K.	19.12.14	OPERATIONS	 Watercare <small>COPYRIGHT - This drawing, the design concept, remain the exclusive property of Watercare Services Limited and may not be used without approval. Copyright reserved.</small>	GREENHITHE BRIDGE WATERMAIN DUPLICATION EROSION AND SEDIMENT CONTROL ARRANGEMENT CATCHPIT PROTECTION, RUNOFF DIVERSION BUND AND CAUSEWAY WIDENING ARRANGEMENT	CAD FILE 2010674.040-044 DATE 01.07.15	
					DES. CHECKED	D.P.	19.12.14				ORIGINAL SCALE A3 N.T.S	CONTRACT No. -
3	01.07.15	ISSUED FOR CONSENT	A.T.S.	J.B.	DRAWN	P.K.	19.12.14				REF No. -	ISSUE -
2	23.03.15	ISSUED FOR CONSENT	P.K.	J.B.	DWG. CHECKED	D.P.	19.12.14					
1	19.12.14	ISSUED FOR CONSENT	P.K.	J.B.	PROJECT LEADER	J.B.	19.12.14	INFRASTRUCTURE			DWG No. 2010674.044	3
ISSUE	DATE	AMENDMENT	BY	APPD.	INFRASTR APP'D							



PIPE SUPPORT BRACKET – TYPE 1
SCALE: 1:50 (A3)

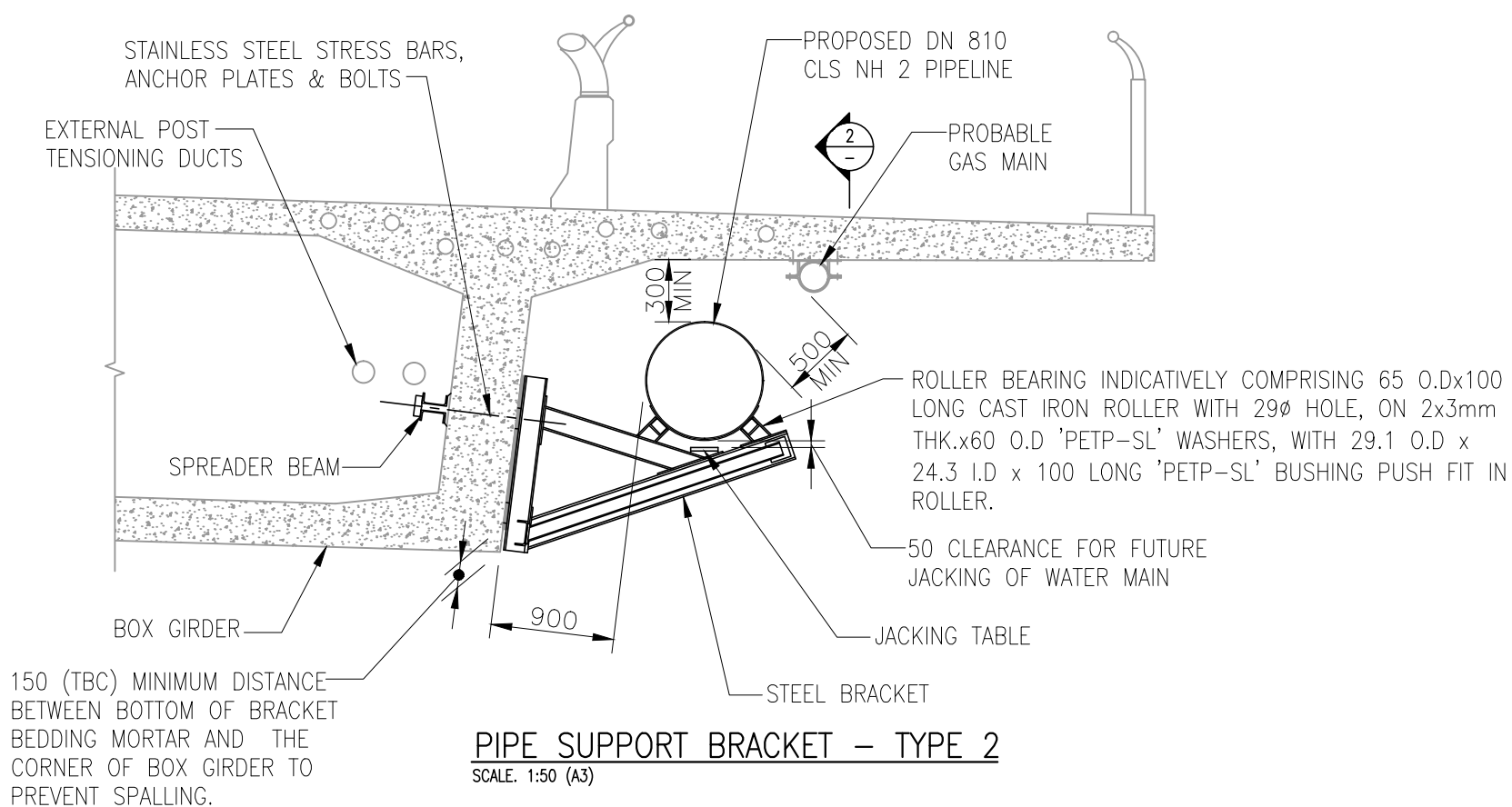


SECTION 1
SCALE: 1:50

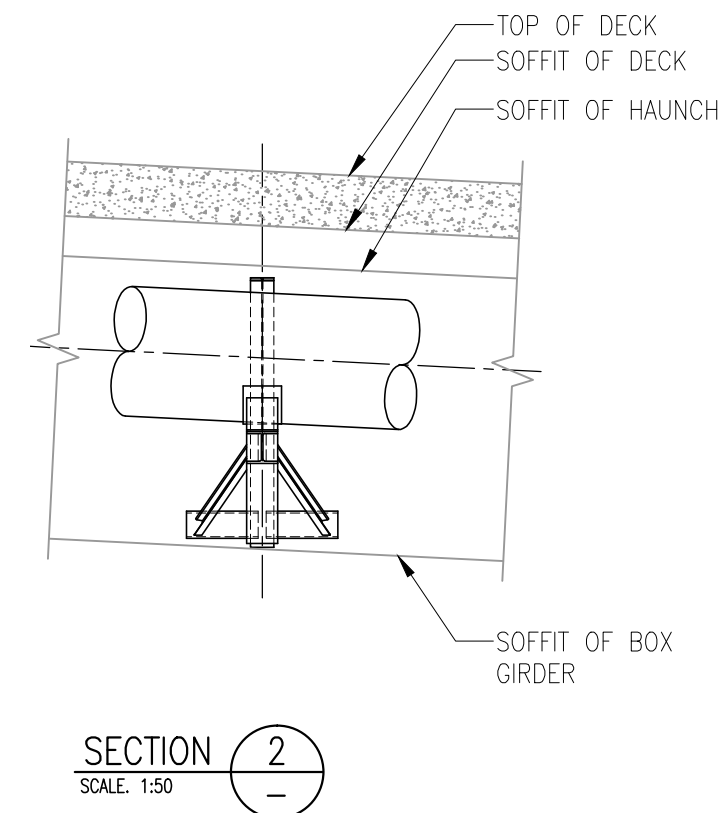
NOTES:

1. ALL DIMENSIONS ARE GIVEN IN MILLIMETRES, UNO.
2. BRACKETS ARE STRESSED ONTO EXISTING BOX GIRDER THROUGH WEB.
3. SUPPORT TO PIPE IS PROVIDED BY FRICTION BETWEEN BRACKETS AND BOX GIRDER
4. SPREADER BEAM WITH BOX GIRDER DISTRIBUTES BRACKET LOADING TO REDUCE ADDITIONAL STRESSES IN WEB TO ACCEPTABLE LEVELS.
5. STRESS BARS, ANCHORAGE NUTS & BEARING PLATES SHALL BE ATMS/UNS S32205 OR S31803.

NOTE:-
SITE LAYOUT AND DESIGNS INDICATIVE ONLY
AND SUBJECT TO CHANGE DURING DETAILED
DESIGN DEVELOPMENT



PIPE SUPPORT BRACKET – TYPE 2
SCALE: 1:50 (A3)



SECTION 2
SCALE: 1:50

FOR CONSENT

Plot Date: Jul 09, 2015 - 22:25pm \\uk-rs\cad\Jobs\2010675\01_DWG_Current\08_AEE\ 2010675.003.dwg

ISSUE	DATE	AMENDMENT	BY	APPD.
2	01.07.15	ISSUED FOR CONSENT	A.T.S.	M.A.E.
1	13.02.15	ISSUED FOR CONSENT	P.K.	M.A.E.

DESIGNED	P.E.	05-14
DES. CHECKED	-	05-14
DRAWN	L.K.	05-14
DWG. CHECKED	-	05-14
PROJECT LEADER	-	05-14
INFRASTR'R APP'D	-	05-14

OPERATIONS
INFRASTRUCTURE



**GREENHITHE BRIDGE WATERMAIN DUPLICATION AND CAUSEWAY
STRUCTURAL DESIGN**
PIPE SUPPORT BRACKETS – DETAILS

CAD FILE	2010675.003	DATE	01.07.15
ORIGINAL SCALE	A3	CONTRACT No.	-
REF No.	-	ISSUE	-
DWG No.	2010675.003		2



KEY

- 1. Opportunity for potential future connection with Hobsonville Coastal Linear Park (by others).
- 2. Concrete termination point with enough room for a single flatbed truck to turn around (a 3-point turn is acceptable).
- 3. Screening for pipe transition to bridge
- 4. Basalt rocks 'pulled' over riprap crest in sections along causeway to soften edge.
- 5. Area for wooden pillars for bird roosting.
- 6. 3m wide maintenance access path.
- 7. Existing 3m wide pedestrian/cycle path.
- 8. Potential location for future public art sculpture (by others).
- 9. Viewing area towards Herald Island and Greenhithe. Hoggin surface. Seating.
- 10. Low earth bunds (1000 - 1500mm high).
- 11. Grassed open area.
- 12. Rip-rap rock revetement.
- 13. Area of 'sacrificial' planting able to be removed (and replaced) to enable construction of future phases of the Northern Interceptor. Species and location to be determined.
- 14. 1m wide planting to extend over the crest of the length of causeway.
- 15. Existing NZTA noise wall
- 16. Existing road and primary site access
- 17. Fill area (shown hatched) to raise ground level and adjoin the esplanade of the neighbouring lot for potential future coastal path.
- 18. Potential future connection to pedestrian/cycle path along neighbouring esplanade reserves.
- 19. Trees to be removed for construction access (shown in dotted line). Reinstated with grass or planting following completion.
- 20. Raised shell bank.
- 21. Low stature vegetation or substrate (planted with *Phormium cookianum* or similar species)
- 22. Protective wire fence (600-900mm high) for dog exclusion.

LEGEND

- Potential location of biofilters, located between shell bank and low planting.
- NI pipeline phase 1 infrastructure (beneath ground)
- Indicative location of pipe transition structure to Greenhithe Bridge (above ground).
- Associated Infrastructure (beneath ground)
- Approximate project scope extent at western end (eastern extent not shown on plan).
- Sections of mass planting comprised of low height and low maintenance vegetation. Species and location to be determined.
- Pohutukawa Trees. Final locations to be determined.

CONSTRUCTION PLATFORM AREA (not to scale)

