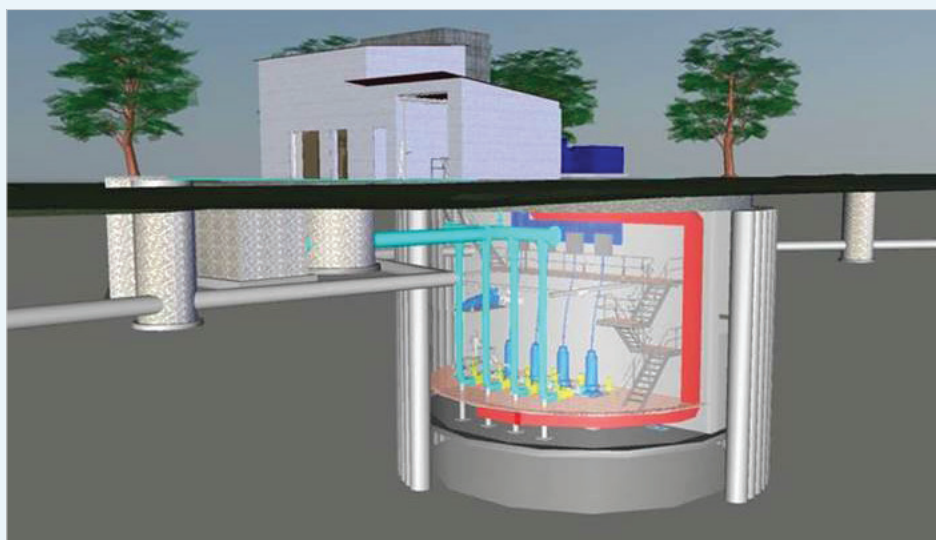


Mairangi Bay Wastewater Pump Station

Project overview

The current Sidmouth Street Wastewater Pump Station at Mairangi Bay has serviced the communities of the northern East Coast Bays since the early 1960s. The pump station is aging and no longer able to cope with population growth in the area and volumes of wastewater during wet weather events.

In 2015, as part of the Reserve Management Plan consultation, we presented a concept for a replacement pump station. Since then we have refined the design, better integrated the concept with the reserve and identified the trees to be protected during construction.



Proposed design for the new Mairangi Bay Wastewater Pump Station showing underground components.

What are the benefits?

- Reduced wastewater overflows and improved beach water quality
- Improved open space and integration with the reserve
- New technology to manage and treat odour helping to reduce the site footprint
- New building designed to integrate with and improve the visual appearance of the reserve.

How will the works affect you?

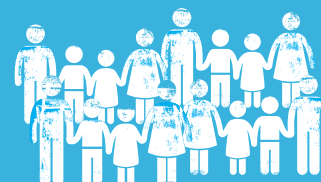
- Construction is expected to take up to 18 months - starting 2020
- Temporary traffic measures will be in place at the beach end of Sidmouth Street during construction of the underground tank section of the pump station which will be built under the road, and for a short time on Montrose Terrace during pipeline upgrades.
- Access to the southern end of the reserve around the existing pump station will be restricted during construction
- The works will generate some noise, vibration and traffic disruption which will be carefully managed in accordance with council plans and regulations
- We will be working to ensure access to the reserve and beach is maintained and any effects to residents and park users are minimised.

Fast facts

The new wastewater pump station will increase flow capacity from **340 to 625** litres per second



The new pump station will help support **population growth**



The new pump station will cost approximately **\$15 million**

Why is a new pump station needed?

Sidmouth Street Pump Station receives wastewater from properties between Long Bay and Castor Bay and pumps it over East Coast Road to Rosedale Wastewater Treatment Plant for treatment.

Due to an increase in population and wastewater, the current wastewater pump station is struggling to cope, particularly during heavy rainfall when diluted wastewater can overflow up to 10 times per year, approximately 70 metres out to sea at engineered points on either end of Mairangi Bay. The new pump station will include larger pumps as well as additional underground storage where wet weather flows are able to be temporarily held until they can be pumped into the network, virtually eliminating overflows.



Artist's impression of what the replacement Sidmouth Street Wastewater Pump Station could look like.

What happens next?

Watercare has been working with the Hibiscus and Bays Local Board, Auckland Council Parks and Auckland Transport to plan for the development and effects on the road and the reserve. The building will be architecturally designed and built to the east of the existing station which will continue to operate during construction. The old pump station will be demolished upon completion and the land where it is currently situated, returned back to the reserve.

Construction of the new underground pump station and storage will be partially situated under the road on Sidmouth Street but will not have long-term effects on the road or the reserve. Significant trees will be protected. A contractor will be engaged for the project, and then construction methodology will be confirmed.

Watercare has lodged a resource consent application for the new pumpstation and asked for it to be publicly notified.

Keeping you informed:

For up to date project information please visit our website at www.watercare.co.nz search 'Mairangi Bay'.

If you would like to receive notice of project updates please email 'sign me up' to MairangiBay@water.co.nz



Mairangi Bay Reserve.



Mairangi Bay beach.



Existing Sidmouth Street Wastewater Pump Station.