

MĀNGERE MATTERS



Put rubbish in the bin, not down the drain

Recently, one of our maintenance crews attended a call-out in your area. They found wastewater overflowing onto the street. Our crew worked quickly to find out what the problem was.

They discovered the public wastewater pipe was blocked with fat and rubbish, causing wastewater to overflow.

Blockages occur when local residents and businesses pour fat down the sink and flush rubbish such as rags down the toilet. These items don't break down. Instead, they form large clumps that block pipes and cause overflows.

These overflows can be harmful to you and your family's health. So, for the whole community, please think before you flush.

Turn the page to find out how you can help reduce local overflows.

Did you know?

We have a major construction project underway in your neighbourhood. Since August 2019, we have been building the Central Interceptor – a massive underground tunnel to carry wastewater to our treatment plant. Our tunnel boring machine (TBM), Hiwa-i-te-Rangi, will soon be passing under Ambury Park and then the Manukau Harbour. Her destination is Grey Lynn, 14.7 kilometres away.

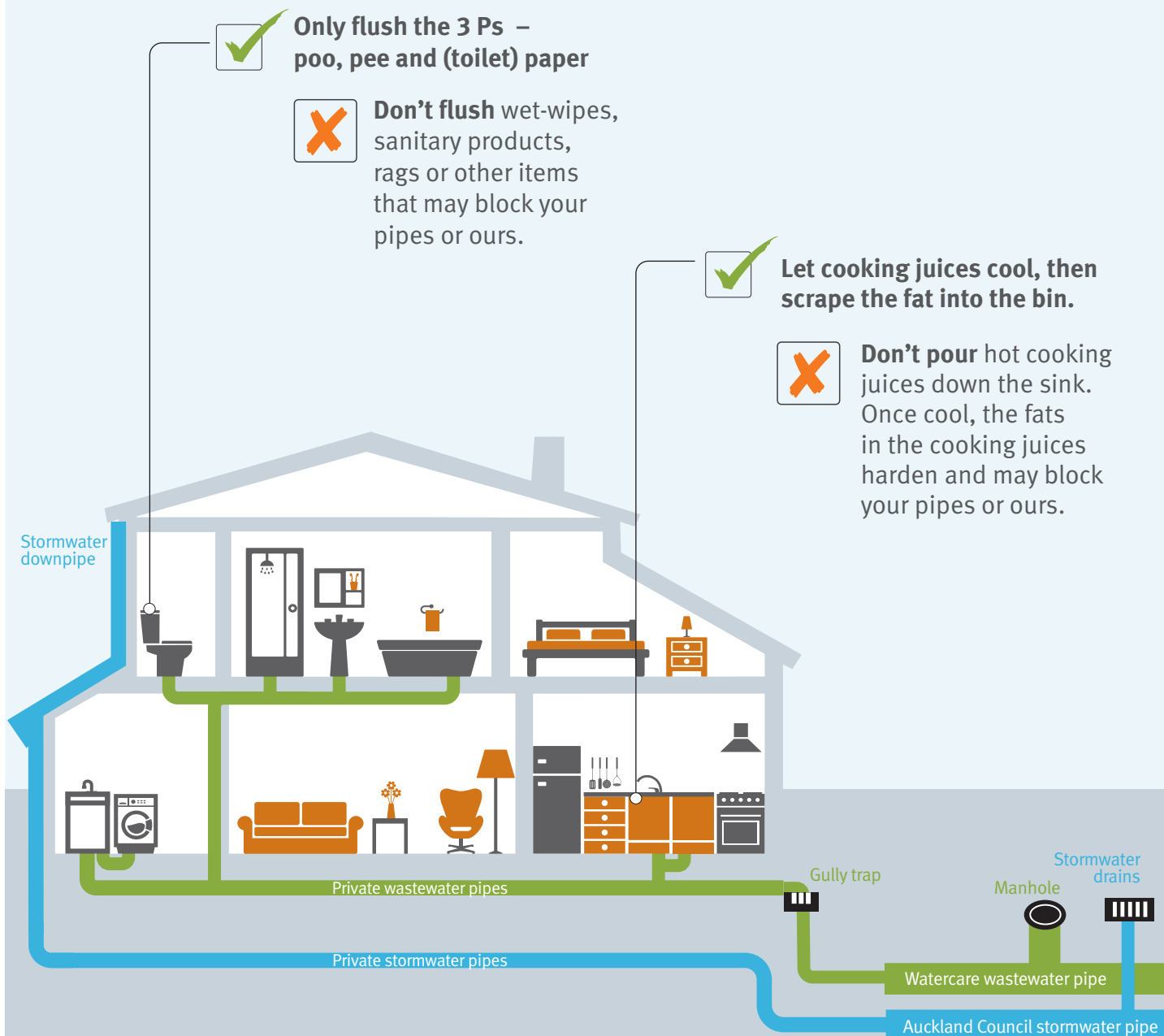
Once complete, the Central Interceptor will improve the health of our waterways and beaches by dramatically reducing wastewater overflows in central Auckland.

For more information visit www.centralinterceptor.co.nz

Help to reduce local overflows

Everything you put down the toilet, shower or sink goes into the wastewater pipes right under your feet. It then leaves your property and goes into the local network.

If you put fats, oils or grease down the sink or flush rubbish down the toilet, there is a good chance this could cause a blockage in your neighbourhood. A blockage can lead to a nasty overflow at your place, your neighbours, or your friends down the road.



Contact us If you would like to provide your feedback on *Māngere Matters*, please email communications@water.co.nz